

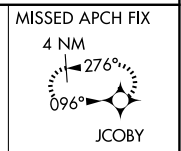
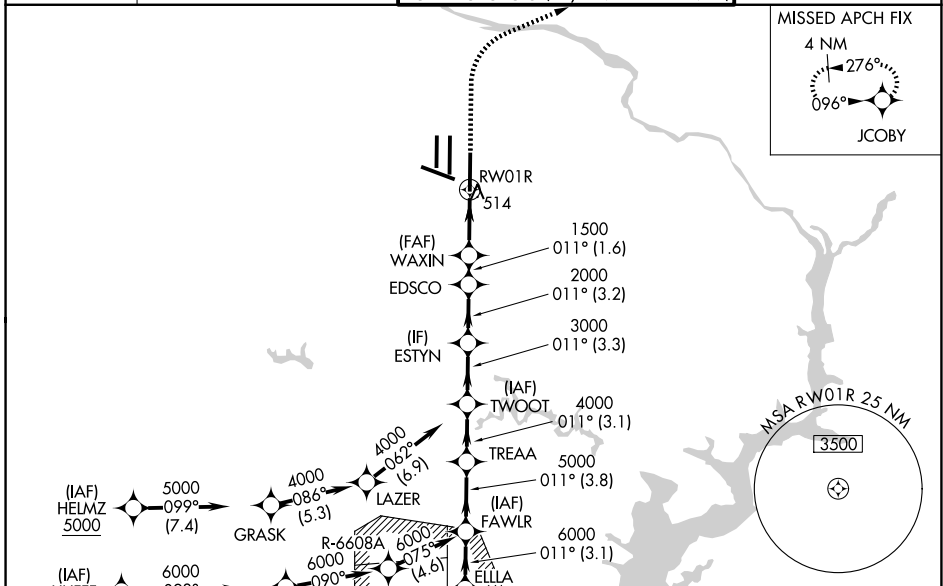
WAAS CH <b>56409</b> W01A	APP CRS <b>011°</b>	Rwy Ldg <b>11500</b> TDZE <b>312</b> Apt Elev <b>312</b>
---------------------------------	------------------------	--

# RNAV (GPS) Y RWY 1R

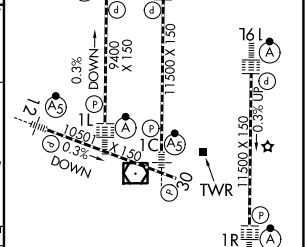
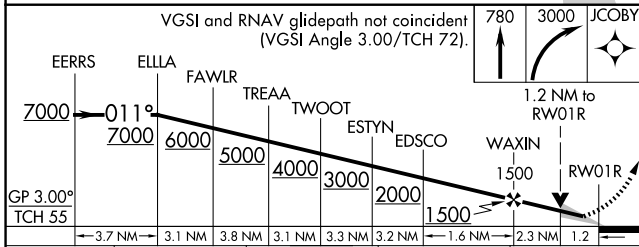
WASHINGTON DULLES INTL (IAD)

RNP APCH - GPS.	ALSF-2	MISSED APPROACH: Climb to 780, then climbing right turn to 3000 direct JCOBY and hold.
<p><b>▼</b> For uncompensated Baro-VNAV systems, LNAV/VNAV NA below -13°C or above 54°C.</p> <p><b>▲</b> Simultaneous approach authorized. LNAV procedure NA during simultaneous operations. Use of FD or AP required during simultaneous operations. For inop ALS, increase LNAV/VNAV all Cats visibility to RVR 6000 and LNAV Cat C/D visibility to 1/2 SM.</p>		

D-ATIS <b>134.85</b>	POTOMAC APP CON <b>120.45 306.925</b> (241°-330°) <b>128.525 306.925</b> (091°-240°) <b>126.1 338.25</b> (331°-090°)	DULLES TOWER <b>120.1 317.8</b> (Rwys 1R/19L) <b>120.25 348.6</b> (Rwys 1C/19C) <b>134.425 348.6</b> (Rwys 1L/19R and 12/30)	GND CON <b>121.9 317.8</b> (EAST) <b>121.625 348.6</b> (WEST)
-------------------------	---	---	---



ELEV 312	<b>D</b>	TDZE 312
----------	----------	----------



GP 3.00° TCH 55	3.7 NM	3.1 NM	3.8 NM	3.1 NM	3.3 NM	3.2 NM	1.6 NM	2.3 NM	1.2
CATEGORY	A		B		C		D		
LPV DA	512/18		200 (200-1/2)						
LNAV/VNAV DA	728/40		416 (500-3/4)						
LNAV MDA	780/24		468 (500-1/2)		780/50		468 (500-1)		
CIRCLING	940-1		628 (700-1)		940-1 3/4		1180-2 3/4		
					628 (700-1 3/4)		868 (900-2 3/4)		

TDZL/RCLS Rwys 1C, 1L, 1R, 12, 19C and 19R  
REIL Rwy 30  
HIRL all rwys

NE-3, 16 APR 2026 to 14 MAY 2026

NE-3, 16 APR 2026 to 14 MAY 2026