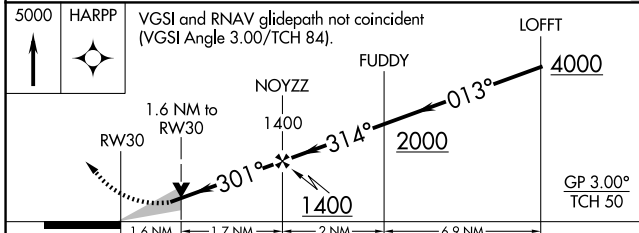
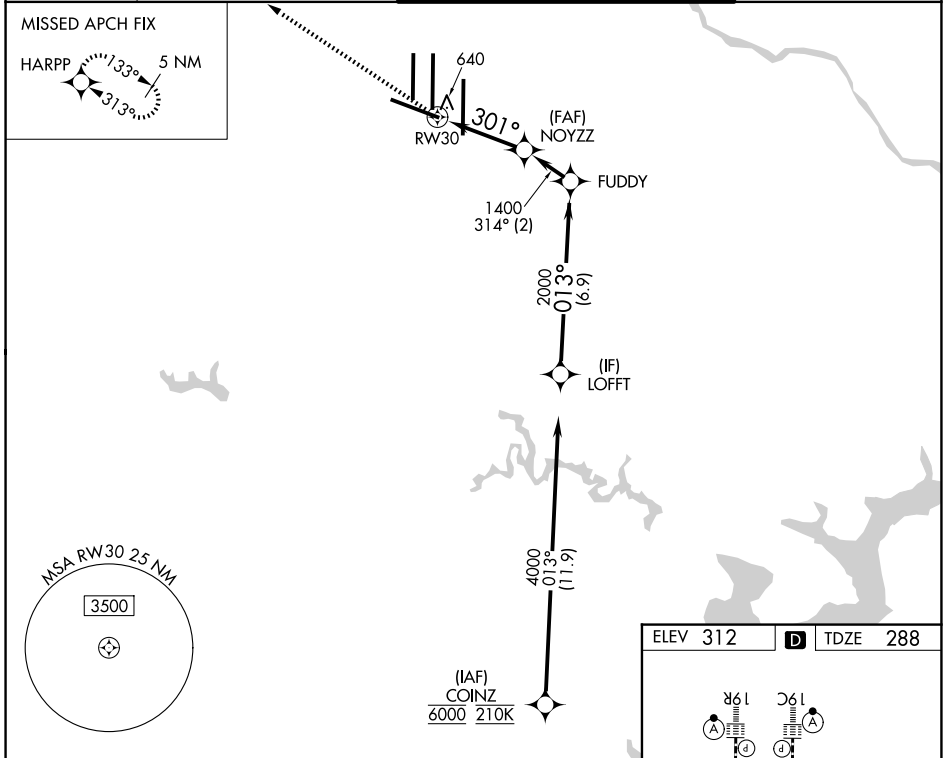


APP CRS	Rwy Ldg <b>10501</b>
<b>301°</b>	TDZE <b>288</b>
	Apt Elev <b>312</b>

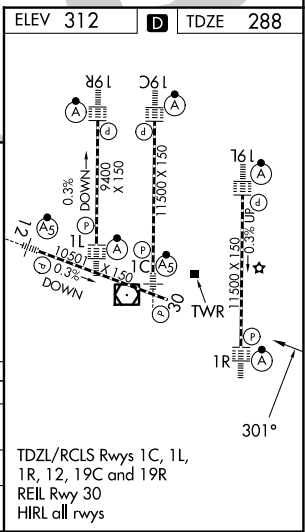
# RNAV (GPS) Y RWY 30

WASHINGTON DULLES INTL (IAD)

RNP APCH - GPS.		DULLES TOWER <b>120.1 317.8</b> (Rwy 1R/19L) <b>120.25 348.6</b> (Rwy 1C/19C) <b>134.425 348.6</b> (Rwys 1L/19R and 12/30)		GND CON <b>121.9 317.8</b> (EAST) <b>121.625 348.6</b> (WEST)	
<p>▼ For uncompensated Baro-VNAV systems, LNAV/VNAV NA below -1.3°C or above 54°C.</p>		MISSED APPROACH: Climb to 5000 direct HARPP and hold.			
D-ATIS <b>134.85</b>	POTOMAC APP CON <b>120.45 306.925</b> (241°-330°) <b>128.525 306.925</b> (091°-240°) <b>126.1 338.25</b> (331°-090°)				



5000 HARPP	VGS1 and RNAV glidepath not coincident (VGS1 Angle 3.00/TCH 84).			
LOFFT	4000			
NOYZZ	FUDDY			
1400	2000			
1400	GP 3.00° TCH 50			
CATEGORY	A	B	C	D
LNAV/VNAV DA	801-1 <sup>3</sup> / <sub>8</sub>		513 (500-1 <sup>3</sup> / <sub>8</sub> )	
LNAV MDA	900/55	612 (600-1)	900-1 <sup>3</sup> / <sub>4</sub>	612 (600-1 <sup>3</sup> / <sub>4</sub> )
CIRCLING	940-1	628 (700-1)	940-1 <sup>3</sup> / <sub>4</sub> 628 (700-1 <sup>3</sup> / <sub>4</sub> )	1180-2 <sup>3</sup> / <sub>4</sub> 868 (900-2 <sup>3</sup> / <sub>4</sub> )



NE-3, 16 APR 2026 to 14 MAY 2026

NE-3, 16 APR 2026 to 14 MAY 2026