


LOC I-GVK 111.7	APP CRS 015°	Rwy Ldg 7571
		TDZE 754
		Apt Elev 759

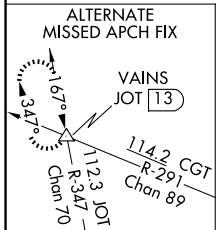
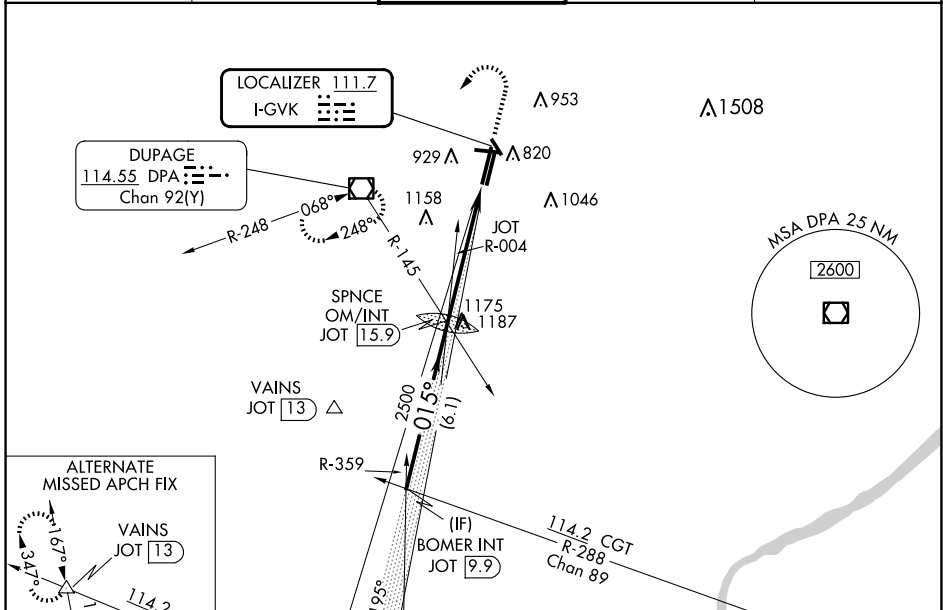
ILS or LOC RWY 2L

DUPAGE (DPA)

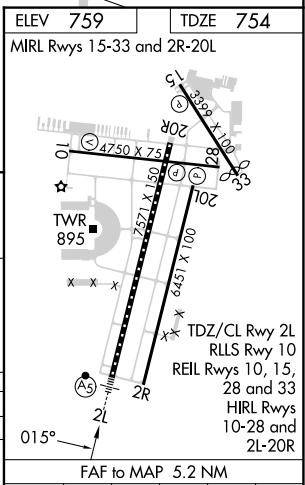
⚠ Circling Rwy 15, 28, 33 NA at night. When local altimeter setting not received, use Aurora altimeter setting and increase all DA 37 feet and all MDA 40 feet. For inop ALS, increase S-LOC 2L Cat C/D visibility to 2 SM. For inop ALS when using Aurora altimeter setting, increase S-LOC 2L Cat C/D visibility to 2½ SM.


MALSR

MISSED APPROACH: Climb to 1200 then climbing left turn to 3000 direct DPA VOR/DME and hold, continue climb-in-hold to 3000.

ATIS 132.075	CHICAGO APP CON 133.5 349.0	DUPAGE TOWER 120.9 257.8	GND CON 121.8	CLNC DEL 119.75
------------------------	---------------------------------------	------------------------------------	-------------------------	---------------------------



ELEV 759	TDZE 754
MIRL Rwy 15-33 and 2R-20L	



JOT VOR/DME	BOMER INT JOT 9.9	SPNCE OM/INT JOT 15.9	1200	3000	DPA
3000	359°	015°	2472		
GS 3.00° TCH 50	3000	2500			
9.9 NM	6.1 NM	5.2 NM			
CATEGORY	A	B	C	D	
S-ILS 2L	954-½ 200 (200-½)				
S-LOC 2L	1500-½ 746 (800-½)	1500-¾ 746 (800-¾)	1500-1¾ 746 (800-1¾)	746 (800-1¾)	
C CIRCLING	1500-1 741 (800-1)	1500-1¼ 741 (800-1¼)	1500-2¼ 741 (800-2¼)	1500-2½ 741 (800-2½)	

EC-3, 16 APR 2026 to 14 MAY 2026

EC-3, 16 APR 2026 to 14 MAY 2026