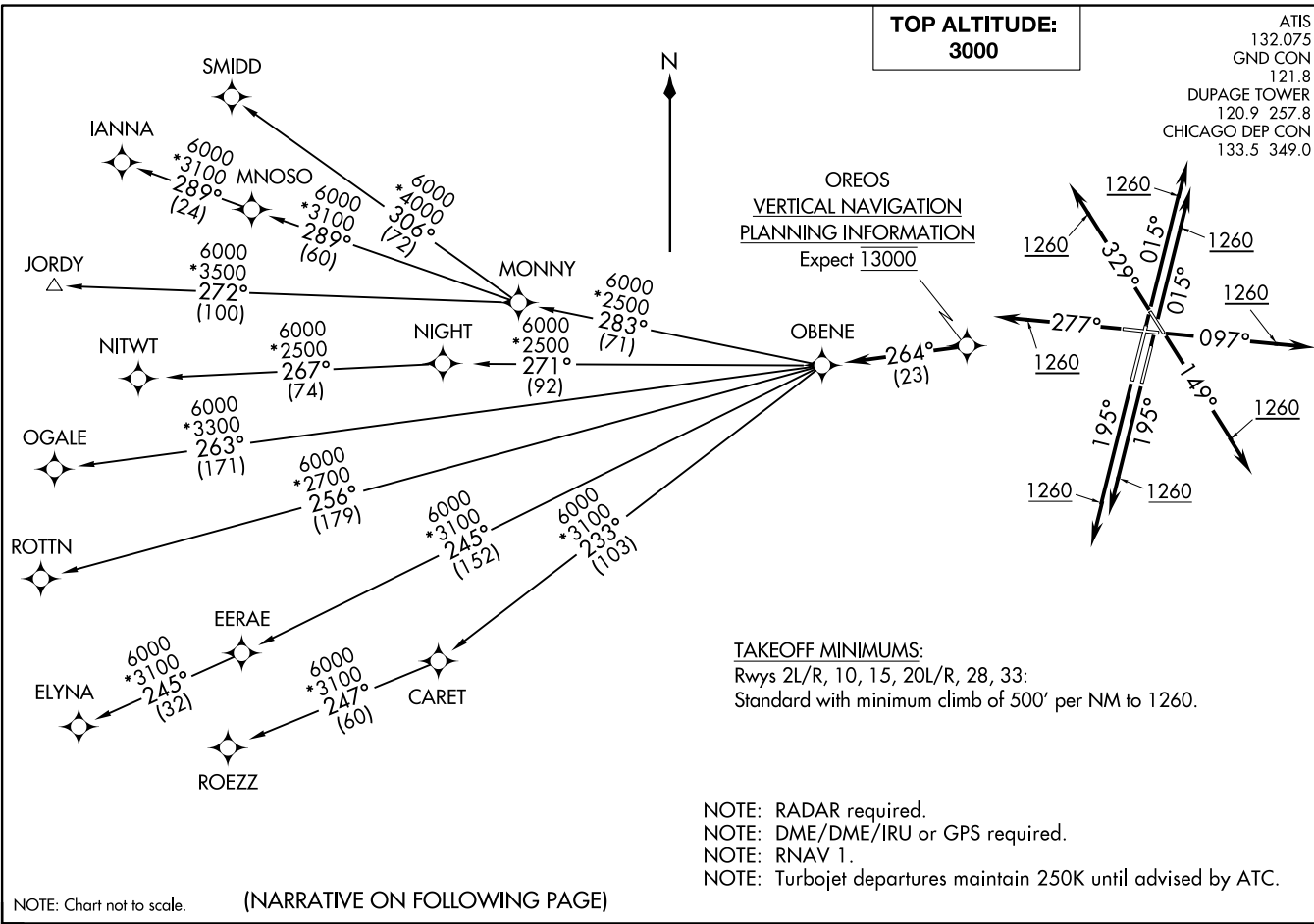


OBENE THREE DEPARTURE (RNAV)
(OBENE3,OBENE) 08NOV18

CHICAGO/WEST CHICAGO, ILLINOIS
DUPAGE (DPA)



(OBENE3,OBENE) 18312
OBENE THREE DEPARTURE (RNAV)
AL-5104 (FAA)

CHICAGO/WEST CHICAGO, ILLINOIS
DUPAGE (DPA)

(NARRATIVE ON FOLLOWING PAGE)

NOTE: Chart not to scale.



DEPARTURE ROUTE DESCRIPTION

TAKEOFF RUNWAYS 2L/R: Climb heading 015° to 1260, then continue climb on 015° heading or as assigned by ATC, for vectors to OREOS. Thence

TAKEOFF RUNWAY 10: Climb heading 097° to 1260, then continue climb on 097° heading or as assigned by ATC, for vectors to OREOS. Thence

TAKEOFF RUNWAY 15: Climb heading 149° to 1260, then continue climb on 149° heading or as assigned by ATC, for vectors to OREOS. Thence

TAKEOFF RUNWAYS 20L/R: Climb heading 195° to 1260, then continue climb on 195° heading or as assigned by ATC, for vectors to OREOS. Thence

TAKEOFF RUNWAY 28: Climb heading 277° to 1260, then continue climb on 277° heading or as assigned by ATC, for vectors to OREOS. Thence

TAKEOFF RUNWAY 33: Climb heading 329° to 1260, then continue climb on 329° heading or as assigned by ATC, for vectors to OREOS. Thence

. . . . on depicted route to OBENE, maintain 3000. Expect filed altitude 10 minutes after departure.

ELYNA TRANSITION (OBENE3.ELYNA)

IANNA TRANSITION (OBENE3.IANNA)

JORDY TRANSITION (OBENE3.JORDY)

MNOSO TRANSITION (OBENE3.MNOSO): For Minneapolis terminal area arrivals or assigned by ATC.

NITWT TRANSITION (OBENE3.NITWT)

OGALE TRANSITION (OBENE3.OGALE)

ROTTN TRANSITION (OBENE3.ROTTN)

ROEZZ TRANSITION (OBENE3.ROEZZ)

SMIDD TRANSITION (OBENE3.SMIDD)

EC-3, 16 APR 2026 to 14 MAY 2026

EC-3, 16 APR 2026 to 14 MAY 2026