

WAAS CH 69204 W33A	APP CRS 336°	Rwy Ldg 5950 TDZE 4316 Apt Elev 4317
--	------------------------	---

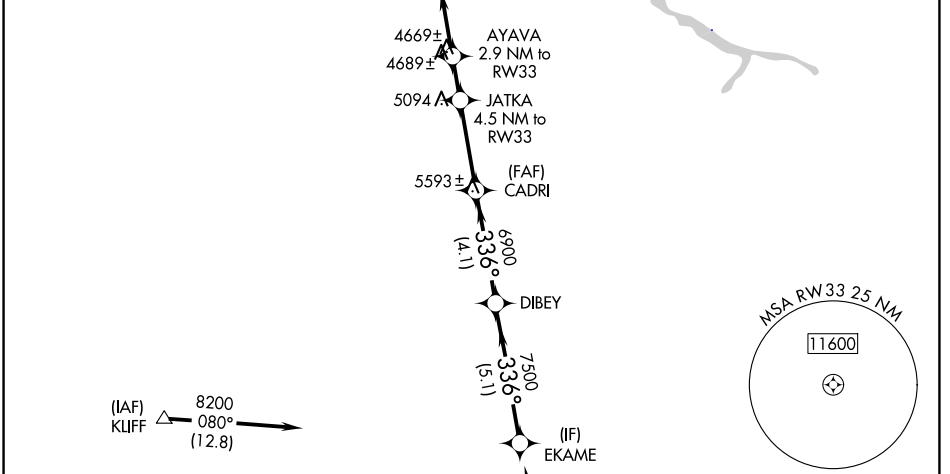
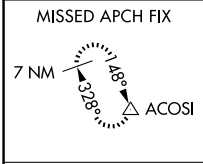
RNAV (GPS) RWY 33

PAGE MUNI (PGA)

▽ For uncompensated Baro-VNAV systems, LNAV/VNAV NA below -23°C (-9°F) or above 41°C (105°F).
DME/DME RNP-0.3 NA. Circling NA to Rwy 7-25.

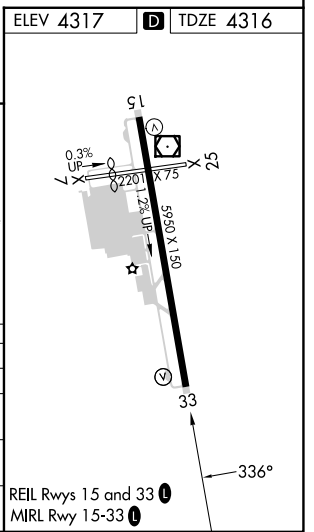
MISSED APPROACH: Climb to 8500 direct BIGNE and via 325° track to ACOSI and hold, continue climb-in-hold to 8500.

ASOS 120.625	DENVER CENTER 127.55 256.875	UNICOM 122.8 (CTAF) 0
------------------------	--	---------------------------------



Procedure NA for arrivals at CELAY via V208 southbound.

8500	BIGNE	ACOSI	VGSI and RNAV glidepath not coincident (VGSI Angle 3.00/TCH 30).			EKAME
↑	325° tr	△	JATKA	CADRI	DIBEY	8200
*LNAV only.		AYAVA	5280	5800	6900	Procedure Turn NA
*1.8 NM to RW33		2.9 NM to RW33	4.5 NM to RW33			GP 3.00° TCH 50
1.8 NM	1.1 NM	1.6 NM	3.3 NM	4.1 NM	5.1 NM	
CATEGORY	A	B	C	D		
LPV DA	4566-1		250 (300-1)			
LNAV/VNAV DA	4744-1½		428 (500-1½)			
LNAV MDA	4920-1	604 (700-1)	4920-1¾	604 (700-1¾)	4920-2	604 (700-2)
CIRCLING	4920-1	603 (700-1)	5080-2¼	763 (800-2¼)	5360-3	1043 (1100-3)



SW-4, 16 APR 2026 to 14 MAY 2026

SW-4, 16 APR 2026 to 14 MAY 2026