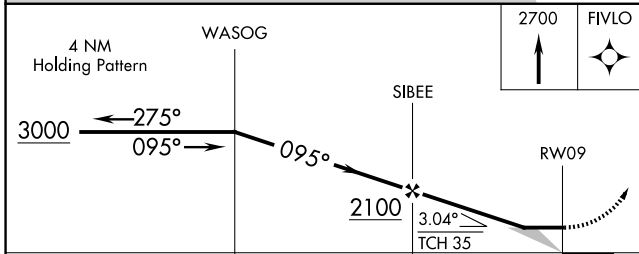
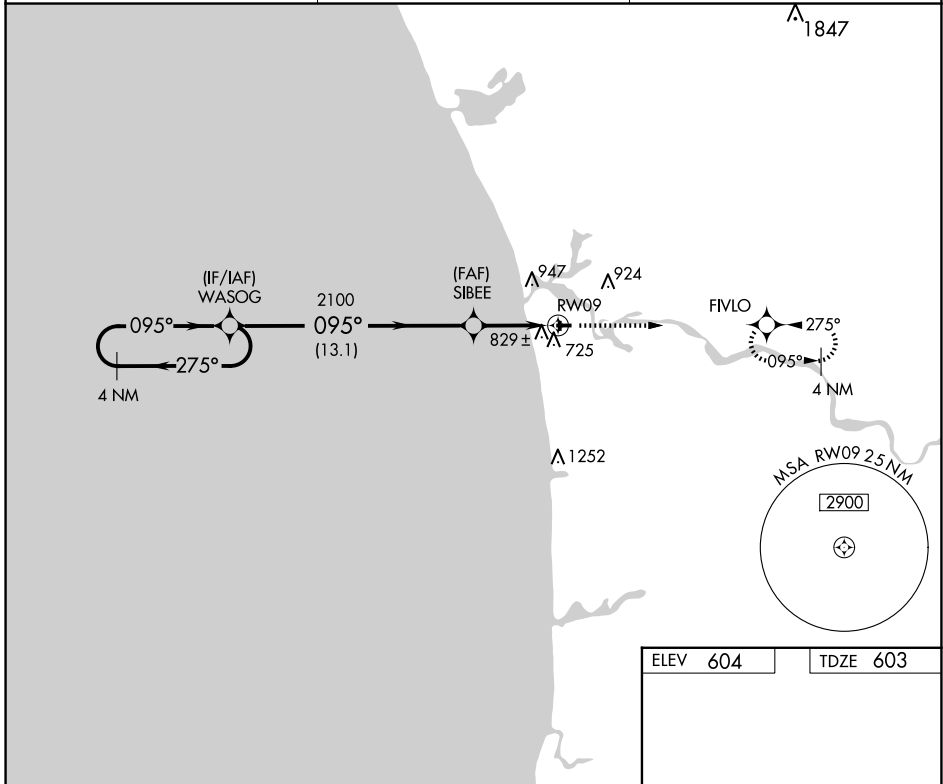


APP CRS 095°	Rwy Idg 3752
	TDZE 603
	Apt Elev 604

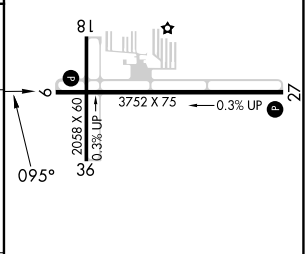
RNAV (GPS) RWY 9

GRAND HAVEN MEML AIRPARK (3GM)

RNP APCH. ▼ Use Muskegon altimeter setting. Circling Rwy 18, 36 NA at night. ▲ NA Rwy 9 helicopter visibility reduction below 3/4 SM NA.		MISSED APPROACH: Climb to 2700 direct FIVLO and hold.
MKG ASOS 124.3	GREAT LAKES APP CON* 133.825 290.35	UNICOM 122.7 (CTAF) 0



ELEV 604	TDZE 603
----------	----------



CATEGORY	A	B	C	D
LNNAV MDA	1140-1	537 (600-1)	1140-1½ 537 (600-1½)	NA
CIRCLING	1240-1	636 (700-1)	1320-2 716 (800-2)	NA

REIL Rwy 9 and 27
MIRL Rwy 9-27 and 18-36

EC-1, 16 APR 2026 to 14 MAY 2026

EC-1, 16 APR 2026 to 14 MAY 2026