

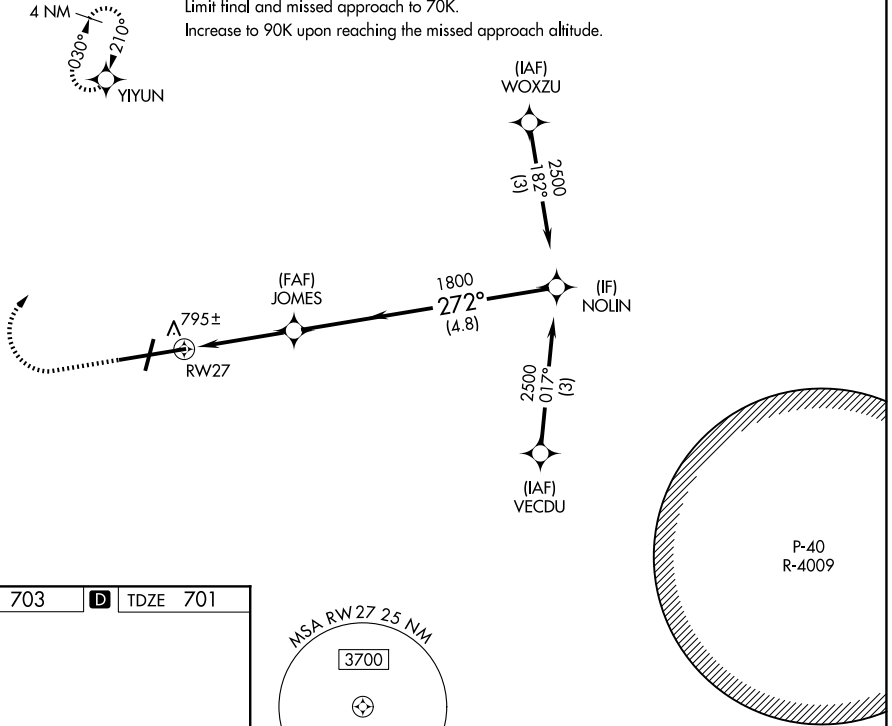
APP CRS	Rwy Ldg	<b>7000</b>
<b>272°</b>	TDZE	<b>701</b>
	Apt Elev	<b>703</b>

# COPTER RNAV (GPS) RWY 27

HAGERSTOWN RGNL/RICHARD A HENSON FLD (HGR)

<p><b>▼</b> Inop table does not apply. DME/DME RNP-0.3 NA. VDP NA with Martinsburg altimeter setting. When local altimeter setting not received, use Martinsburg altimeter setting and increase MDA 80 feet.</p>		<p>MALSR</p>	<p>MISSED APPROACH: Climb to 1200 then climbing right turn to 2500 direct YIYUN and hold.</p>	
ASOS	POTOMAC APP CON	HAGERSTOWN TOWER *	GND CON	UNICOM
<b>126.375</b>	<b>126.825 239.025</b>	<b>120.3 (CTAF) 0 225.4</b>	<b>120.8</b>	<b>122.95</b>

Limit initial and intermediate approach to 90K.  
 Limit final and missed approach to 70K.  
 Increase to 90K upon reaching the missed approach altitude.



NE-3, 16 APR 2026 to 14 MAY 2026

NE-3, 16 APR 2026 to 14 MAY 2026

ELEV 703	<b>D</b>	TDZE 701
----------	----------	----------

REIL Rwy 2 and 20  
 REIL Rwy 9  
 MIRL Rwy 2-20  
 HIRL Rwy 9-27

MSA RW27 25 NM  
 3700

1200	2500	YIYUN	VGSI and descent angles not coincident (VGSI Angle 3.00/TCH 55).
↑	↘	✧	∠ 4.98° HCH 55

CATEGORY	COPTER
LNAV MDA	1060-1/2 359 (400-1/2)