

RNAV (GPS) RWY 3

VERMILION RGNL (DNTV)

| | |
|------------------------|------------------------|
| APP CRS 030° | Rwy Ldg 6006 |
| | TDZE 674 |
| | Apt Elev 697 |

RNP APCH - GPS.

▼ Circling NA to Rwy 12 and 30.
▲ Rwy 3 helicopter visibility reduction below ¾ SM NA.

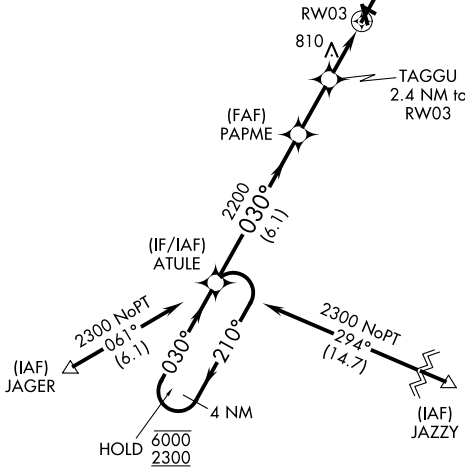
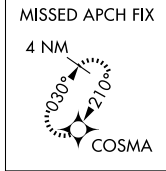
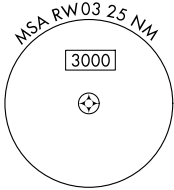
MISSED APPROACH: Climb to 2600 direct COSMA and hold.

AWOS-3
119.275

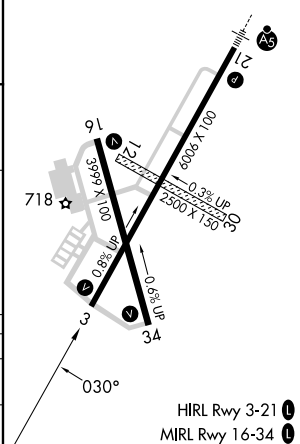
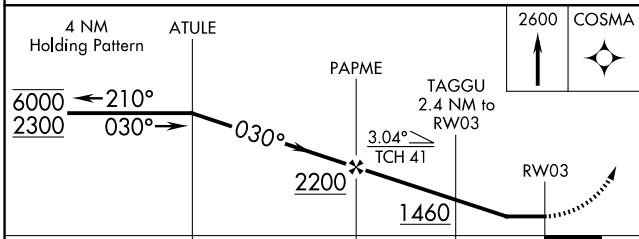
CHAMPAIGN APP CON ★
121.35 285.65

CLNC DEL
121.7

UNICOM
122.7 (CTAF) 0



| | |
|----------|----------|
| ELEV 697 | TDZE 674 |
|----------|----------|



| CATEGORY | A | B | C | D |
|----------|--------|-------------|-------------------------|-------------------------|
| LNAV MDA | 1120-1 | 446 (500-1) | 1120-1½ 446 (500-1½) | 1120-1½ 446 (500-1½) |
| CIRCLING | 1160-1 | 463 (500-1) | 1240-1½ 543 (600-1½) | 1340-2 643 (700-2) |

EC-3, 16 APR 2026 to 14 MAY 2026

EC-3, 16 APR 2026 to 14 MAY 2026