

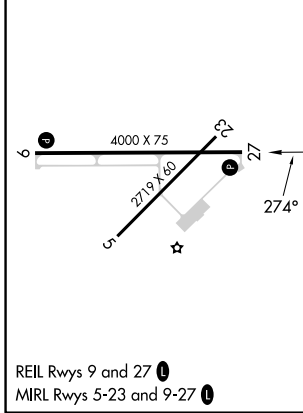
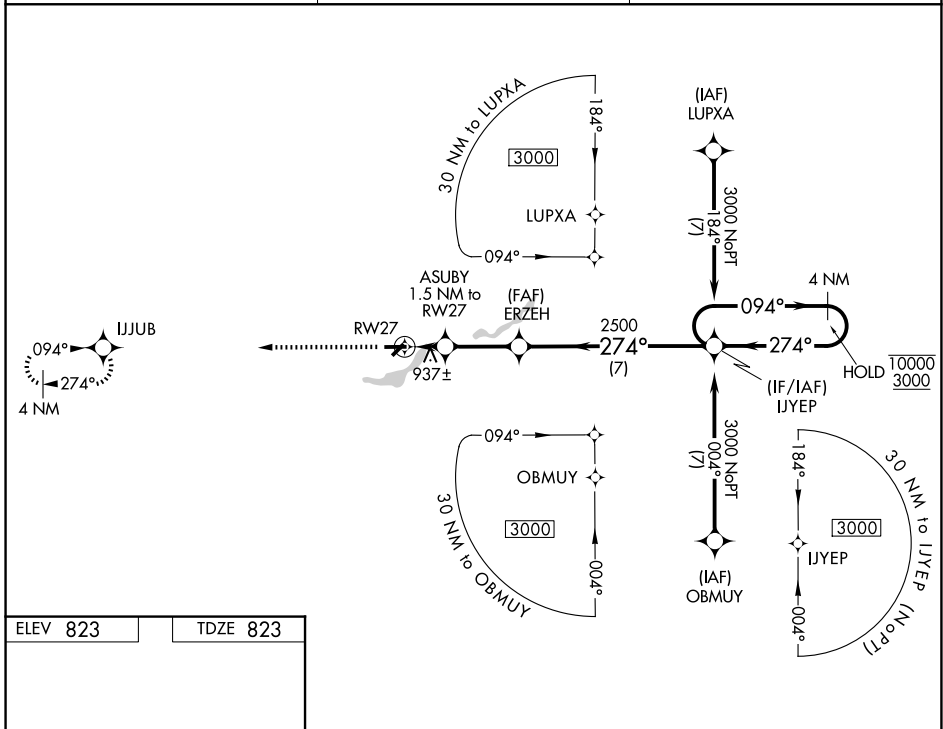
APP CRS <b>274°</b>	Rwy Ldg TDZE Apt Elev	<b>4000</b> <b>823</b> <b>823</b>
------------------------	-----------------------------	---

# RNAV (GPS) RWY 27

THREE RIVERS MUNI/DR HAINES (HAI)

RNP APCH - GPS.	<p><b>⚠</b> Procedure NA at night. Rwy 27 helicopter visibility reduction below 1 SM NA.  <b>⚠</b> When local altimeter setting not received, use SBN altimeter setting and increase all MDAs 100 feet and LNAV visibility Cat C <math>\frac{3}{8}</math> SM, and Circling visibility Cat C <math>\frac{1}{4}</math> SM.</p>	MISSED APPROACH: Climb to 3000 direct IJUB and hold.
-----------------	--	--

AWOS-3P <b>119.975</b>	GREAT LAKES APP CON ★ <b>121.2 239.25</b>	UNICOM <b>122.8</b> (CTAF) <b>📻</b>
---------------------------	--	--



3000	IJUB	VGSI and descent angles not coincident (VGSI Angle 4.00/TCH 34).	4 NM Holding Pattern	
↑	✦			
ERZEH	IJYEP	ASUBY 1.5 NM to RWY 27	274°	
2500	1440	3.77° TCH 34	274°	
1.5 NM	2.7 NM	7 NM		
CATEGORY	A	B	C	D
LNAV MDA	1200-1 377 (400-1)			NA
CIRCLING	1240-1 417 (500-1)	1420-1 597 (600-1)	1460-1 <sup>3</sup> / <sub>4</sub> 637 (700-1 <sup>3</sup> / <sub>4</sub> )	NA

EC-1, 16 APR 2026 to 14 MAY 2026

EC-1, 16 APR 2026 to 14 MAY 2026