

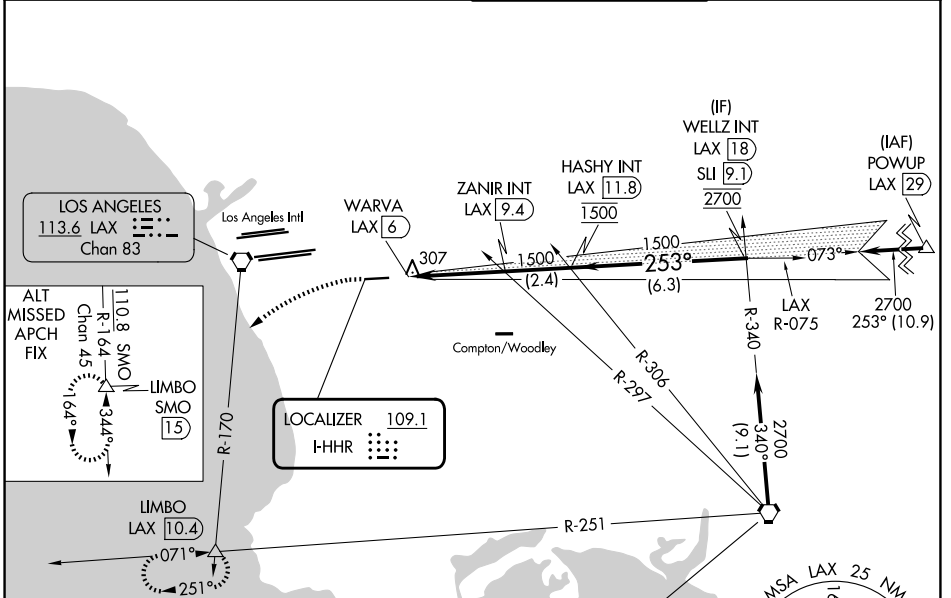
LOC I-HHR	APP CRS	Rwy Ldg	4194
<b>109.1</b>	<b>253°</b>	TDZE	63
		Apt Elev	66

# LOC RWY 25

JACK NORTHROP FLD/HAWTHORNE MUNI (HHR)

<p><b>⚠</b> Inop table does not apply. Rwy 25 helicopter visibility reduction below 1 SM NA. Circling Rwy 7 NA at night. When local altimeter setting not received, use Los Angeles Intl altimeter setting. Simultaneous approach authorized with LAX 25L/R 24L/R. Circling NA north of Rwy 7-25. DME from LAX VORTAC. Simultaneous reception of I-HHR and LAX DME required.</p>	<p>ODALS</p> <p>MISSED APPROACH: Climbing left turn to 3000 on heading 210° and LAX VORTAC R-170 to LIMBO INT/LAX 10.4 DME and hold.</p>
--	--

ATIS <b>118.4</b>	LOCAL APP CON <b>124.9 269.0</b>	HAWTHORNE TOWER* <b>121.1(CTAF) 0 257.8</b>	GND CON <b>125.1</b>
----------------------	-------------------------------------	--	-------------------------

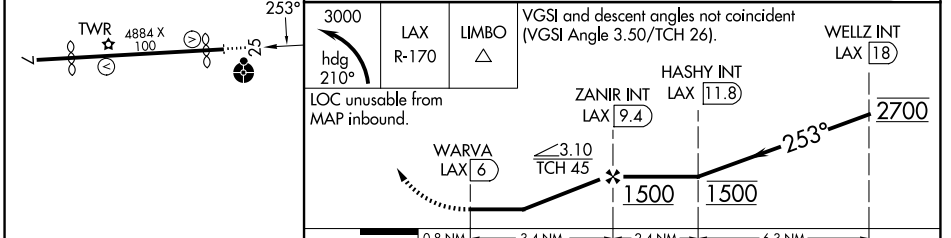


ELEV 66	<b>D</b>	TDZE 63
---------	----------	---------



IAF SEAL BEACH 115.7 SLI Chan 104

Procedure NA for arrivals at SLI VORTAC on V459-597 southeast bound.



MIRL Rwy 7-25	FAF to MAP 3.4 NM							
Knots	60	90	120	150	180			
Min:Sec	3:24	2:16	1:42	1:22	1:08			
CATEGORY	A		B		C		D	
S-25	580-1 517 (600-1)		580-1 $\frac{3}{8}$ 517 (600-1 $\frac{3}{8}$ )					
CIRCLING	620-1 554 (600-1)		780-2 714 (800-2)		780-2 $\frac{1}{4}$ 714 (800-2 $\frac{1}{4}$ )			

SW-3, 16 APR 2026 to 14 MAY 2026

SW-3, 16 APR 2026 to 14 MAY 2026