

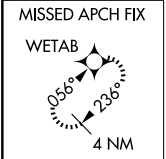
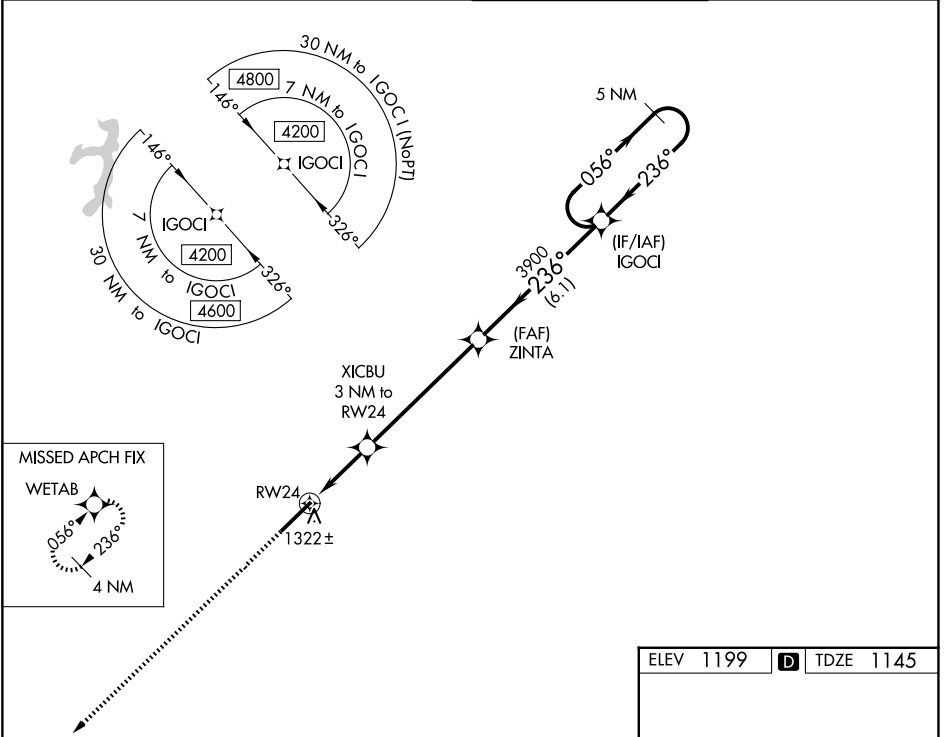
WAAS CH 70499 W24A	APP CRS 236°	Rwy Ldg TDZE 1145 Apt Elev 1199
--	------------------------	---

RNAV (GPS) RWY 24

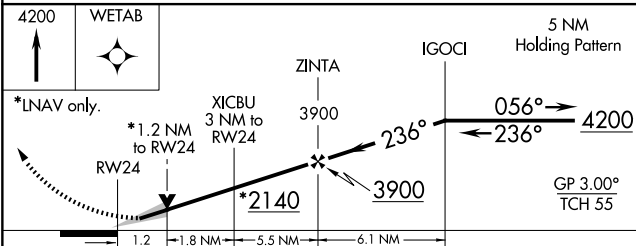
ARNOLD PALMER RGNL (L.B.E.)

For uncompensated Baro-VNAV systems, LNAV/VNAV NA below -17°C (2°F) or above 54°C (130°F). Circling NA southeast of Rwy 6-24. DME/DME RNP-0.3 NA.	MALSR 	MISSED APPROACH: Climb to 4200 direct WETAB and hold, continue climb-in-hold to 4200.

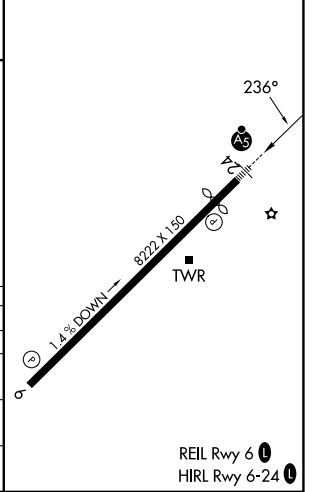
ATIS 118.375	JOHNSTOWN APP CON* 121.2 299.2	PALMER TOWER* 125.0 (CTAF) 0	GND CON 121.8
------------------------	--	--	-------------------------



ELEV 1199	D TDZE 1145
-----------	--------------------



CATEGORY	A	B	C	D
LPV DA		1345 - 1/2	200 (200-1/2)	
LNAV/VNAV DA		1498 - 3/4	353 (300-3/4)	
LNAV MDA	1580 - 1/2	435 (400-1/2)	1580 - 3/4	435 (400-3/4)
CIRCLING	1740 - 1 541 (600-1)	1780 - 1 581 (600-1)	2060 - 2 1/2 861 (900-2 1/2)	2060 - 2 3/4 861 (900-2 3/4)



NE-4, 16 APR 2026 to 14 MAY 2026

NE-4, 16 APR 2026 to 14 MAY 2026

REIL Rwy 6 **0**
HIRL Rwy 6-24 **0**