

SAN CLEMENTE ISLAND, CALIFORNIA

# HI-TACAN Z RWY 24

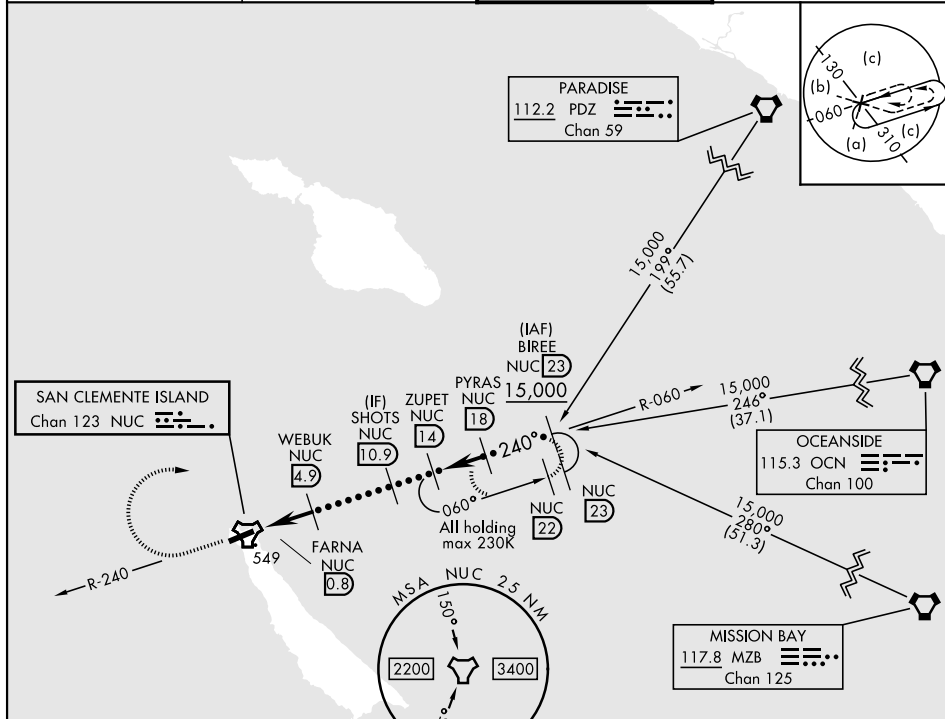
TACAN Chan <b>123</b>	NUC	APCH CRS <b>240°</b>	Rwy Idg TDZE Arprt Elev <b>9300</b> <b>184</b> <b>184</b>
--------------------------	-----	-------------------------	--

[USN]

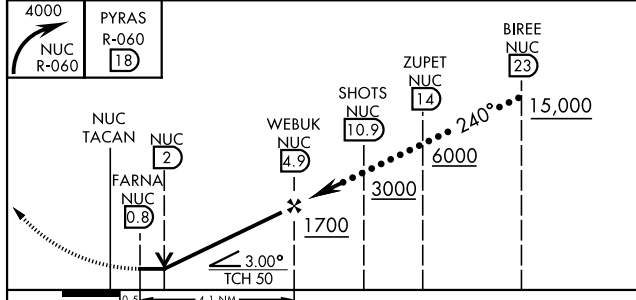
SAN CLEMENTE ISLAND HALF  
(FREDERICK SHERMAN FLD) (KNUC)

▼ \*Circling not authorized SE of Rwy 6-24. MISSED APPROACH: Climbing right turn to 4000 and intercept NUC TACAN R-060 to PYRAS and hold.

ATIS ★ <b>268.6</b>	APP CON <b>127.05 292.15</b>	TOWER ★ <b>126.75 278.8</b>	GND CON <b>119.55 251.05</b>
------------------------	---------------------------------	--------------------------------	---------------------------------

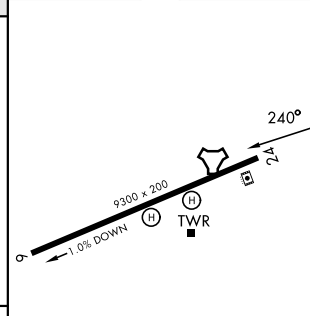


EMERG SAFE ALT 100 NM 12,300



ELEV	184	TDZE	184
------	-----	------	-----

CATEGORY	C	D	E
S-24	800-1¾	616 (700-1¾)	
CIRCLING*	800-1¾ 616 (700-1¾)	800-2 616 (700-2)	800-2¼ 616 (700-2¼)



REIL Rwy 6  
REIL Rwy 24  
HIRL Rwy 6-24

SAN CLEMENTE ISLAND, CALIFORNIA  
Amdt 1 16APR26

33°01'N-118°35'W

SAN CLEMENTE ISLAND HALF (KNUC)  
(FREDERICK SHERMAN FLD)

# HI-TACAN Z RWY 24

SW-3, 16 APR 2026 to 14 MAY 2026

SW-3, 16 APR 2026 to 14 MAY 2026