

SAN CLEMENTE ISLAND, CALIFORNIA

RNAV (GPS) RWY 24

WAAS CH 87812 W24A	APCH CRS 235°	Rwy ldg TDZE 184 Arprt Elev 184
---------------------------------	-------------------------	---

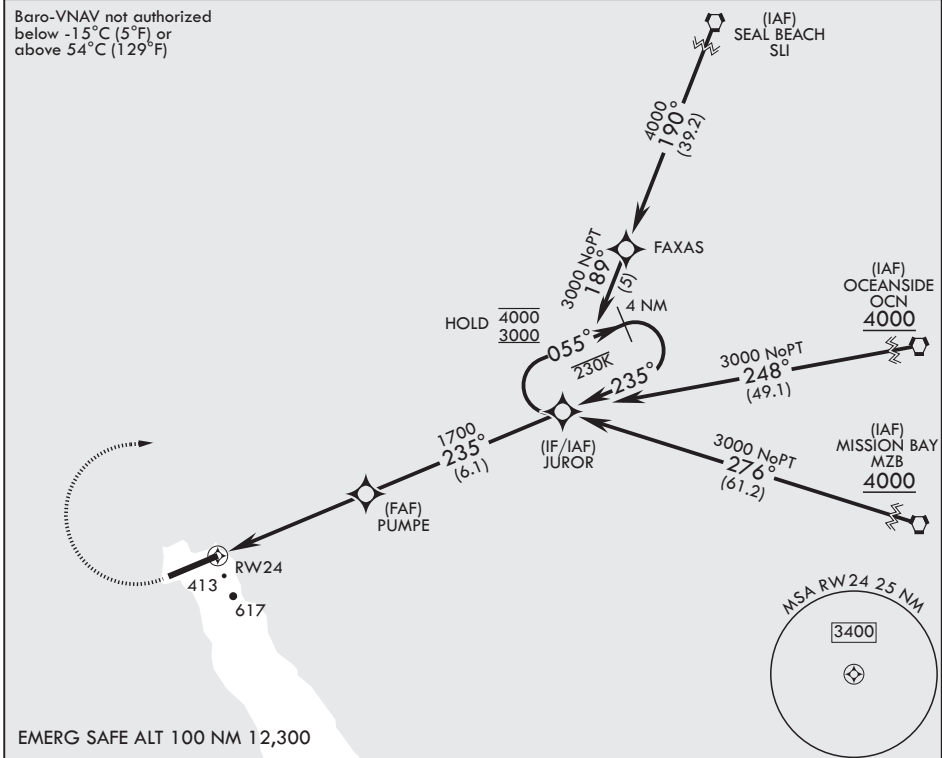
(USN)

SAN CLEMENTE ISLAND NALF (FREDERICK SHERMAN FLD) (KNUC)

RNP APCH-GPS	MISSED APPROACH: Climb to 800, then climbing right turn to 3000 direct JUROR and hold.
--------------	--

ATIS* 268.6	SAN CLEMENTE APP CON 127.05 292.15	TOWER* 126.75 278.8	GND CON 119.55 251.05
-----------------------	--	-------------------------------	---------------------------------

Baro-VNAV not authorized below -15°C (5°F) or above 54°C (129°F)



SW-3, 16 APR 2026 to 14 MAY 2026

SW-3, 16 APR 2026 to 14 MAY 2026

EMERG SAFE ALT 100 NM 12,300

800	3000	JUROR	ELEV 184	TDZE 184
crs 235°			JUROR Holding Pattern	
CATEGORY	A	B	C	D
LPV DA	384-3/4		200 (200-3/4)	
LNAV/VNAV DA	622-1 1/4 438 (500-1 1/4)	645-1 3/8 461 (500-1 3/8)	658-1 3/8 474 (500-1 3/8)	676-1 3/8 492 (500-1 3/8)
LNAV MDA	700-1	516 (600-1)	700-1 3/8	516 (600-1 3/8)
CIRCLING*	700-1	516 (600-1)	700-1 1/2 516 (600-1 1/2)	740-2 556 (600-2)
			HIRL all rwys REIL Rwy 6 REIL Rwy 24	

SAN CLEMENTE ISLAND, CALIFORNIA
Amdt 6 16APR26

SAN CLEMENTE ISLAND NALF (FREDERICK SHERMAN FLD) (KNUC)
33°01'N - 118°35'W

RNAV (GPS) RWY 24