

SAN CLEMENTE ISLAND, CALIFORNIA

TACAN Y RWY 24

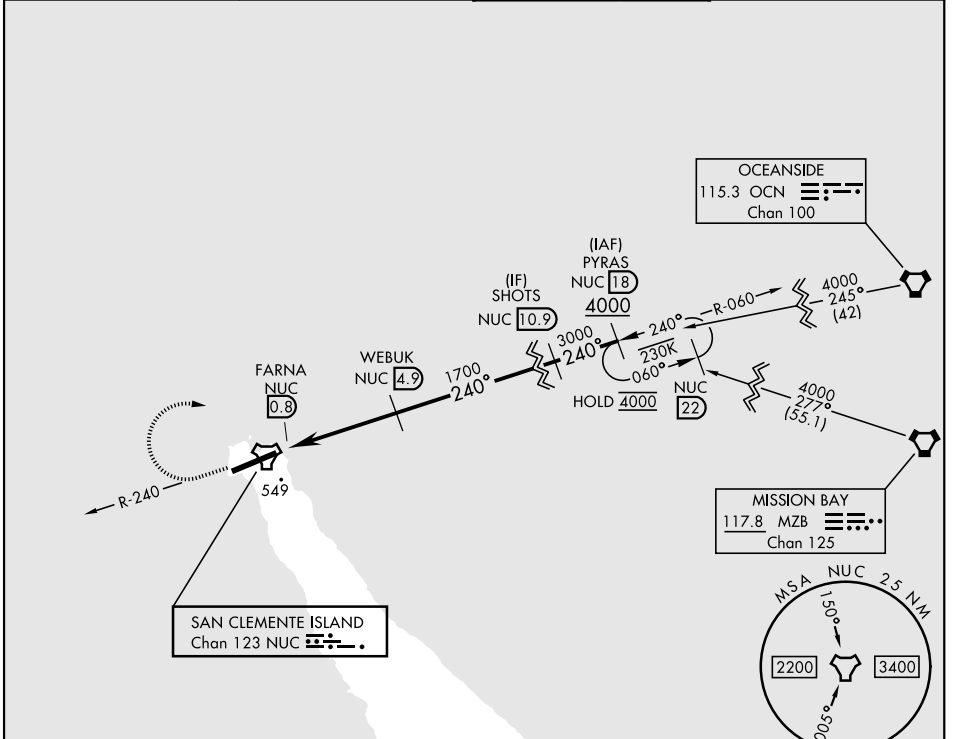
[USN]

SAN CLEMENTE ISLAND NALF (FREDERICK SHERMAN FLD) (KNUC)

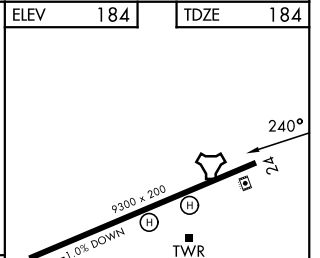
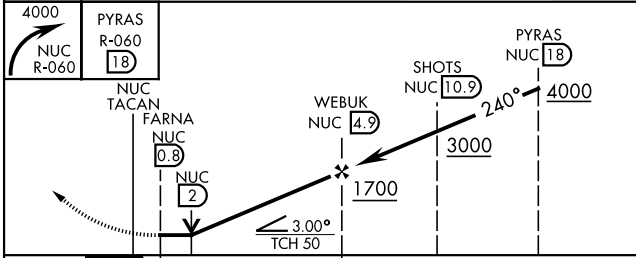
TACAN NUC Chan 123	APCH CRS 240°	Rwy Idg TDZE Arprt Elev 9300 184 184
------------------------------	-------------------------	--

▼ * Circling not authorized SE of Rwy 6-24. MISSED APPROACH: Climbing right turn to 4000 and intercept NUC TACAN R-060 to PYRAS and hold.

ATIS ★ 268.6	APP CON 127.05 292.15	TOWER ★ 126.75 278.8	GND CON 119.550 251.05
------------------------	---------------------------------	--------------------------------	----------------------------------



EMERG SAFE ALT 100 NM 12,300



CATEGORY	A	B	C	D	E
S-24	800-1 616 (700-1)		800-1¾ 616 (700-1¾)	800-2 616 (700-2)	800-2¼ 616 (700-2¼)
CIRCLING*	800-1 616 (700-1)		800-1¾ 616 (700-1¾)	800-2 616 (700-2)	800-2¼ 616 (700-2¼)

ELEV	184	TDZE	184
REIL Rwy 6		REIL Rwy 24	
HIRL Rwy 6-24			

SAN CLEMENTE ISLAND, CALIFORNIA
Amdt 1 16APR26

SAN CLEMENTE ISLAND NALF (FREDERICK SHERMAN FLD) (KNUC)
33°01'N-118°35'W

TACAN Y RWY 24

SW-3, 16 APR 2026 to 14 MAY 2026

SW-3, 16 APR 2026 to 14 MAY 2026