

WAAS CH <b>63139</b> <b>W11A</b>	APP CRS <b>111°</b>	Rwy Ldg TDZE Apt Elev	<b>4000</b> <b>775</b> <b>777</b>
--	------------------------	-----------------------------	---

# RNAV (GPS) RWY 11

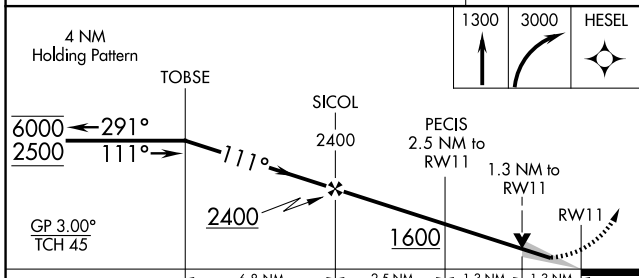
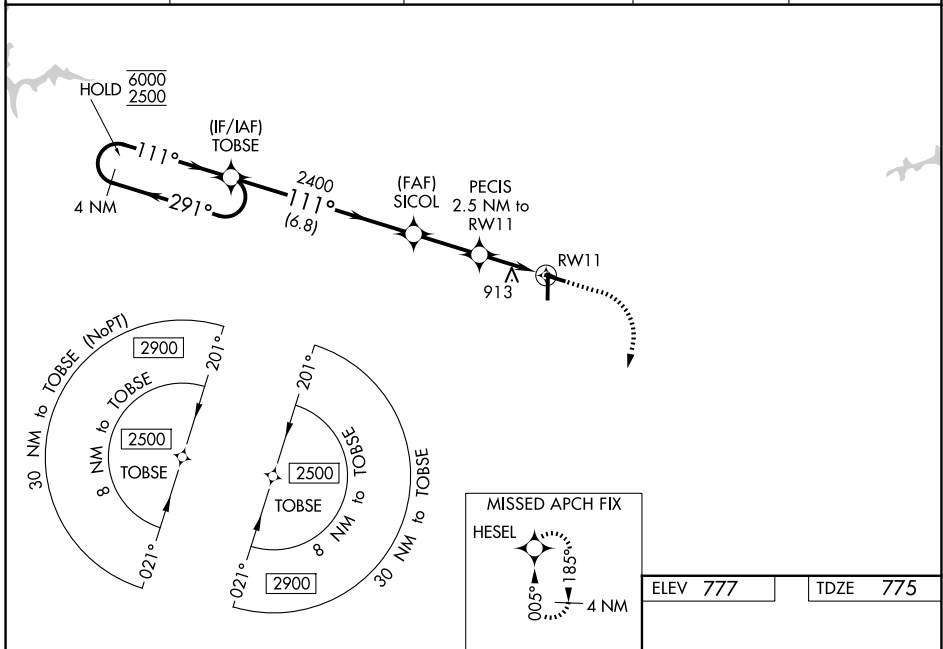
AUBURN UNIVERSITY RGNL (AUO)

RNP APCH - GPS.

**⚠** Baro-VNAV and VDP NA when using CSG altimeter setting. For uncompensated Baro-VNAV systems, LNAV/VNAV NA below -16°C or above 54°C. Circling Rwy 29 NA at night. When local altimeter setting not received, use CSG altimeter setting: increase LPV DA to 1139 feet; increase LNAV/VNAV DA to 1334 feet and all visibilities ¼ SM. Increase all MDAs 120 feet and LNAV visibility Cats C/D ¼ SM and Circling Cat C/D visibility ½ SM.

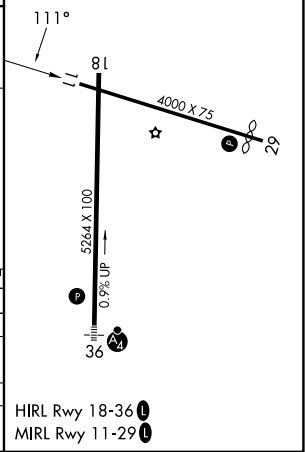
**MISSED APPROACH:**  
Climb to 3000 then climbing right turn to 3000 direct HESEL and hold.

AWOS-3PT <b>132.575</b>	ATLANTA APP CON ★ <b>125.5 323.1</b>	AUBURN TOWER ★ <b>123.875 (CTAF) 0</b>	GND CON ★ <b>121.625</b>	UNICOM <b>123.0</b>
----------------------------	---	---	-----------------------------	------------------------



ELEV 777	TDZE 775
----------	----------

CATEGORY	A	B	C	D
LPV DA	1025-1 250 (300-1)			
LNAV/VNAV DA	1220-1 3/4 445 (500-1 3/4)			
LNAV MDA	1220-1 445 (500-1) 1220-1 3/4 445 (500-1 3/4)			
CIRCLING	1280-1 503 (600-1)	1360-1 583 (600-1)	1380-1 3/4 603 (700-1 3/4)	1440-2 663 (800-2)



HIRL Rwy 18-36 **0**  
MIRL Rwy 11-29 **0**

SE-4, 16 APR 2026 to 14 MAY 2026

SE-4, 16 APR 2026 to 14 MAY 2026