

WAAS CH 58304 W36A	APP CRS 005°	Rwy Ldg TDZE Apt Elev	5264 759 777
--	------------------------	-----------------------------	---

RNAV (GPS) RWY 36

AUBURN UNIVERSITY RGNL (AUO)

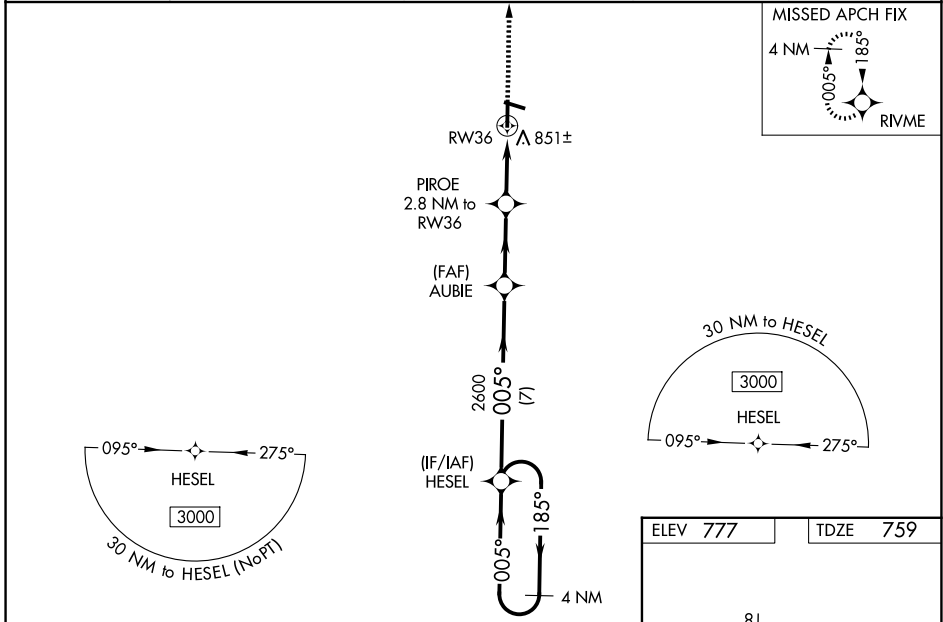
⚠ For uncompensated Baro-VNAV systems, LNAV/VNAV NA below -16°C (4°F) or above 54°C (130°F). Baro-VNAV and VDP NA when using Columbus altimeter setting.

⚠ DME/DME RNP-0.3 NA. When local altimeter setting not received, use Columbus altimeter setting: increase LPV DA to 1072 feet and visibility all Cats 1/8 SM; increase LNAV/VNAV DA to 1173 feet and visibility all Cats 3/8 SM; increase all MDA 120 feet and LNAV Cats C/D visibility 1/4 SM and Circling Cats C/D visibility 1/2 SM. For inop ALS, increase LNAV/VNAV Cat D visibility 1/4 SM and LNAV Cat D visibility 1/8 SM. For inop ALS, when using Columbus altimeter setting, increase LPV all Cats visibility to 1 1/8 SM, LNAV/VNAV all Cats visibility to 1 1/2 SM, and LNAV all Cats visibility to 1 3/8 SM.

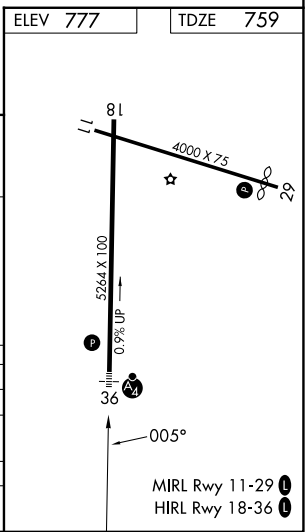
MALSF

MISSED APPROACH:
Climb to 3000 direct RIVME and hold.

AWOS-3PT 132.575	ATLANTA APP CON ★ 125.5 323.1	AUBURN TOWER ★ 123.875 (CTAF) 0	GND CON ★ 121.625	UNICOM 123.0
----------------------------	---	--	-----------------------------	------------------------



4 NM Holding Pattern HESEL		3000 RIVME		
GP 3.00° TCH 44		* LNAV only		
185° ← 005° →		* 1.1 NM to RW36		
2600		RW36		
7 NM		1.1 NM		
2.9 NM		1.7 NM		
CATEGORY	A	B	C	D
LPV DA		959-3/4	200 (200-3/4)	
LNAV/VNAV DA		1060-7/8	301 (300-7/8)	
LNAV MDA	1120-3/4	361 (400-3/4)	1120-7/8	361 (400-7/8)
CIRCLING	1280-1 503 (600-1)	1360-1 583 (600-1)	1380-1 3/4 603 (700-1 3/4)	1480-2 1/4 703 (800-2 1/4)



SE-4, 16 APR 2026 to 14 MAY 2026

SE-4, 16 APR 2026 to 14 MAY 2026