

WAAS CH <b>70418</b> <b>W05A</b>	APP CRS <b>047°</b>	Rwy ldg TDZE Apt Elev	<b>5500</b> <b>309</b> <b>333</b>
--	------------------------	-----------------------------	---

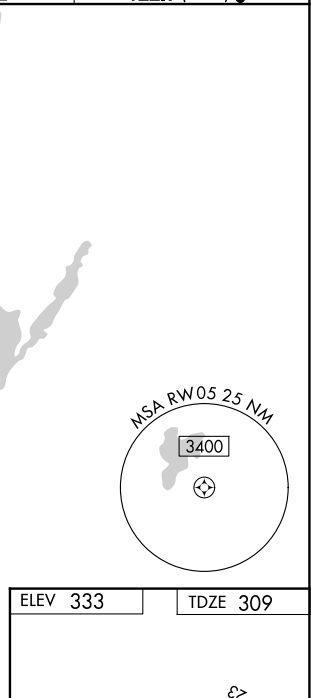
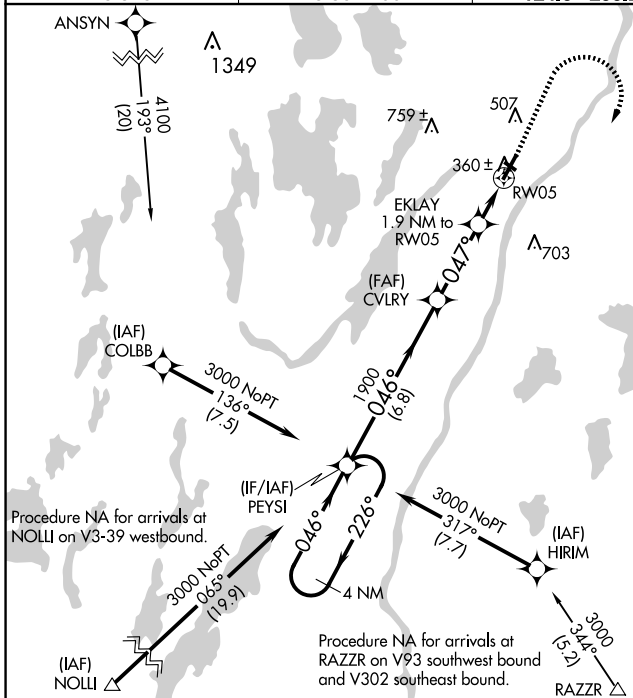
# RNAV (GPS) RWY 5

WATERVILLE RGNL (WVL)

**⚠** Inop table does not apply to LPV. For uncompensated Baro-VNAV systems, LNAV/VNAV NA below -15°C (5°F) or above 54°C (130°F). DME/DME RNP-0.3 NA. Helicopter visibility reduction below 3/4 SM NA. Baro-VNAV and VDP NA when using Augusta altimeter setting. When local altimeter setting not received, use Augusta altimeter setting; increase LPV DA to 544 feet, LNAV/VNAV DA to 623 feet and all visibilities 7/8 SM; increase all MDAs 40 feet and Circling Cat C visibility 1/2 SM. Night Landing: Rwy 14 NA. For inop MALSF, increase LNAV/VNAV Cat D visibility to 1 mile and LNAV Cats C/D visibility to 7/8 mile. For inop MALSF, when using Augusta altimeter setting, increase LPV all Cats visibility to 7/8 mile, LNAV/VNAV Cat D visibility to 1 1/2 mile, and LNAV Cat D visibility to 1 mile.

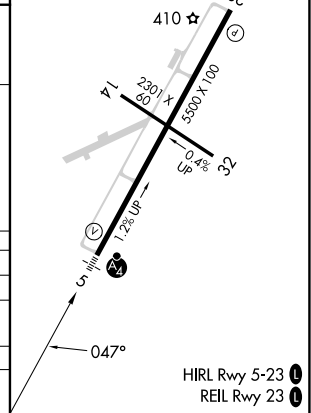
**MALSF**  
**⚠** MISSED APPROACH: Climb to 1000 then climbing right turn to 3000 direct PEYSI and hold.

AWOS-3PT <b>118.375</b>	PORTLAND APP CON ★ <b>128.35 299.2</b>	CLNC DEL <b>124.6 299.2</b>	UNICOM <b>122.7 (CTAF) 0</b>
----------------------------	---	--------------------------------	---------------------------------



4 NM Holding Pattern	PEYSI	CVLRY	EKLAY 1.9 NM to RW05	1000	3000	PEYSI
3000 ← 226°	← 046°	← 046°	← 047°	← 047°	← 047°	← 047°
GP 3.00° TCH 48	1900	1900	*920			
	6.8 NM	3.1 NM	1 NM	0.9 NM		

CATEGORY	A	B	C	D
LPV DA		509-3/4	200 (200-3/4)	
LNAV/VNAV DA		588-3/4	279 (300-3/4)	
LNAV MDA		620-3/4	311 (300-3/4)	
CIRCLING	860-1	527 (600-1)	1100-2 1/4 767 (800-2 1/4)	1120-2 1/2 787 (800-2 1/2)



NE-1, 16 APR 2026 to 14 MAY 2026

NE-1, 16 APR 2026 to 14 MAY 2026