

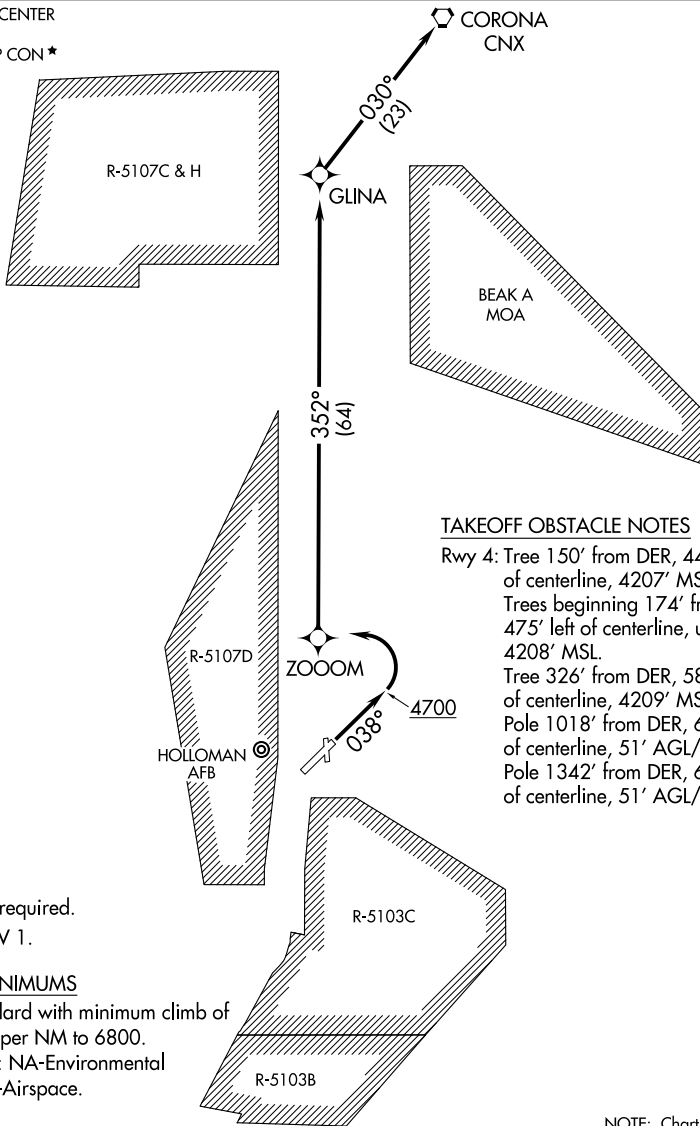
(CRONA1.CNX) 21112

AL-5130 (FAA) ALAMOGORDO-WHITE SANDS RGNL (A.L.M)

CORONA ONE DEPARTURE (OBSTACLE) (RNAV)

ALAMOGORDO, NEW MEXICO

ALBUQUERQUE CENTER
132.65 257.6
HOLLOMAN DEP CON *
128.1 284.0
UNICOM
122.8
AWOS-3
127.825



TAKEOFF OBSTACLE NOTES

Rwy 4: Tree 150' from DER, 440' right of centerline, 4207' MSL.
 Trees beginning 174' from DER, 475' left of centerline, up to 4208' MSL.
 Tree 326' from DER, 585' left of centerline, 4209' MSL.
 Pole 1018' from DER, 694' left of centerline, 51' AGL/4258' MSL.
 Pole 1342' from DER, 659' left of centerline, 51' AGL/4260' MSL.

NOTE: GPS required.
NOTE: RNAV 1.

TAKEOFF MINIMUMS

Rwy 4: Standard with minimum climb of 320' per NM to 6800.
 Rwy 17, 35: NA-Environmental
 Rwy 22: NA-Airspace.

NOTE: Chart not to scale.

DEPARTURE ROUTE DESCRIPTION

TAKEOFF RUNWAY 4: Climb on heading 038° to 4700, then climbing left turn direct ZOOM, and on track 352° to GLINA, and on track 030° to CNX VORTAC.

CORONA ONE DEPARTURE (OBSTACLE) (RNAV)

ALAMOGORDO, NEW MEXICO

(CRONA1.CNX) 22APR21

ALAMOGORDO-WHITE SANDS RGNL (A.L.M)

SW-1, 16 APR 2026 to 14 MAY 2026

SW-1, 16 APR 2026 to 14 MAY 2026