

WAAS CH 69240 W04A	APP CRS 038°	Rwy Ldg TDZE Apt Elev	9207 4150 4200
----------------------------------------	------------------------	-----------------------------	-------------------------------------------

RNAV (GPS) RWY 4

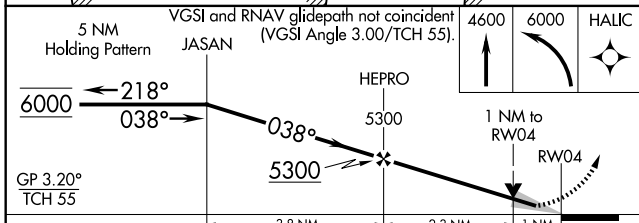
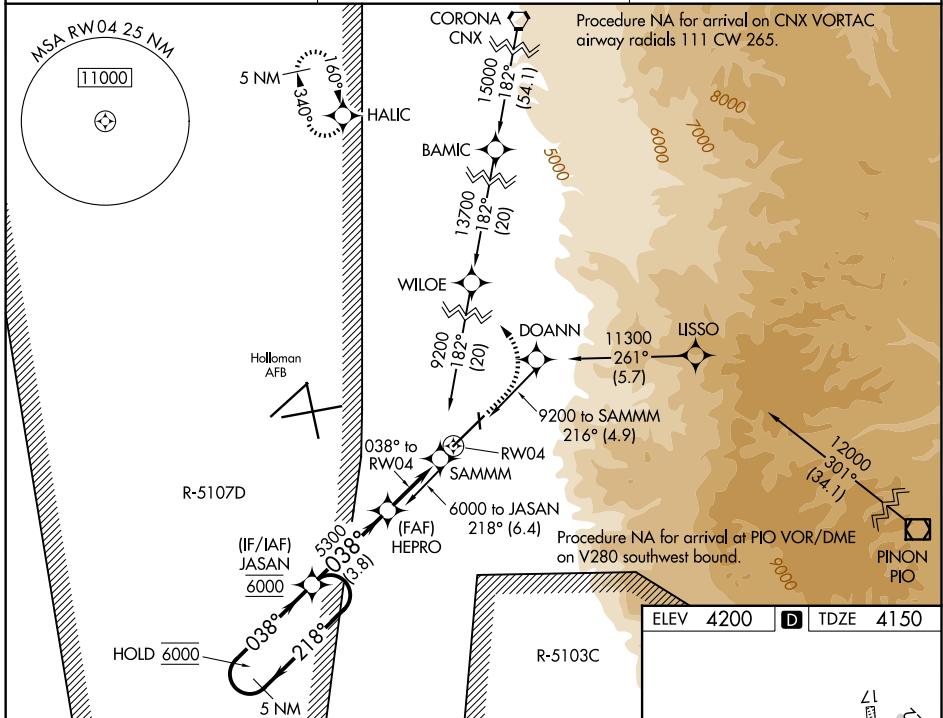
ALAMOGORDO-WHITE SANDS RGNL (A.I.M)

RNP APCH - GPS.

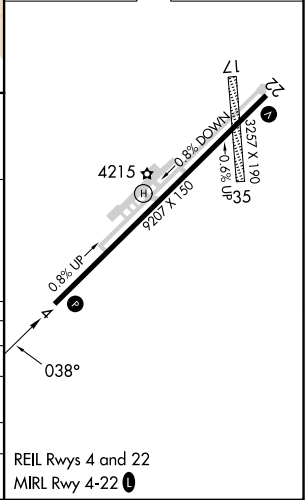
▼ Circling NA for Cats C southeast of Rwy 4-22.
 ▲ Circling NA to Rwy 17 and 35.
 For uncompensated Baro-VNAV systems, LNAV/VNAV NA below -23°C or above 54°C.
 Civil aircraft require ATC clearance prior to entering Restricted Area 5107D.

MISSED APPROACH: Climb to 4600 then climbing left turn to 6000 direct HALIC and hold.

AWOS-3 127.825	HOLLOMAN APP CON ★ 120.6 269.225	UNICOM 122.8 (CTAF) 0
--------------------------	--------------------------------------------	---------------------------------



ELEV 4200	TDZE 4150
-----------	-----------



CATEGORY	A	B	C	D
LPV DA		4400-1	250 (200-1)	
LNAV/VNAV DA		4420-1	270 (300-1)	
LNAV MDA		4500-1	350 (300-1)	
CIRCLING	4760-1 560 (600-1)	4880-1 680 (700-1)	4960-2¼ 760 (800-2¼)	NA

REIL Rwy 4 and 22
MIRL Rwy 4-22 0

SW-1, 16 APR 2026 to 14 MAY 2026

SW-1, 16 APR 2026 to 14 MAY 2026