

LOC I-JAN 110.5	APP CRS 159°	Rwy Ldg 8500
		TDZE 312
		Apt Elev 346

ILS RWY 16L (CAT II & III)

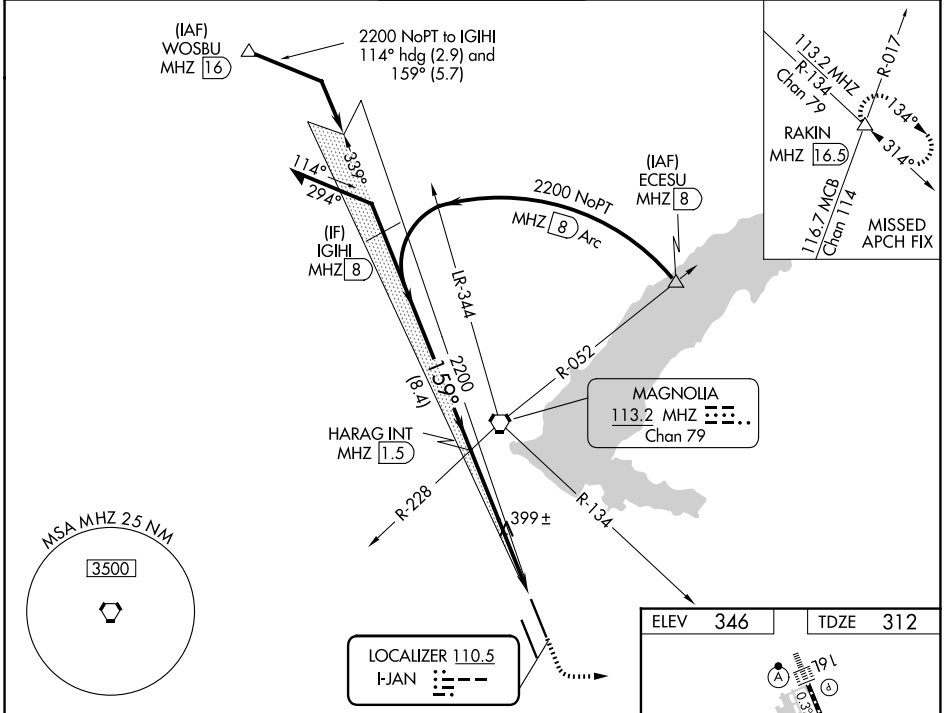
JACKSON-MEDGAR WILEY EVERS INTL (JAN)

ASR When control tower closed, procedure NA.
When local altimeter setting not received, procedure NA.

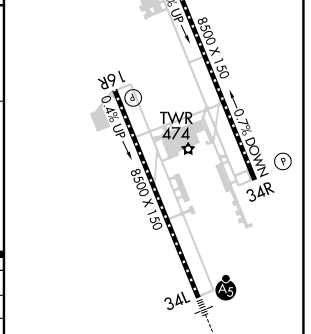
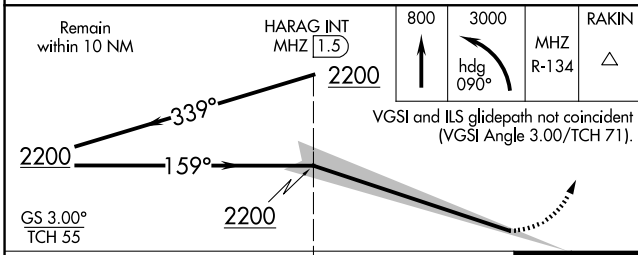
ALSF-2

MISSED APPROACH: Climb to 800 then climbing left turn to 3000 on heading 090° and on MHZ VORTAC R-134 to RAKIN INT/16.5 DME and hold, continue climb-in-hold to 3000.

ATIS 121.05	JACKSON APP CON* 123.9 317.7	JACKSON TOWER* 120.9 (CTAF) 352.0	GND CON 121.7 348.6	UNICOM 122.95
-----------------------	----------------------------------------	---------------------------------------------	-------------------------------	-------------------------



ELEV	346	TDZE	312
------	-----	------	-----



CATEGORY	A	B	C	D
S-ILS 16L	CAT II RA 119/12 100 DA 412			
S-ILS 16L	CAT III RVR 07			

CATEGORY II & III ILS - SPECIAL AIRCREW & AIRCRAFT CERTIFICATION REQUIRED

TDZL/RCLS Rwy 16L and 34L
REIL Rwy 16R and 34R
HIRL Rwy 16L-34R and 16R-34L

SC-4, 16 APR 2026 to 14 MAY 2026

SC-4, 16 APR 2026 to 14 MAY 2026