

WAAS CH <b>72911</b> <b>W16A</b>	APP CRS <b>159°</b>	Rwy Ldg <b>8500</b> TDZE <b>312</b> Apt Elev <b>346</b>
--	------------------------	---

# RNAV (GPS) RWY 16L

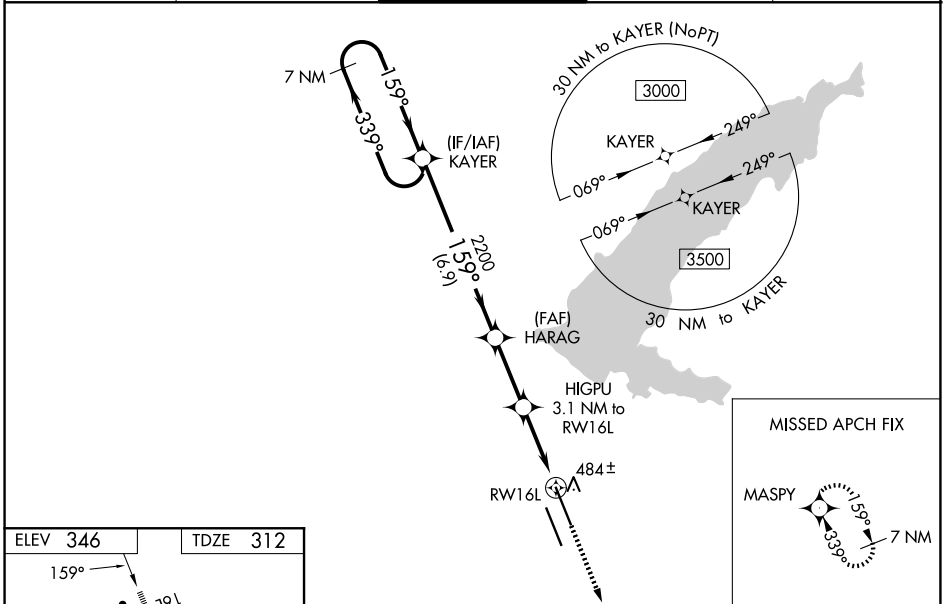
JACKSON-MEDGAR WILEY EVERS INTL (JAN)

RNP APCH.

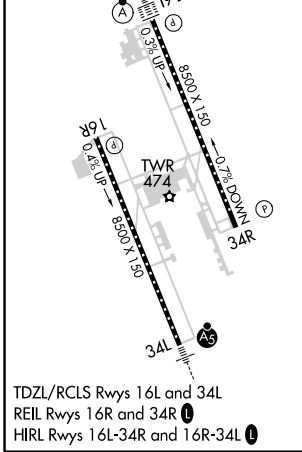
▼ For uncompensated Baro-VNAV systems, LNAV/VNAV NA below -7°C or above 54°C.  
 ▲ Circling NA for Cat E southwest of Rwy 16R-34L. When local altimeter setting not received, use Hawkins Fld altimeter setting and increase all DA 19 feet and all MDA 20 feet, increase ASR LNAV/VNAV all Cats visibility to RVR 3400 and LNAV Cats C/D/E visibility to RVR 5000. VDP and Baro-VNAV NA when using Hawkins Fld altimeter setting. For inop ALS, increase LPV Cat E visibility to RVR 4000, LNAV/VNAV Cat E visibility to RVR 5500, and LNAV Cat E visibility to 1 3/8 SM. For inop ALS when using Hawkins Fld altimeter setting, increase LPV Cat E visibility to RVR 4000, LNAV/VNAV Cat E visibility to RVR 6000, and LNAV Cat E visibility to 1 3/8 SM.

ALSF-2 MISSED APPROACH: Climb to 3000 direct MASPY and hold.

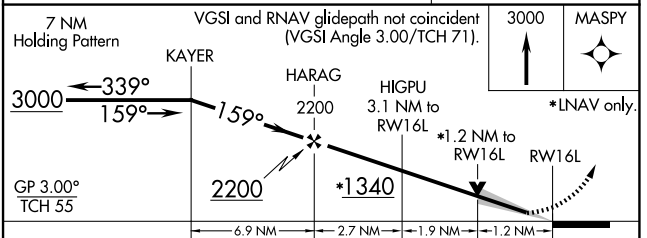
ATIS <b>121.05</b>	JACKSON APP CON * <b>123.9 317.7</b>	JACKSON TOWER * <b>120.9 (CTAF) 352.0</b>	GND CON <b>121.7 348.6</b>	UNICOM <b>122.95</b>
-----------------------	---	--	-------------------------------	-------------------------



ELEV <b>346</b>	TDZE <b>312</b>
-----------------	-----------------



JACKSON, MISSISSIPPI  
Amdt 2C 22APR21



CATEGORY	A	B	C	D	E
LPV DA	512/18 200 (200-1/2)				
LNAV/VNAV DA	652/31 340 (400-5/8)				
LNAV MDA	760/24 448 (500-1/2)		760/45 448 (500-7/8)		
CIRCLING	880-1	900-1	900-1 1/2	960-2	1040-2 1/2
	534 (600-1)	554 (600-1)	554 (600-1 1/2)	614 (700-2)	694 (700-2 1/2)

JACKSON-MEDGAR WILEY EVERS INTL (JAN)  
32°19'N-90°05'W

# RNAV (GPS) RWY 16L

SC-4, 16 APR 2026 to 14 MAY 2026

SC-4, 16 APR 2026 to 14 MAY 2026