

WAAS CH 56415 W30A	APP CRS 298°	Rwy Idg TDZE Apt Elev	5320 919 919
---------------------------------	------------------------	-----------------------------	---

RNAV (GPS) RWY 30

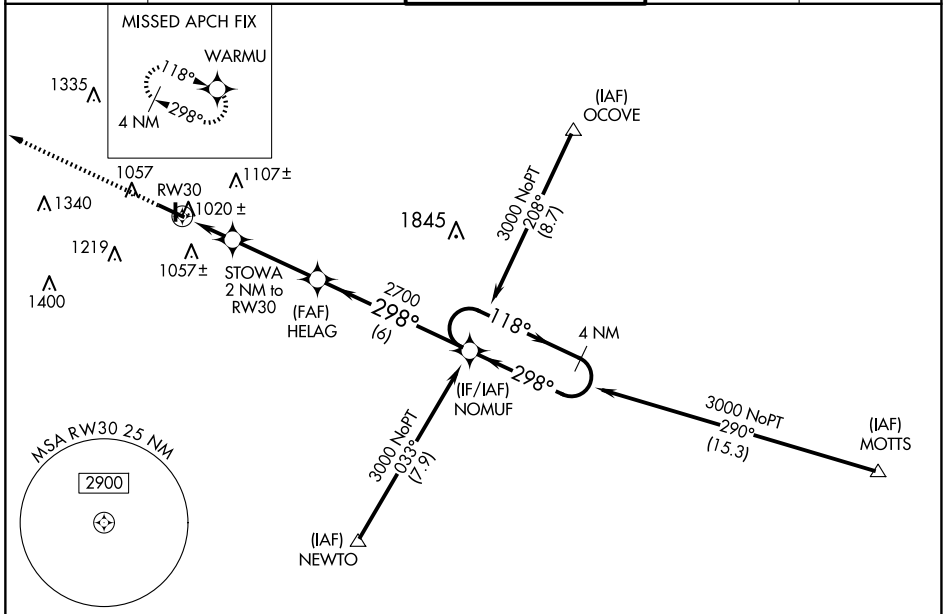
ANDERSON RGNL (AID)

RNP APCH

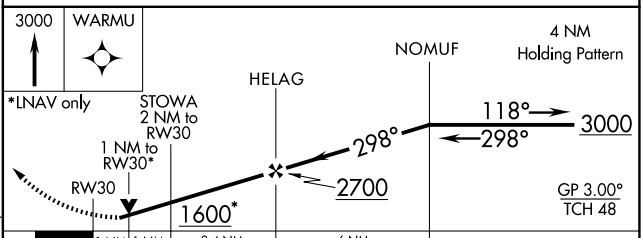
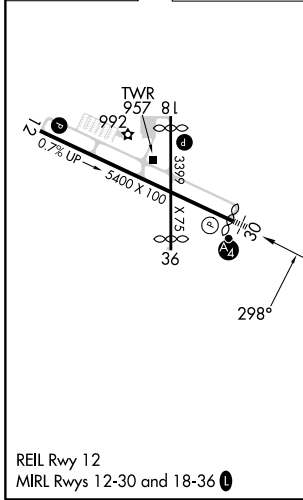
For uncompensated Baro-VNAV systems, LNAV/VNAV NA below -16°C (4°F) or above 47°C (116°F). When local altimeter setting not received, use Muncie altimeter setting and increase all DA 32 feet and all MDA 40 feet, and increase LPV and LNAV/VNAV all Cats and LNAV Cat C visibility ¼ mile. Inoperative table does not apply.
Rwy 30 helicopter visibility reduction below ¾ SM NA.

MALSIF 	MISSED APPROACH: Climb to 3000 direct WARMU and hold.
------------	---

AWOS-3 128.55	INDIANAPOLIS APP CON 120.65 317.8	ANDERSON TOWER * 126.0 (CTAF) 0	GND CON 121.6	UNICOM 122.95
-------------------------	---	--	-------------------------	-------------------------



ELEV 919	TDZE 919
-----------------	-----------------



CATEGORY	A	B	C	D
LPV DA	1234-1		315 (400-1)	
LNAV/VNAV DA	1367-1½		448 (500-1½)	
LNAV MDA	1300-1		381 (400-1)	
CIRCLING	1360-1 441 (500-1)	1400-1 481 (500-1)	1520-1¾ 601 (700-1¾)	1300-1¼ 381 (400-1¼)

EC-2, 16 APR 2026 to 14 MAY 2026

EC-2, 16 APR 2026 to 14 MAY 2026