

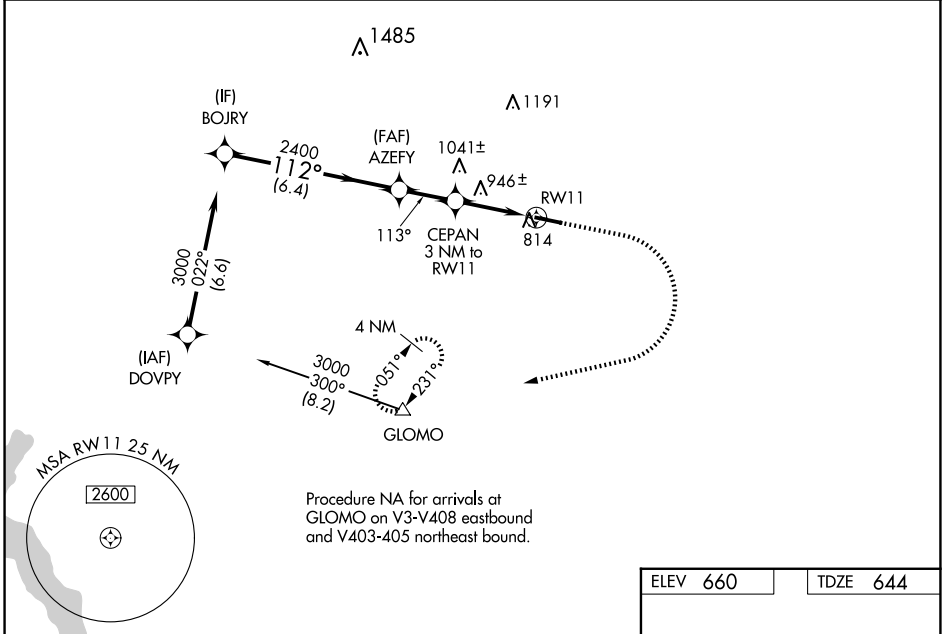
WAAS CH <b>63006</b> <b>W11A</b>	APP CRS <b>113°</b>	Rwy Ldg TDZE Apt Elev	<b>5400</b> <b>644</b> <b>660</b>
--	------------------------	-----------------------------	---

# RNAV (GPS) RWY 11

CHESTER COUNTY G O CARLSON (MQS)

RNP APCH - GPS.		<p>MISSED APPROACH: Climb to 1300 then climbing right turn to 3000 direct GLOMO and hold, continue climb-in-hold to 3000.</p>
<p><b>⚠</b> Helicopter visibility reduction below 3/4 SM NA. For uncompensated Baro-VNAV systems, LNAV/VNAV NA below -16°C or above 54°C.</p>		

AWOS-3 <b>126.25</b>	PHILADELPHIA APP CON <b>124.35 319.15</b>	CLNC DEL <b>125.6</b>	UNICOM <b>122.7 (CTAF) 0</b>
-------------------------	--	--------------------------	---------------------------------



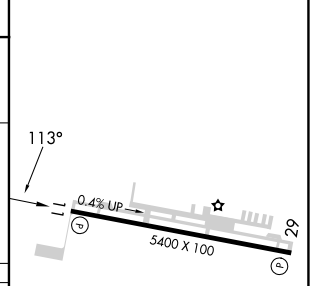
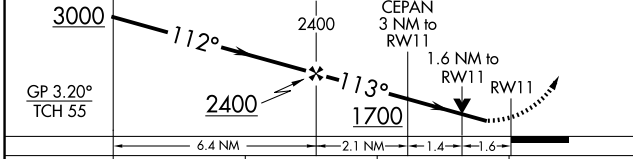
Procedure NA for arrivals at GLOMO on V3-V408 eastbound and V403-405 northeast bound.

NE-4, 16 APR 2026 to 14 MAY 2026

NE-4, 16 APR 2026 to 14 MAY 2026

ELEV 660	TDZE 644
----------	----------

VGSI and RNAV glidepath not coincident (VGSI Angle 3.20/TCH 55).



CATEGORY	A	B	C	D
LPV DA	973-1		329 (400-1)	
LNAV/VNAV DA	1091-1 3/8		447 (500-1 3/8)	
LNAV MDA	1200-1	556 (600-1)	1200-1 5/8	556 (600-1 5/8)
<b>C</b> CIRCLING	1200-1 540 (600-1)	1240-1 580 (600-1)	1260-1 5/8 600 (600-1 5/8)	1420-2 1/2 760 (800-2 1/2)

HIRL Rwy 11-29 **0**  
REIL Rws 11 and 29 **0**