

WAAS CH 82506 W29A	APP CRS 293°	Rwy Ldg TDZE Apt Elev	5400 660 660
--	------------------------	-----------------------------	---

RNAV (GPS) RWY 29

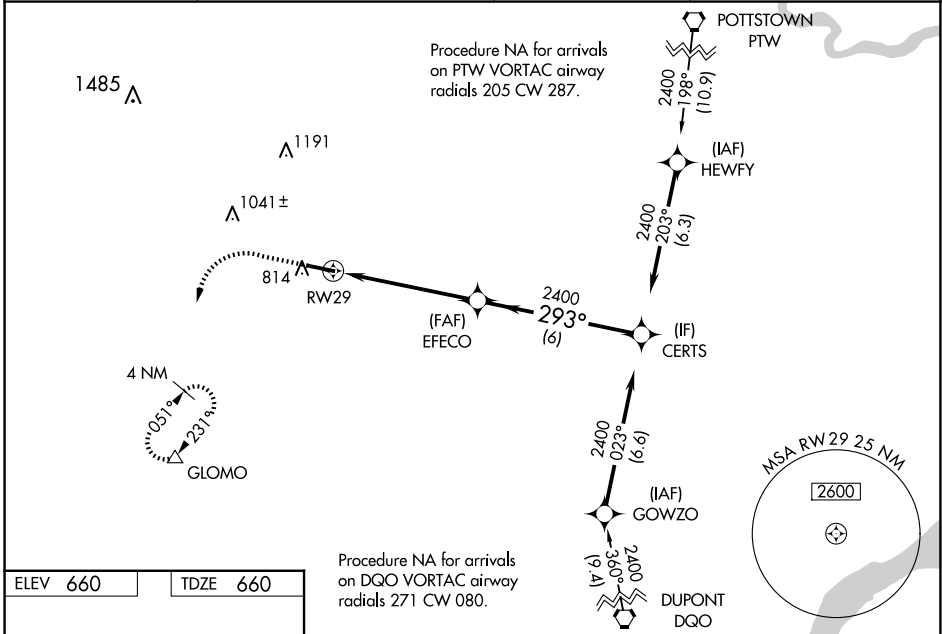
CHESTER COUNTY G O CARLSON (MQS)

RNP APCH - GPS.

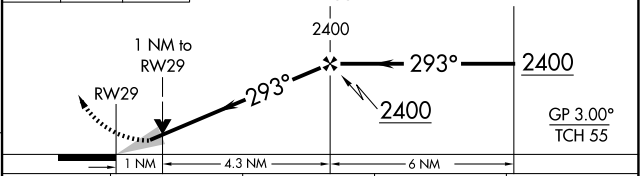
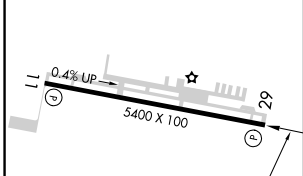
⚠ For uncompensated Baro-VNAV systems, LNAV/VNAV NA below -16°C or above 54°C.

MISSED APPROACH: Climb to 1300 then climbing left turn to 3000 direct GLOMO and hold, continue climb-in-hold to 3000.

AWOS-3 126.25	PHILADELPHIA APP CON 124.35 319.15	CLNC DEL 125.6	UNICOM 122.7 (CTAF) 0
-------------------------	--	--------------------------	---------------------------------



ELEV 660	TDZE 660
----------	----------



CATEGORY	A	B	C	D
LPV DA		910-3/4	250 (300-3/4)	
LNAV/VNAV DA		915-3/4	255 (300-3/4)	
LNAV MDA		1020-1	360 (400-1)	
C CIRCLING	1140-1 480 (500-1)	1240-1 580 (600-1)	1260-1 1/2 600 (600-1 1/2)	1420-2 1/2 760 (800-2 1/2)

NE-4, 16 APR 2026 to 14 MAY 2026

NE-4, 16 APR 2026 to 14 MAY 2026