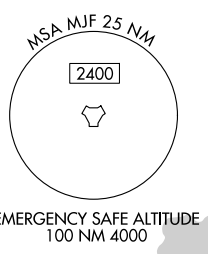
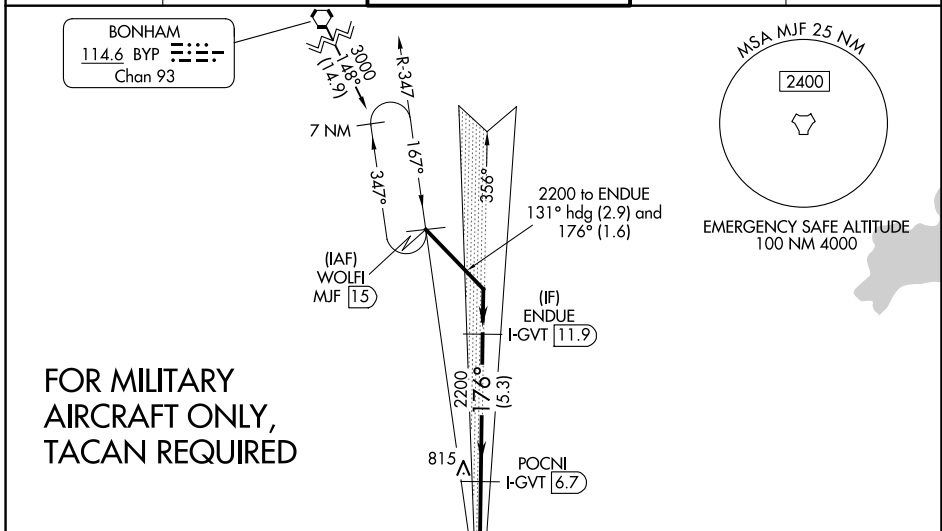


LOC/DME I-GVT <b>110.5</b> Chan <b>42</b>	APP CRS <b>176°</b>	Rwy Ldg <b>8030</b> TDZE <b>534</b> Apt Elev <b>535</b>
---	------------------------	---

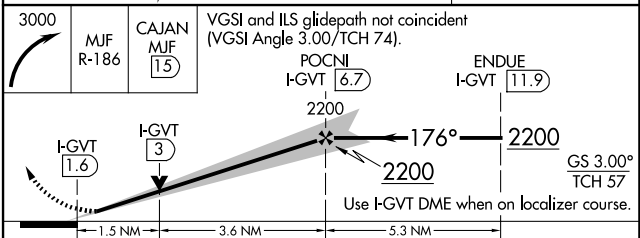
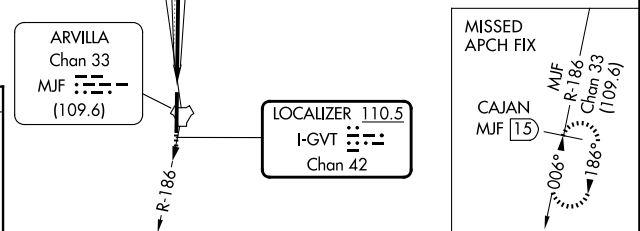
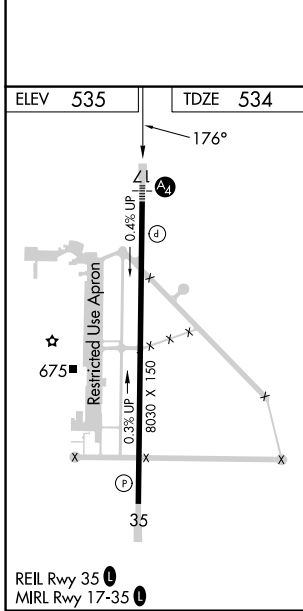
# ILS Y or LOC Y RWY 17

MAJORS (GVT)

DME required.		MALS 	MISSED APPROACH: Climbing right turn to 3000 on MJF TACAN R-186 to CAJAN/MJF TACAN 15 DME and hold.	
 Inop table does not apply to S-ILS 17 all Cats and S-LOC 17 Cats A/B. For inop ALS, increase S-LOC 17 Cat E visibility to 1 1/2 SM. Autopilot coupled approach NA below 900 feet.				
AWOS-3 <b>133.425</b>	FORT WORTH CENTER <b>132.025 317.75</b>	MAJORS TOWER★ <b>118.65 (CTAF) 0 385.425</b>	GND CON <b>121.7 335.8</b>	UNICOM <b>122.95</b>



**FOR MILITARY AIRCRAFT ONLY, TACAN REQUIRED**



CATEGORY	A	B	C	D	E
S-ILS 17	734-1		200 (200-1)		
S-LOC 17	1060-1	526 (600-1)	1060-1 1/4 526 (600-1 1/4)		
CIRCLING	1060-1 525 (600-1)	1080-1 545 (600-1)	1080-1 1/2 545 (600-1 1/2)	1240-2 1/4 705 (800-2 1/4)	1300-2 3/4 765 (800-2 3/4)

SC-2, 16 APR 2026 to 14 MAY 2026

SC-2, 16 APR 2026 to 14 MAY 2026