

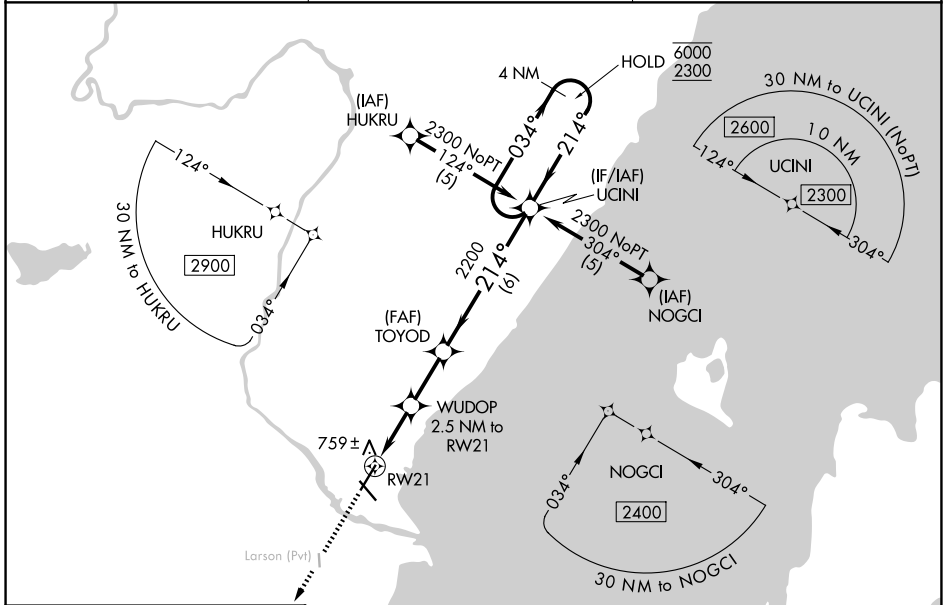
APP CRS	Rwy Ldg	6001
214°	TDZE	625
	Apt Elev	625

RNAV (GPS) RWY 21

MENOMINEE RGNL (MNM)

RNP APCH.	<p>▼ Circling Rwy 14, 32 NA at night. Rwy 21 helicopter visibility reduction below ¼ SM NA.</p> <p>▲ VDP NA when using Sturgeon Bay altimeter setting. When local altimeter setting not received, use Sturgeon Bay altimeter setting and increase all MDA 60 feet, increase LNAV Cat C/D and Circling Cat C/D visibility ¼ SM.</p>	MISSED APPROACH: Climb to 2200 direct OMUPE and hold.
-----------	--	--

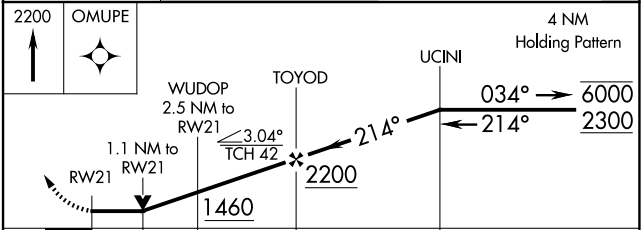
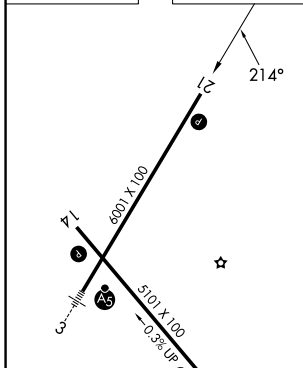
AWOS-3PT 121.45	GREEN BAY APP CON ★ 120.3 338.2	UNICOM 122.8 (CTAF) 0
---------------------------	---	---------------------------------



EC-1, 16 APR 2026 to 14 MAY 2026

EC-1, 16 APR 2026 to 14 MAY 2026

ELEV 625	TDZE 625
----------	----------



CATEGORY	A	B	C	D
LNAV MDA	1020-1	395 (400-1)	1020-1½	395 (400-1½)
CIRCLING	1200-1	575 (600-1)	1200-1½	1380-2½
			575 (600-1½)	755 (800-2½)