

LOC/DME I-AFJ 110.3 Chan 40	APP CRS 273°	Rwy Idg TDZE 1184 Apt Elev 1184
------------------------------------------	------------------------	-----------------------------------------------------

ILS or LOC RWY 27

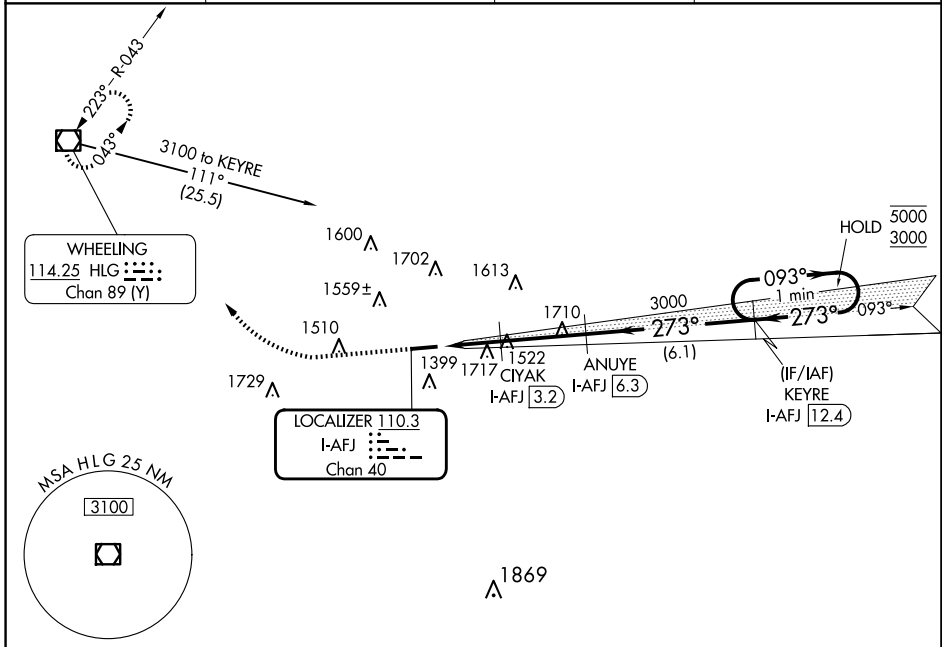
WASHINGTON COUNTY (AFJ)

DME required. RADAR required for procedure entry.

▼ Circling NA for Cat D N of Rwy 9-27. Rwy 27 helicopter visibility reduction below 3/4 NA. Circling Rwy 9 NA at night.

▲ MISSED APPROACH: Climb to 1700 then climbing right turn to 3300 direct HLG VOR/DME and hold.

AWOS-3PT 119.175	PITTSBURGH APP CON 119.35 285.575	CLNC DEL 127.3	UNICOM 122.975 (CTAF) 0
----------------------------	---------------------------------------------	--------------------------	-----------------------------------



NE-4, 16 APR 2026 to 14 MAY 2026

NE-4, 16 APR 2026 to 14 MAY 2026

ELEV 1184	TDZE 1184
------------------	------------------

