

WAAS CH 42633 W35A	APP CRS 354°	Rwy Idg TDZE Apt Elev	7401 966 1000
----------------------------------------	------------------------	-----------------------------	------------------------------------------

RNAV (GPS) RWY 35

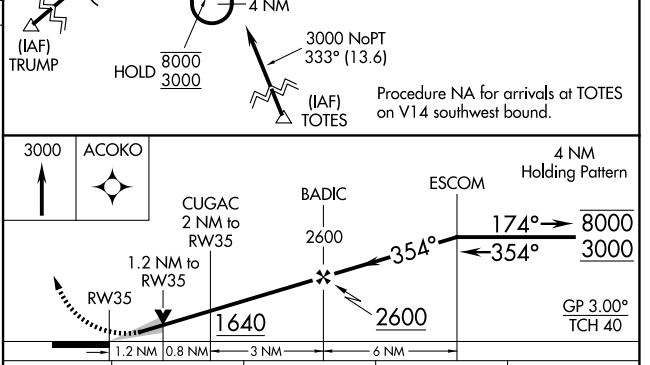
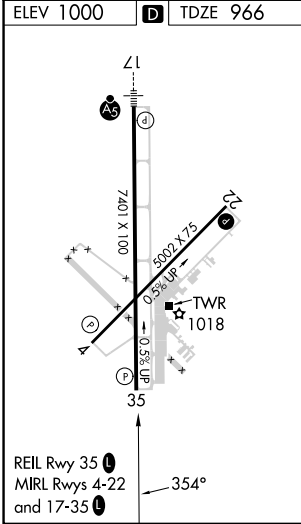
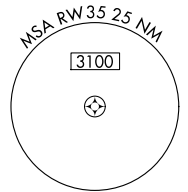
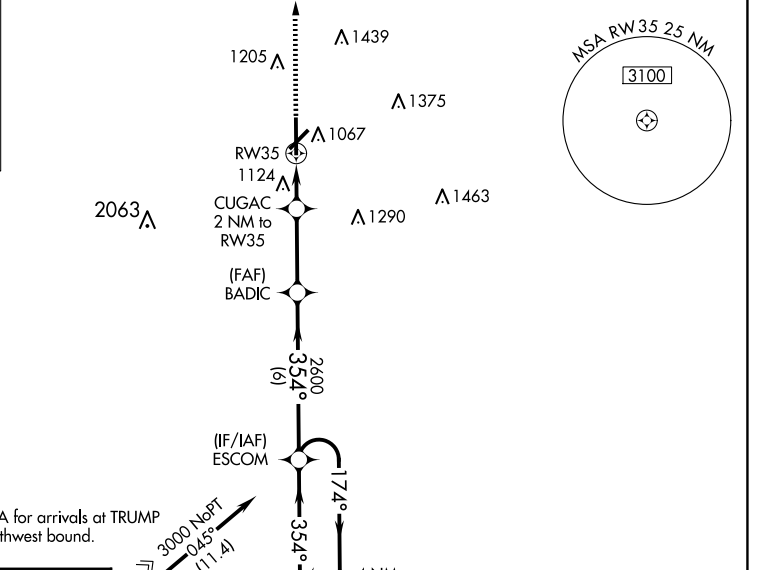
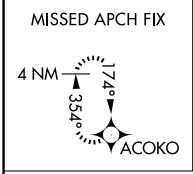
STILLWATER RGNL (SWO)

RNP APCH - GPS.

⚠ Baro-VNAV and VDP NA when using Ponca City altimeter setting. For uncompensated Baro-VNAV systems, LNAV/VNAV NA below -16°C or above 54°C. When local altimeter setting not received, use Ponca City altimeter setting: increase LPV DA to 1246 feet and all visibilities ½ SM. Increase LNAV/VNAV DA to 1336 feet and all visibilities ¼ SM. Increase all MDAs 80 feet and LNAV visibility Cats C/D ¼, and Circling visibility Cat D ¼ SM.

MISSED APPROACH:
Climb to 3000 direct ACOKO and hold.

ASOS 135.725	KANSAS CITY CENTER 127.8 319.1	STILLWATER TOWER ★ 125.35 (CTAF) 0	GND CON 121.6	UNICOM 122.95
------------------------	------------------------------------------	-----------------------------------------------------	-------------------------	-------------------------



CATEGORY	A	B	C	D
LPV DA		1166-¾	200 (200-¾)	
LNAV/VNAV DA		1256-1	290 (300-1)	
LNAV MDA	1380-1	414 (400-1)	1380-1½	414 (400-1½)
C CIRCLING	1460-1 460 (500-1)	1480-1 480 (500-1)	1540-1½ 540 (600-1½)	1740-2¼ 740 (800-2¼)

SC-1, 16 APR 2026 to 14 MAY 2026

SC-1, 16 APR 2026 to 14 MAY 2026