

WAAS CH 58016 W31A	APP CRS 308°	Rwy Idg TDZE Apt Elev	5001 1885 1915
--	------------------------	-----------------------------	---

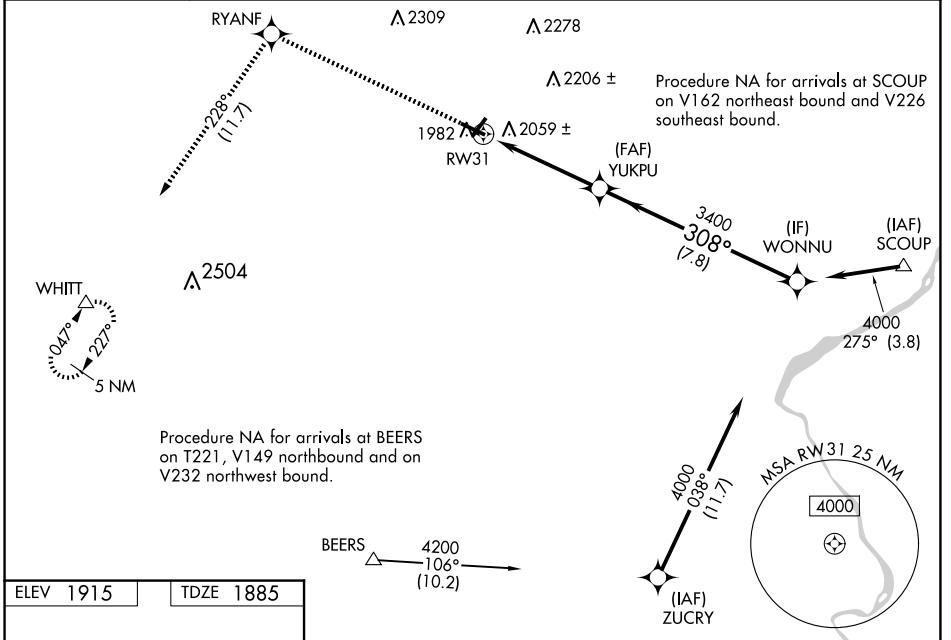
RNAV (GPS) RWY 31

POCONO MOUNTAINS RGNL (MPO)

⚠ Baro-VNAV NA when using Wilkes-Barre/Scranton altimeter setting. For uncompensated Baro-VNAV systems, LNAV/VNAV NA below -18°C (0°F) or above 54°C (130°F).
⚠ Rwy 31 helicopter visibility reduction below ¾ SM NA. DME/DME RNP-0.3 NA.
 When local altimeter setting not received, use Wilkes-Barre/Scranton altimeter setting: increase LPV DA to 2403 feet and visibility ¼ SM, LNAV/VNAV DA to 2446 feet and visibility ¾ SM; increase all MDAs 180 feet and visibility LNAV Cat C/D ¾ SM and Circling Cat C/D ½ SM. Circling Rwy 23 NA at night.

MISSED APPROACH: Climb to 4200 direct RYANF and on track 228° to WHITT and hold.

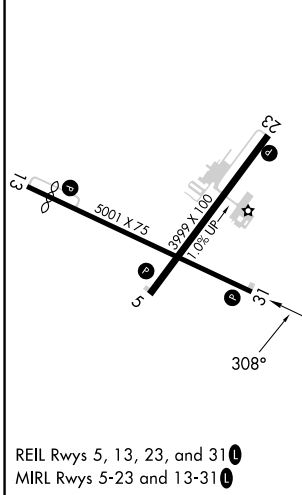
ASOS 120.275	WILKES-BARRE APP CON 126.3 256.7	CLNC DEL 125.3	UNICOM 122.7 (CTAF) 0
------------------------	--	--------------------------	---------------------------------



NE-4, 16 APR 2026 to 14 MAY 2026

NE-4, 16 APR 2026 to 14 MAY 2026

ELEV 1915	TDZE 1885
------------------	------------------



4200	RYANF	WHITT	VGSI and RNAV glidepath not coincident (VGSI Angle 3.50/TCH 40).																										
↑	✧	tr 228°																											
			WONNU																										
			GP 3.00° TCH 55																										
<table border="1"> <tr> <th>CATEGORY</th> <th>A</th> <th>B</th> <th>C</th> <th>D</th> </tr> <tr> <td>LPV DA</td> <td></td> <td>2224-1½</td> <td colspan="2">339 (400-1½)</td> </tr> <tr> <td>LNAV/VNAV DA</td> <td></td> <td>2267-1¼</td> <td colspan="2">382 (400-1¼)</td> </tr> <tr> <td>LNAV MDA</td> <td>2320-1</td> <td>435 (500-1)</td> <td>2320-1¾</td> <td>435 (500-1¾)</td> </tr> <tr> <td>C CIRCLING</td> <td>2420-1 505 (600-1)</td> <td>2500-1 585 (600-1)</td> <td>2600-2 685 (700-2)</td> <td>2660-2½ 745 (800-2½)</td> </tr> </table>			CATEGORY	A	B	C	D	LPV DA		2224-1½	339 (400-1½)		LNAV/VNAV DA		2267-1¼	382 (400-1¼)		LNAV MDA	2320-1	435 (500-1)	2320-1¾	435 (500-1¾)	C CIRCLING	2420-1 505 (600-1)	2500-1 585 (600-1)	2600-2 685 (700-2)	2660-2½ 745 (800-2½)		
CATEGORY	A	B	C	D																									
LPV DA		2224-1½	339 (400-1½)																										
LNAV/VNAV DA		2267-1¼	382 (400-1¼)																										
LNAV MDA	2320-1	435 (500-1)	2320-1¾	435 (500-1¾)																									
C CIRCLING	2420-1 505 (600-1)	2500-1 585 (600-1)	2600-2 685 (700-2)	2660-2½ 745 (800-2½)																									