

RNAV (GPS) RWY 14

CRYSTAL (MIC)

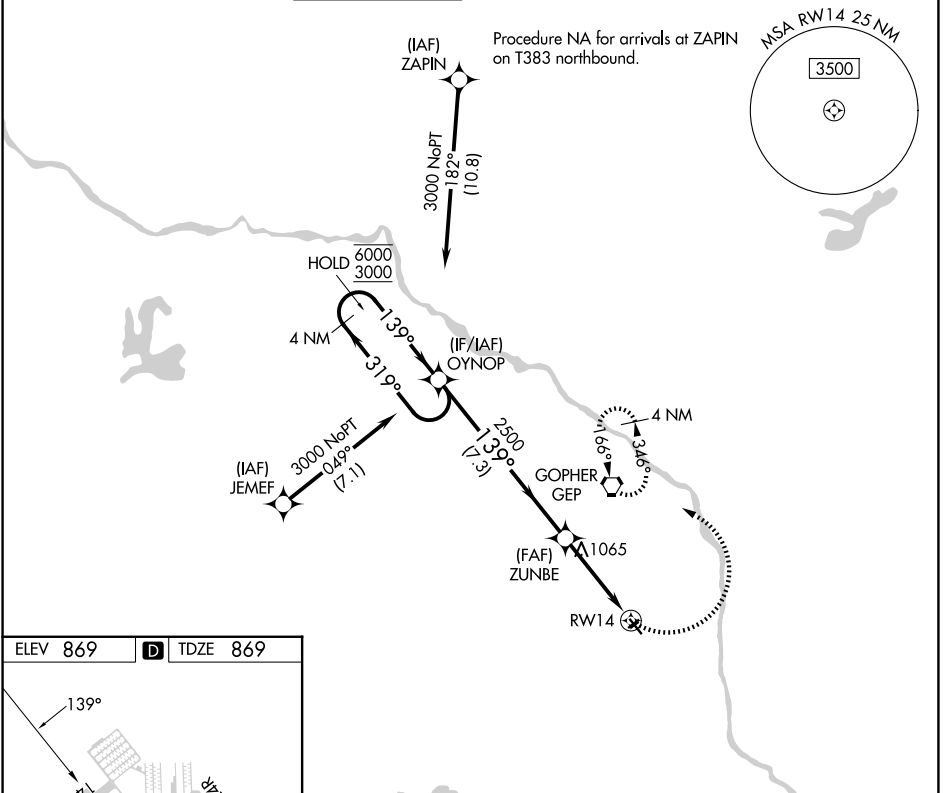
APP CRS 139°	Rwy Ldg TDZE Apt Elev	3508 869 869
------------------------	-----------------------------	---

RNP APCH - GPS.

- Rwy 14 helicopter visibility reduction below 3/4 SM NA.
- Circling NA to Rwy 6R and 24L.

MISSED APPROACH: Climbing left turn to 3100 direct GEP VORTAC and hold, continue climb-in-hold to 3100.

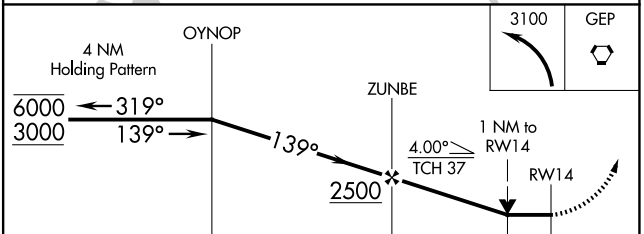
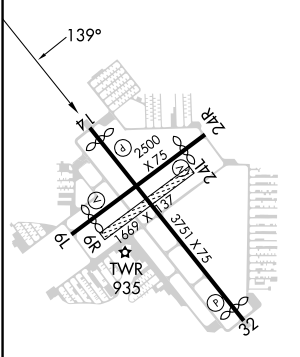
ATIS 124.475	MINNEAPOLIS APP CON 126.5 335.65	CRYSTAL TOWER ★ 120.7 (CTAF) 0	GND CON 121.6	CLNC DEL 121.6	CLNC DEL 121.6 (When twr closed)	UNICOM 122.95
------------------------	--	--	-------------------------	--------------------------	---	-------------------------



NC-1, 16 APR 2026 to 14 MAY 2026

NC-1, 16 APR 2026 to 14 MAY 2026

ELEV 869	D	TDZE 869
----------	----------	----------



CATEGORY	A	B	C	D
LNAV MDA	1320-1	451 (500-1)	NA	
CIRCLING	1340-1 471 (500-1)	1380-1 511 (600-1)	NA	

REIL Rwy 14 and 32
MIRL Rwy 6L-24R and 14-32