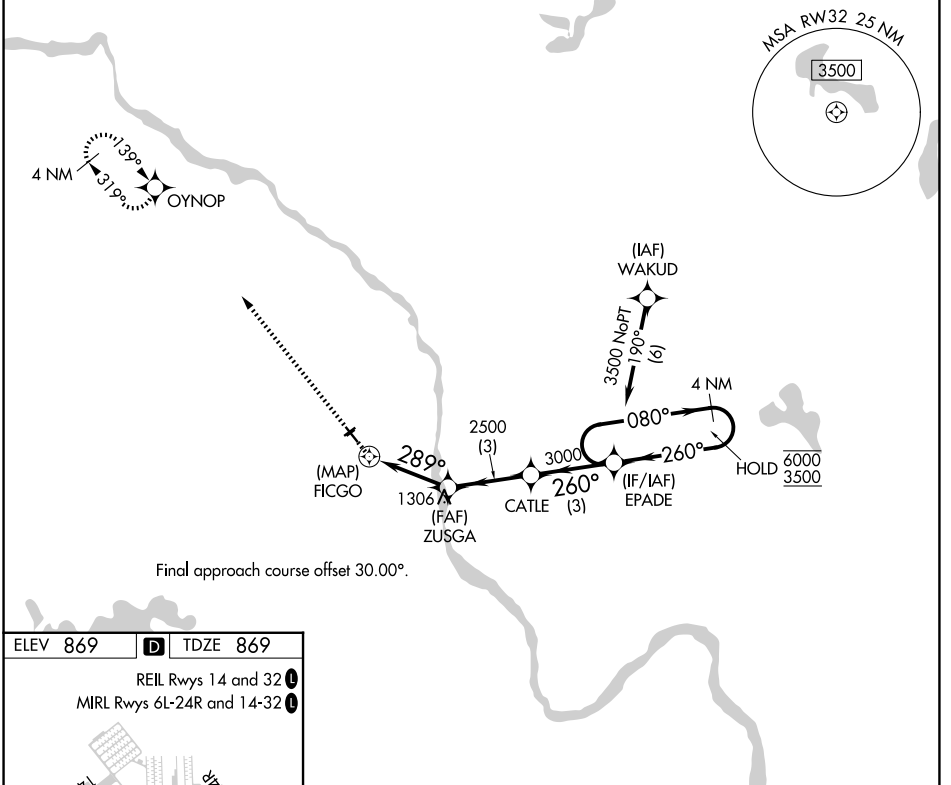


APP CRS	Rwy Ldg	3509
289°	TDZE	869
	Apt Elev	869

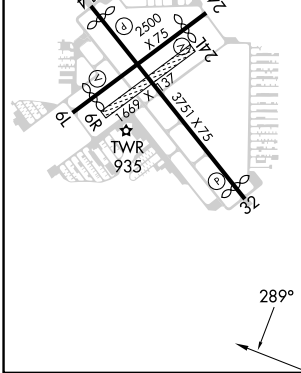
RNAV (GPS) RWY 32

CRYSTAL (MIC)

RNP APCH.		MISSED APPROACH: Climb to 3000 direct OYNOP and hold.						
<p>▼ Circling NA to Rwys 6R and 24L.</p> <p>▲ Rwy 32 helicopter visibility reduction below ¾ SM NA.</p>		ATIS	MINNEAPOLIS APP CON	CRYSTAL TOWER ★	GND CON	CLNC DEL	CLNC DEL	UNICOM
		124.475	126.5 335.65	120.7 (CTAF) 0	121.6	121.6	121.6 (When twr closed)	122.95



Final approach course offset 30.00°.



ELEV 869	D	TDZE 869		
REIL Rwys 14 and 32				
MIRL Rwys 6L-24R and 14-32				
3000	OYNOP			
<p>FICGO → ZUSGA → CATLE → EPADE → 4 NM Holding Pattern</p> <p>Altitudes: 1306, 2500, 3000, 6000, 3500</p> <p>Angles: 289°, 260°, 080°</p> <p>Distances: 0.8, 3 NM, 3 NM, 3 NM</p>				
CATEGORY	A	B	C	D
LNAV MDA	1380-1	511 (600-1)		NA
CIRCLING	1380-1	511 (600-1)		NA

NC-1, 16 APR 2026 to 14 MAY 2026

NC-1, 16 APR 2026 to 14 MAY 2026