

SAN NICOLAS ISLAND, CALIFORNIA

RNAV (GPS) RWY 30

WAAS CH 47673 W30A	APCH CRS 301°	Rwy ldg TDZE Arprt Elev	10,002 506 506
---------------------------------	-------------------------	-------------------------------	---

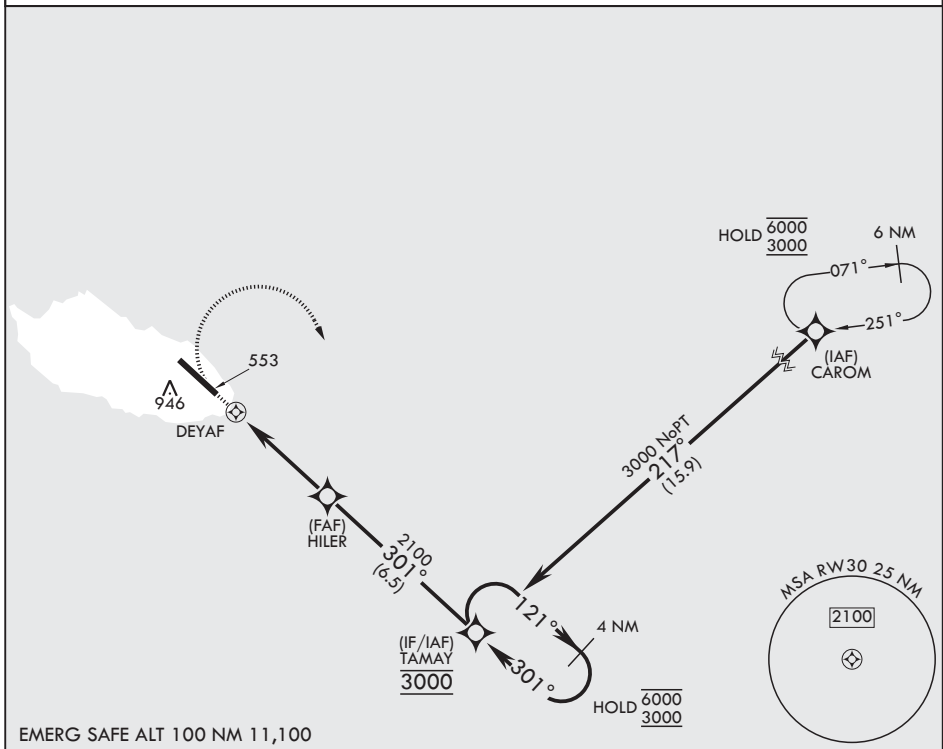
(USN)

SAN NICOLAS ISLAND NOLF (KNSI)

RNP APCH-GPS MISSED APPROACH: Climb to 1100, then climbing right to 3000 direct TAMAY and hold.

▼ * Circling not authorized SW of Rwy 12-30.

CTAF
126.85 379.3



EMERG SAFE ALT 100 NM 11,100

1100 ↑	3000 ↻	TAMAY ⊕	4 NM Holding Pattern		ELEV 506	TDZE 506
CATEGORY	A	B	C	D	E	
LPV DA	706-¾		200	(200-¾)		
RNAV MDA	880-1	374	(400-1)	920-1⅞	980-1⅜	
	374 (400-1)	454 (500-1)		414 (500-1⅞)	474 (500-1⅜)	
CIRCLING*	880-1	960-1	960-1½	1060-2 554 (600-2)		
	374 (400-1)	454 (500-1)	454 (500-1½)			

SAN NICOLAS ISLAND, CALIFORNIA

33°14'N - 119°27'W

SAN NICOLAS ISLAND NOLF (KNSI)

Amdt 1 10JUL25

RNAV (GPS) RWY 30

SW-3, 16 APR 2026 to 14 MAY 2026

SW-3, 16 APR 2026 to 14 MAY 2026