

WAAS CH <b>72631</b> <b>W35A</b>	APP CRS <b>354°</b>	Rwy Idg TDZE Apt Elev	<b>4444</b> <b>324</b> <b>325</b>
--	------------------------	-----------------------------	---

# RNAV (GPS) RWY 35

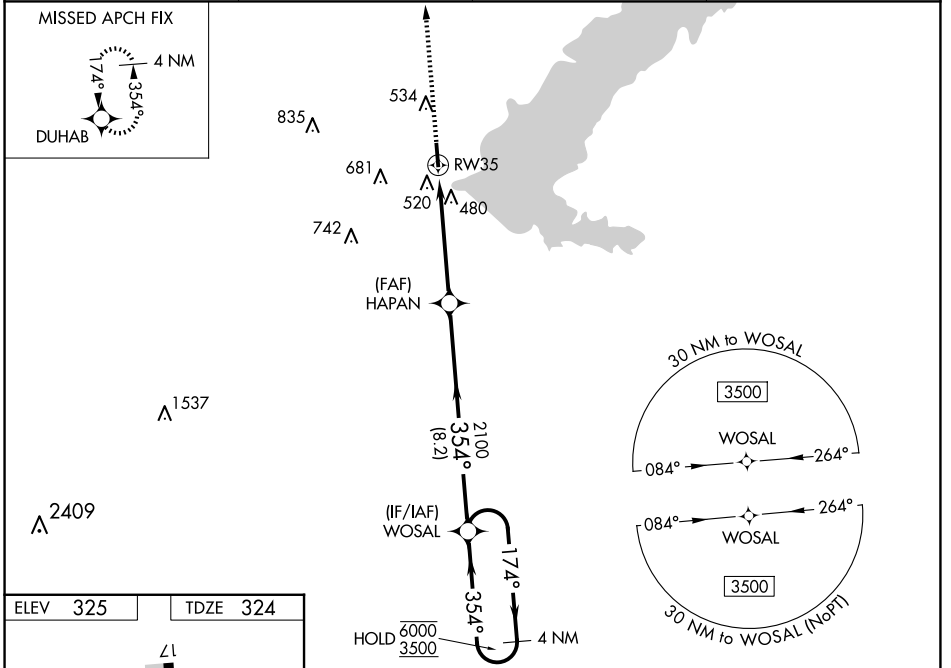
BRUCE CAMPBELL FLD (MBO)

RNP APCH - GPS.

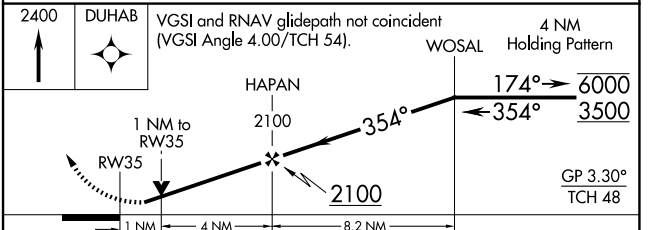
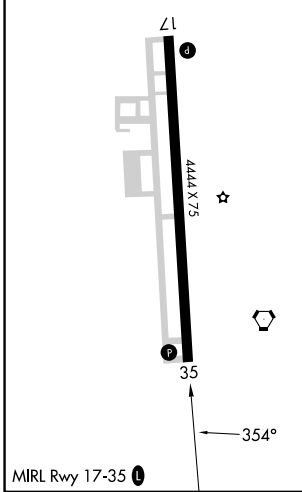
**⚠** Rwy 35 helicopter visibility reduction below 3/4 SM NA.  
For uncompensated Baro-VNAV systems, LNAV/VNAV NA below -15°C or above 54°C.

**⚠** MISSED APPROACH:  
Climb to 2400 direct DUHAB and hold.

AWOS-3PT <b>119.125</b>	JACKSON APP CON ★ <b>123.9 317.7</b>	CLNC DEL <b>125.9</b>	UNICOM <b>122.8 (CTAF) 0</b>
----------------------------	---	--------------------------	---------------------------------



ELEV 325	TDZE 324
----------	----------



CATEGORY	A	B	C	D
LPV DA	643-7/8 319 (400-7/8)			
LNAV/VNAV DA	760-1 1/4 436 (500-1 1/4)			
LNAV MDA	780-1	456 (500-1)	780-1 3/8	456 (500-1 3/8)
<b>C</b> CIRCLING	820-1 495 (500-1)	840-1 515 (600-1)	1040-2 715 (800-2)	1040-2 1/4 715 (800-2 1/4)

SC-4, 16 APR 2026 to 14 MAY 2026

SC-4, 16 APR 2026 to 14 MAY 2026