

VORTAC MHZ <b>113.2</b> Chan <b>79</b>	APP CRS <b>167°</b>	Rwy Idg TDZE Apt Elev	<b>4444</b> <b>325</b> <b>325</b>
--	------------------------	-----------------------------	---

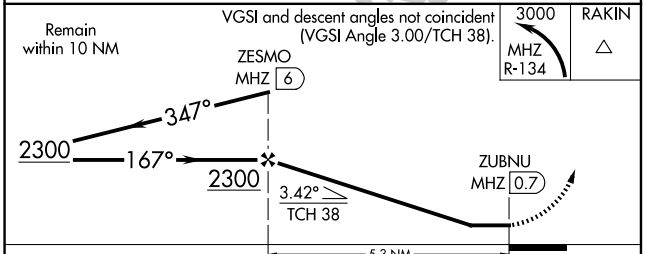
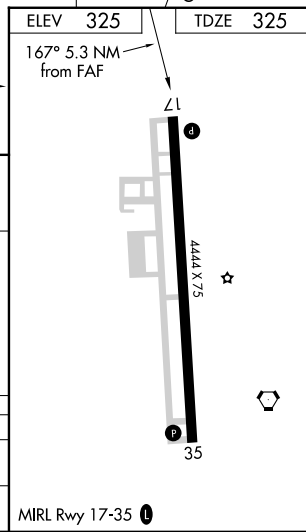
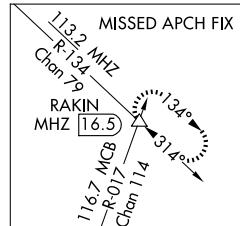
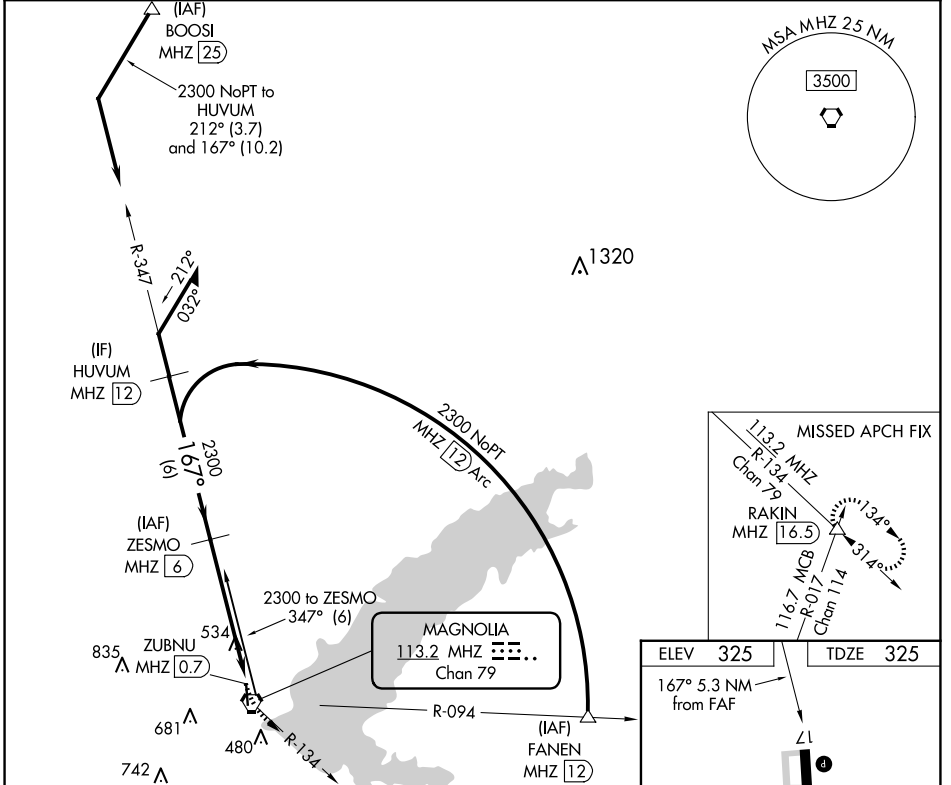
**VOR RWY 17**  
BRUCE CAMPBELL FLD (MBO)

DME required.

**▼** Rwy 17 helicopter visibility reduction below 1 SM NA. When local altimeter setting not received, use Jackson-Medgar Wiley Evers Intl altimeter setting and increase all MDA 40 feet, and Circling Cats C/D ¼ SM. Straight-in Rwy 17 NA at night, Circling Rwy 17 NA at night.

**MISSED APPROACH:** Climbing left turn to 3000 on MHZ VORTAC R-134 to RAKIN INT/MHZ 16.5 DME.

AWOS-3PT <b>119.125</b>	JACKSON APP CON ★ <b>123.9 317.7</b>	CLNC DEL <b>125.9</b>	UNICOM <b>122.8 (CTAF) 0</b>
----------------------------	---	--------------------------	---------------------------------



CATEGORY	A	B	C	D
S-17	800-1	475 (500-1)	800-1 3/8	475 (500-1 3/8)
<b>C</b> CIRCLING	820-1 495 (500-1)	840-1 515 (600-1)	1040-2 715 (800-2)	1040-2 1/4 715 (800-2 1/4)

SC-4, 16 APR 2026 to 14 MAY 2026

SC-4, 16 APR 2026 to 14 MAY 2026