

WAAS CH 56412 W17A	APP CRS 174°	Rwy Ldg TDZE 846 Apt Elev 846
--	------------------------	---

RNAV (GPS) RWY 17

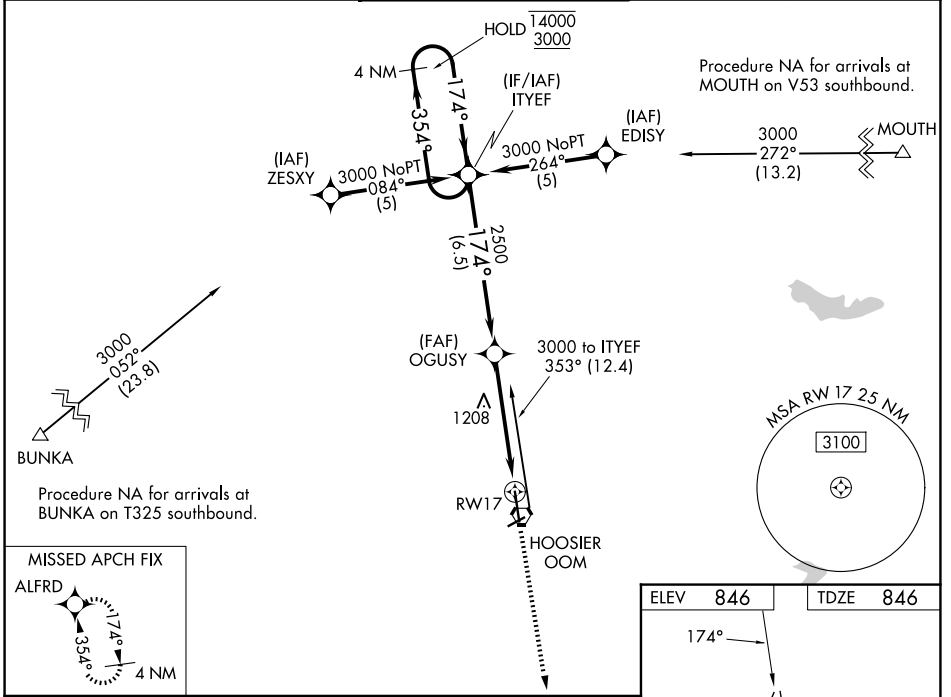
MONROE COUNTY (BMG)

RNP APCH - GPS.

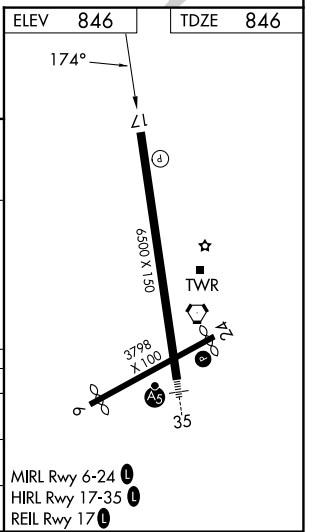
▼ Rwy 17 helicopter visibility reduction below 3/4 SM NA. For uncompensated Baro-VNAV systems, LNAV/VNAV NA below -16°C or above 54°C. Baro-VNAV and VDP NA when using HUF altimeter setting. When local altimeter setting not received, use HUF altimeter setting and increase LPV DA to 1355 feet and all visibilities 1/4 SM; increase LNAV/VNAV DA to 1530 feet and all visibilities 3/8 SM; increase all MDAs 140 feet and LNAV visibility Cats B/C/D 1/4 SM.

▲ MISSED APPROACH: Climb to 3000 direct ALFRD and hold.

ASOS 134.525	HULMAN APP CON 128.025 339.8	BLOOMINGTON TOWER * 120.775 (CTAF) ①	GND CON 121.9	UNICOM 122.95
------------------------	--	---	-------------------------	-------------------------



4 NM Holding Pattern		ITYEF	OGUSY	3000	ALFRD
14000	← 354°	174° →	2500	1.8 NM to RWY 17	
3000					
GP 3.04°		174°	2500		
TCH 40					
CATEGORY	A	B	C	D	
LPV DA		1230-1 1/8	384 (400-1 1/8)		
LNAV/VNAV DA		1405-1 5/8	559 (600-1 5/8)		
LNAV MDA	1460-1	614 (700-1)	1460-1 3/4	614 (700-1 3/4)	



EC-2, 16 APR 2026 to 14 MAY 2026

EC-2, 16 APR 2026 to 14 MAY 2026