

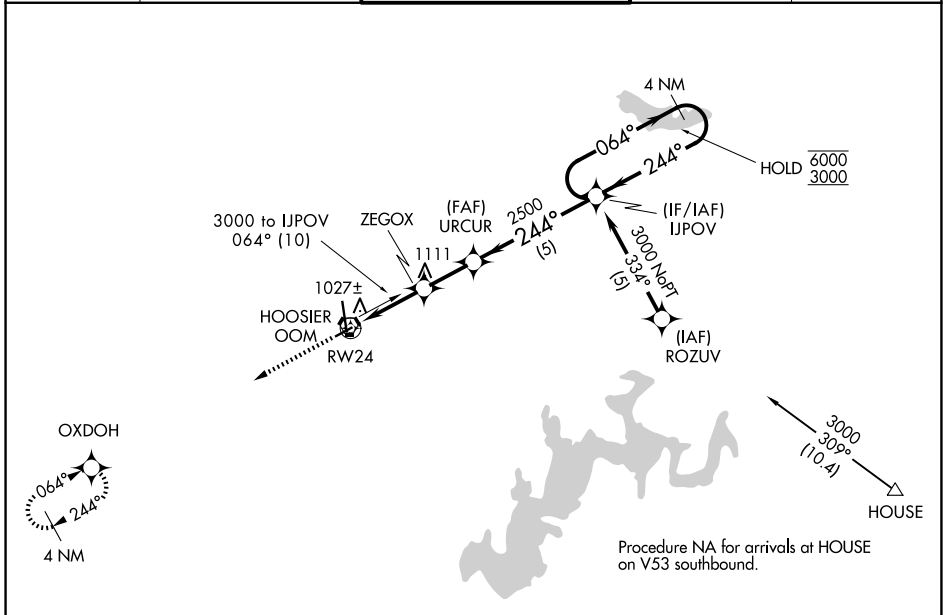
APP CRS	Rwy Ldg	<b>3576</b>
<b>244°</b>	TDZE	<b>841</b>
	Apt Elev	<b>846</b>

# RNAV (GPS) RWY 24

MONROE COUNTY (BMG)

RNP APCH - GPS.		MISSED APPROACH: Climb to 3000 on direct OXDOH and hold.		
<p>▼ Procedure NA at night. Rwy 24 helicopter visibility reduction below 1 SM NA.</p> <p>▲ When local altimeter setting not received, use HUF altimeter setting and increase all MDAs 140 feet and visibility Cats C and D 3/8 SM.</p>				

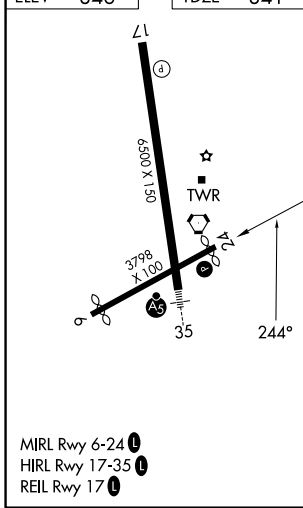
ASOS <b>134.525</b>	HULMAN APP CON <b>128.025 339.8</b>	BLOOMINGTON TOWER * <b>120.775 (CTAF) 0</b>	GND CON <b>121.9</b>	UNICOM <b>122.95</b>
------------------------	--	--	-------------------------	-------------------------



EC-2, 16 APR 2026 to 14 MAY 2026

EC-2, 16 APR 2026 to 14 MAY 2026

ELEV	<b>846</b>	TDZE	<b>841</b>
------	------------	------	------------



3000	OXDOH	VGSI and descent angles not coincident (VGSI Angle 4.00/TCH 37).		4 NM Holding Pattern
		ZEGOX	URUCUR	IJPOV
		≤ 3.06° TCH 31	2500	064° → 6000 ← 244° 3000
	RW24	1840		
		3 NM	2 NM	5 NM
CATEGORY	A	B	C	D
LNAV MDA	1320-1	479 (500-1)	1320-1 3/8	479 (500-1 3/8)