

WAAS CH 72812 W 35A	APP CRS 354°	Rwy Ldg TDZE Apt Elev	6500 844 846
---	------------------------	-----------------------------	---

RNAV (GPS) RWY 35

MONROE COUNTY (BMG)

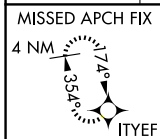
RNP APCH - GPS.

⚠ For uncompensated Baro-VNAV systems, LNAV/VNAV NA below -16°C or above 54°C.
⚠ Rwy 35 helicopter visibility reduction below 3/4 SM NA. Baro-VNAV and VDP NA when using HUF altimeter setting. Circling Rwy 6, 24 NA at night. For inop ALS, increase LPV all Cats visibility to 3/4 SM, LNAV Cats A/B visibility to 1 SM, and LNAV Cats C/D visibility to 1 3/4 SM. When local altimeter setting not received, use HUF altimeter setting: increase LPV DA to 1235 feet; increase LNAV/VNAV DA to 1485 feet and all visibilities 3/4 SM; increase all MDAs 140 feet and LNAV visibility Cats C and D 3/4 SM and Circling visibility Cats C and D 1/2 SM.

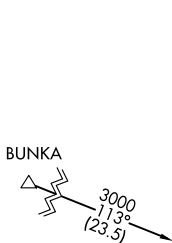


MISSED APPROACH:
Climb to 3000 direct
ITYEF and hold.

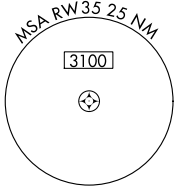
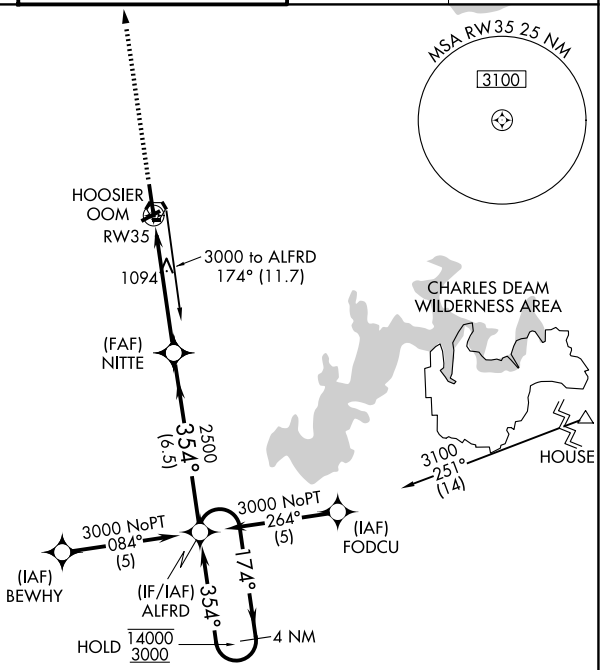
ASOS 134.525	HULMAN APP CON 128.025 339.8	BLOOMINGTON TOWER * 120.775 (CTAF) 0	GND CON 121.9	UNICOM 122.95
------------------------	--	---	-------------------------	-------------------------



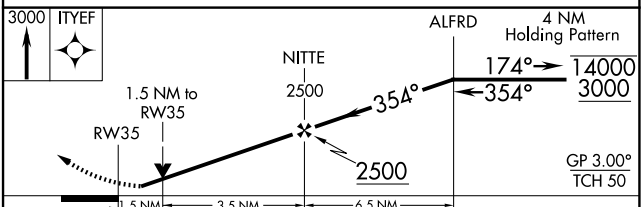
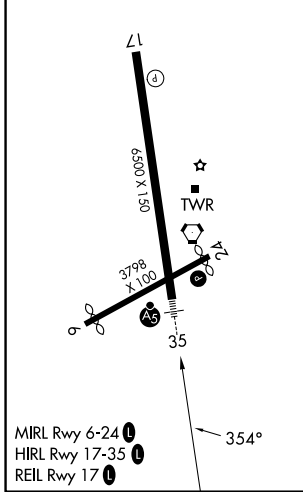
Procedure NA for arrival on OOM VORTAC
airway radial 207.



Procedure NA for arrivals at BUNKA
on V221 westbound and T325 northbound.



ELEV 846	TDZE 844
-----------------	-----------------



CATEGORY	A	B	C	D
LPV DA		1110-3/4	266 (300-3/4)	
LNAV/VNAV DA		1360-1	516 (600-1)	
LNAV MDA	1360-3/4	516 (600-3/4)	1360-1	516 (600-1)
CIRCLING	1380-1 534 (600-1)	1420-1 574 (600-1)	1420-1 1/2 574 (600-1 1/2)	1620-2 1/2 774 (800-2 1/2)

EC-2, 16 APR 2026 to 14 MAY 2026

EC-2, 16 APR 2026 to 14 MAY 2026