

WAAS CH <b>42719</b> <b>W06A</b>	APP CRS <b>065°</b>	Rwy Ldg TDZE Apt Elev	<b>3523</b> <b>301</b> <b>302</b>
--	------------------------	-----------------------------	---

# RNAV (GPS) RWY 6

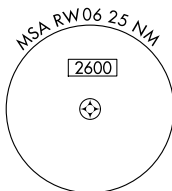
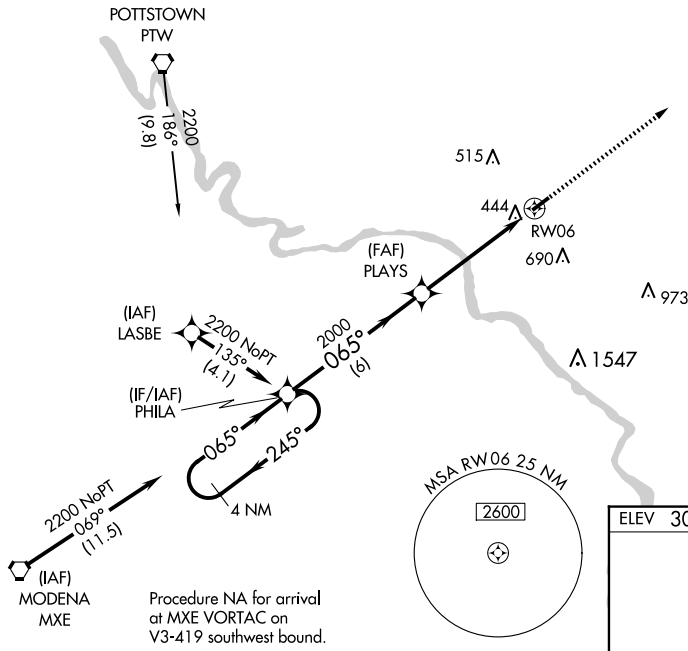
WINGS FLD (LOM)

RNP APCH.  
**▼** Baro-VNAV NA when using Pottstown altimeter setting. For uncompensated Baro-VNAV systems, LNAV/VNAV NA below -15°C (5°F) or above 54°C (130°F). When local altimeter setting not received, use Pottstown altimeter setting and increase all DA 35 feet and all MDA 40 feet; increase LPV Cats A/B visibility ½ mile. Rwy 6 helicopter visibility reduction below ¾ SM NA.

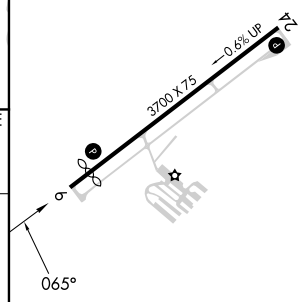
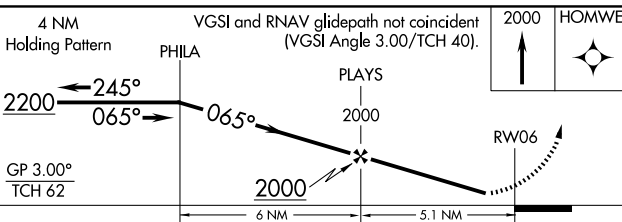
MISSED APPROACH: Climb to 2000 direct HOMWE and hold.

AWOS-3 <b>118.925</b>	PHILADELPHIA APP CON <b>126.85 263.125</b>	CLNC DEL <b>118.55</b>	UNICOM <b>123.0 (CTAF) ①</b>
--------------------------	---	---------------------------	---------------------------------

Procedure NA for arrival at PTW VORTAC on V403-405 northeast bound.



ELEV 302	TDZE 301
----------	----------



CATEGORY	A	B	C	D
LPV DA	614-1	313 (400-1)		NA
LNAV/VNAV DA	788-1¾	487 (500-1¾)		NA
LNAV MDA	720-1	419 (500-1)		NA
CIRCLING	780-1	478 (500-1)		NA

REIL Rwy 6 and 24 ①  
MIRL Rwy 6-24 ①

NE-4, 16 APR 2026 to 14 MAY 2026

NE-4, 16 APR 2026 to 14 MAY 2026