

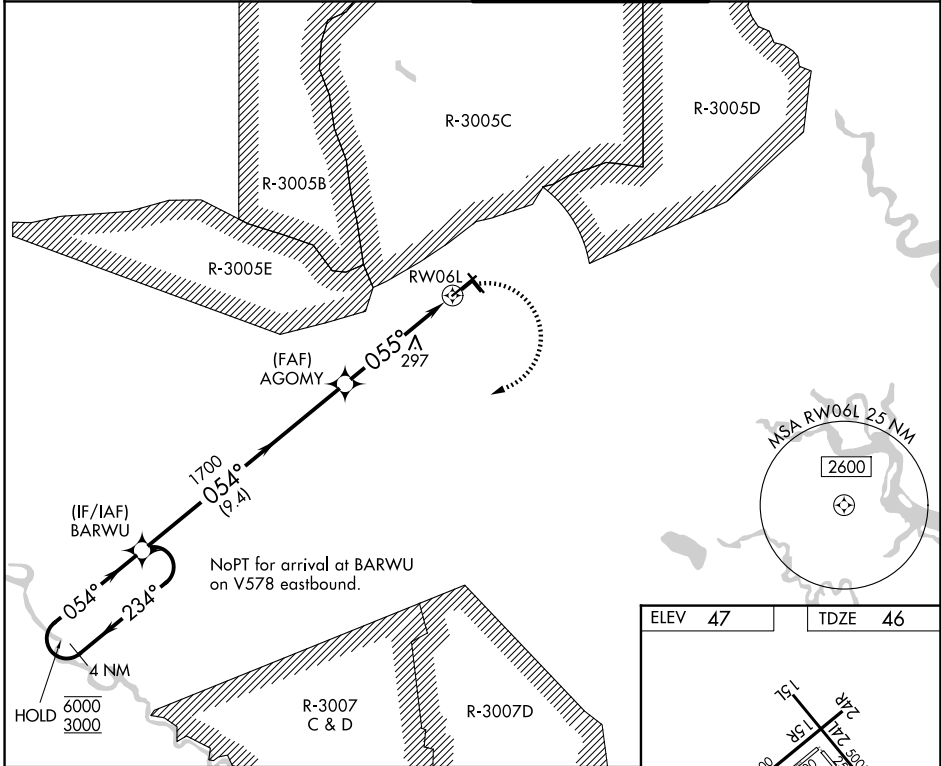
APP CRS	Rwy Ldg	6500
055°	TDZE	46
	Apt Elev	47

RNAV (GPS) RWY 6L

WRIGHT AAF (FORT STEWART)/MIDCOAST RGNL (LHW)

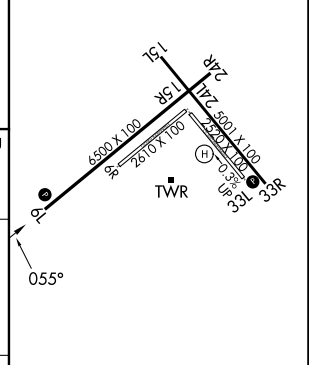
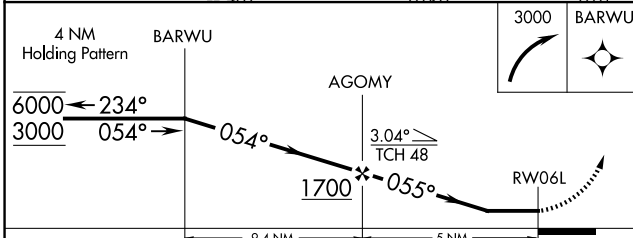
RNP APCH.	MISSED APPROACH: Climbing right turn to 3000 direct BARWU and hold.
RADAR required.	
<p>⚠ Circling NA northeast of Rwy 15L-33R. Rwy 6L helicopter visibility reduction below 1 SM NA. Procedure NA when R3005C/D or R3007C is active and LHW tower is closed. Straight-in/ Circling Rwy 6L NA at night and Circling Rwy 24R NA at night.</p>	

ATIS 118.475	SAVANNAH APP CON* 120.4 353.775	WRIGHT TOWER * 126.25 (CTAF) 0 269.275	GND CON 121.7 273.575
------------------------	---	--	---------------------------------



NoPT for arrival at BARWU on V578 eastbound.

ELEV 47	TDZE 46
---------	---------



CATEGORY	A	B	C	D
LNVA MDA	600-1	554 (600-1)	600-1½	554 (600-1½)
CIRCLING	600-1 553 (600-1)	620-1 573 (600-1)	680-1¾ 633 (700-1¾)	680-2 633 (700-2)

HIRL Rwy 6L-24R, 15L-33R

SE-4, 16 APR 2026 to 14 MAY 2026

SE-4, 16 APR 2026 to 14 MAY 2026