

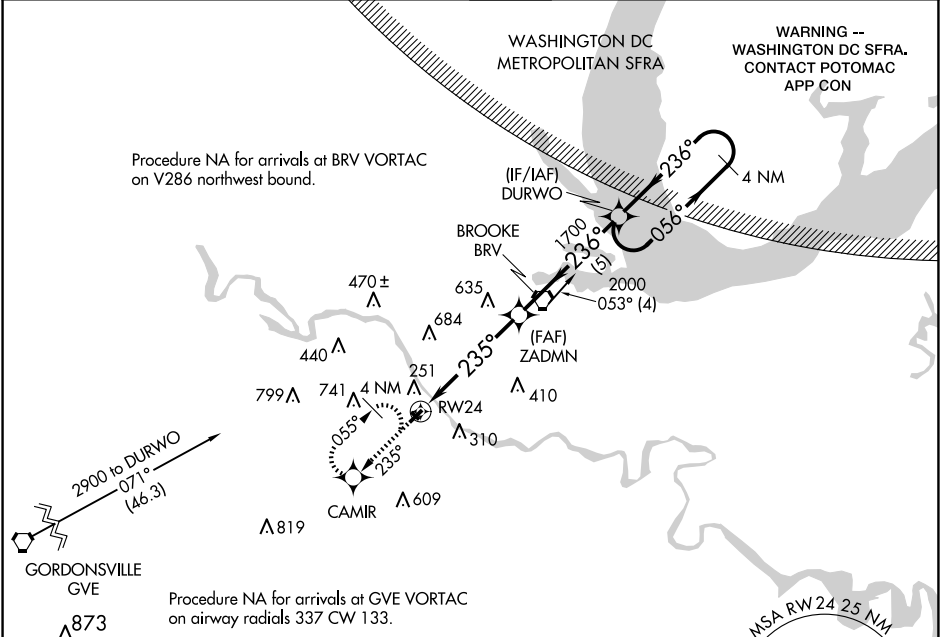
APP CRS	Rwy Ldg	<b>2822</b>
<b>235°</b>	TDZE	<b>85</b>
	Apt Elev	<b>85</b>

# RNAV (GPS) RWY 24

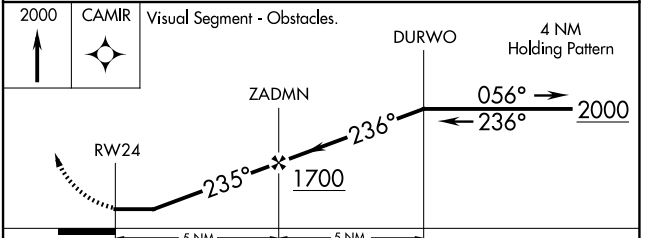
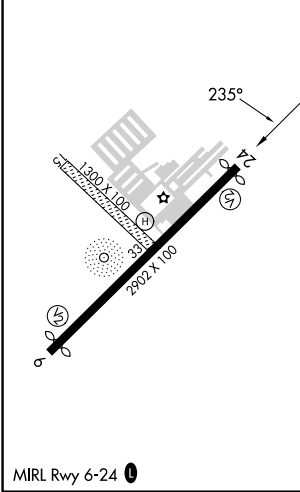
SHANNON (EZF)

RNP APCH.	<p><b>▼</b> Helicopter visibility reduction below 1 SM NA. When local altimeter setting not received use Stafford altimeter setting and increase all MDA 40 feet. Procedure NA at night. Circling NA to Rwy 15-33.</p> <p><b>▲</b></p>	MISSED APPROACH: Climb to 2000 direct CAMIR and hold.
-----------	--	---

AWOS-3 <b>128.125</b>	QUANTICO APP CON ★ <b>127.05 290.375</b>	GCO <b>135.075</b>	UNICOM <b>122.8 (CTAF) 0</b>
--------------------------	---	-----------------------	---------------------------------



ELEV	85	TDZE	85
------	----	------	----



CATEGORY	A	B	C	D
LNAV MDA	1100-3	1015 (1100-3)		NA
CIRCLING	1100-3	1015 (1100-3)		NA

NE-3, 16 APR 2026 to 14 MAY 2026

NE-3, 16 APR 2026 to 14 MAY 2026