

LOC/DME I-BJI <b>109.35</b> Chan 30 (Y)	APP CRS <b>253°</b>	Rwy Ldg TDZE Apt Elev	<b>5700</b> <b>1389</b> <b>1391</b>
---	------------------------	-----------------------------	---

# ILS or LOC RWY 25

BEMIDJI RGNL (BJI)

DME required. RADAR required for procedure entry.

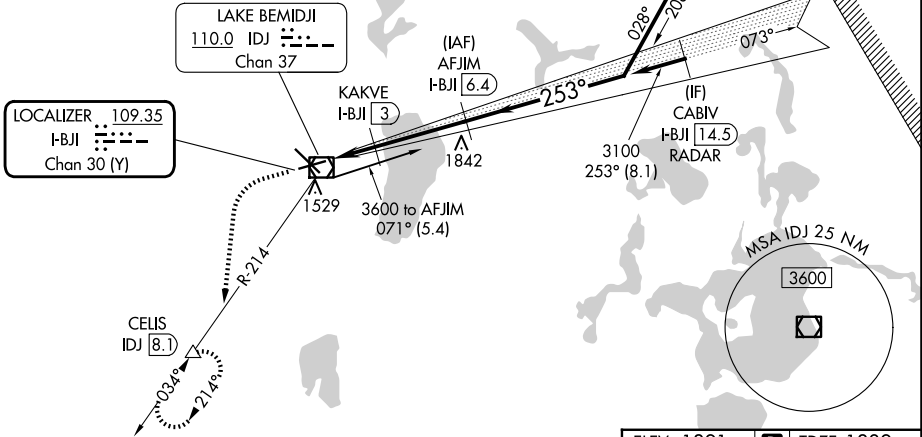
MISSED APPROACH: Climb to 3000 then climbing left turn to 3400 on heading 185° and IDJ VOR/DME R-214 to CELIS/IDJ VOR/DME 8.1 DME and hold, continue climb-in-hold to 3400.

▼  
▲ NA

AWOS-3  
**119.275**

MINNEAPOLIS CENTER  
**134.75 251.1**

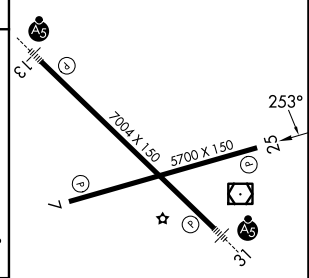
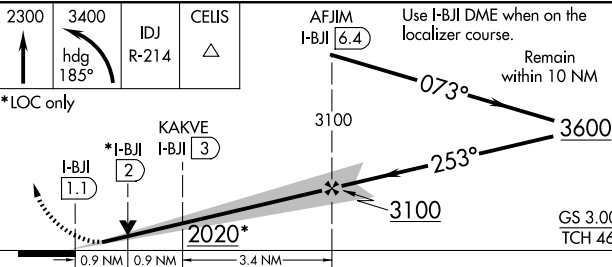
UNICOM  
**122.8 (CTAF) 0**



NC-1, 16 APR 2026 to 14 MAY 2026

NC-1, 16 APR 2026 to 14 MAY 2026

ELEV 1391 TDZE 1389



CATEGORY	A	B	C	D
S-ILS 25		1589-¾	200 (200-¾)	
S-LOC 25		1720-1	331 (400-1)	
CIRCLING	1840-1 449 (500-1)	1860-1 469 (500-1)	1860-1½ 469 (500-1½)	1960-2 569 (600-2)

HIRL Rwy 13-31 0  
MRL Rwy 7-25 0  
REIL Rws 7 and 25 0