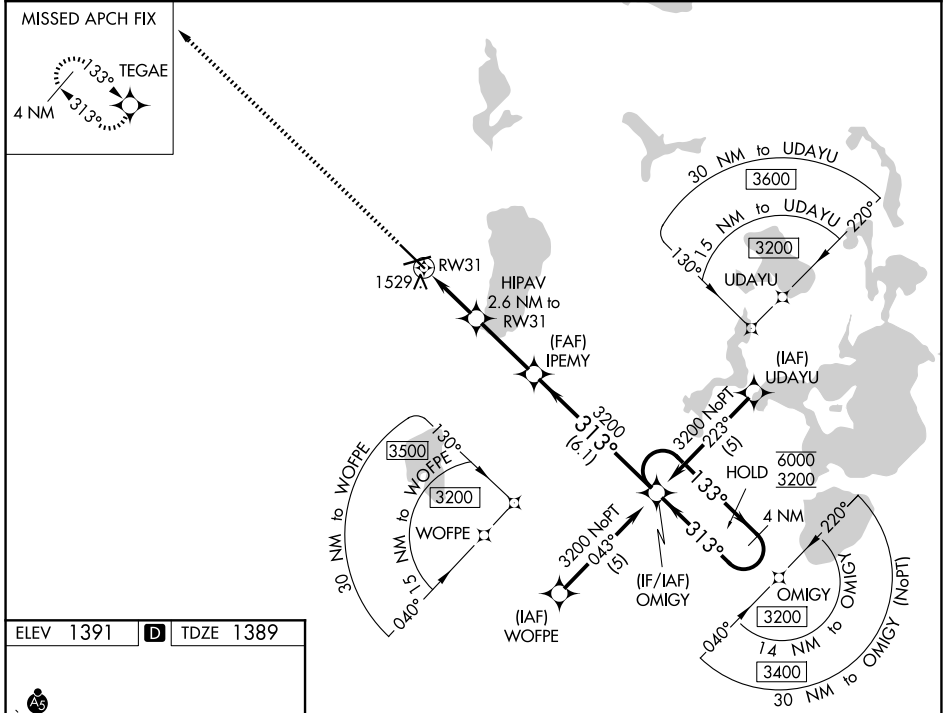


WAAS CH 99711 W31A	APP CRS 313°	Rwy Ldg TDZE Apt Elev	7002 1389 1391
--	------------------------	-----------------------------	---

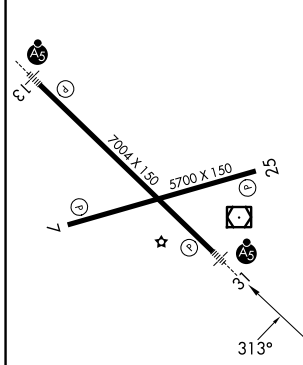
RNAV (GPS) RWY 31

BEMIDJI RGNL (BJI)

RNP APCH.		MALSR	MISSED APPROACH: Climb to 3200 direct TEGAE and hold.
<p>⚠ For uncompensated Baro-VNAV systems, LNAV/VNAV NA below -17°C or above 46°C. For inop ALS, increase LNAV/VNAV all Cats and LNAV Cats C/D visibility to 1¼ SM.</p>			
AWOS-3 119.275	MINNEAPOLIS CENTER 134.75 251.1	UNICOM 122.8 (CTAF)	



ELEV 1391		TDZE 1389
-----------	--	-----------



HIRL Rwy 13-31
MIRL Rwy 7-25
REIL Rwy 7 and 25

3200	TEGAE	HIPAV 2.6 NM to RW31	IPEMY 3200	OMIGY	4 NM Holding Pattern
*LNAV only.		*1.1 NM to RW31	313°	133°	6000
		2240*	3200	313°	3200
		1.1 NM	1.5 NM	2.9 NM	6.1 NM
CATEGORY	A	B	C	D	
LPV DA	1589-½		200 (200-½)		
LNAV/VNAV DA	1825-1		436 (500-1)		
LNAV MDA	1780-½	391 (400-½)	1780-5/8 391 (400-5/8)	1780-1 391 (400-1)	
CIRCLING	1840-1 449 (500-1)	1860-1 469 (500-1)	1860-1½ 469 (500-1½)	1960-2 569 (600-2)	

NC-1, 16 APR 2026 to 14 MAY 2026

NC-1, 16 APR 2026 to 14 MAY 2026