

VOR/DME IDJ 110.0 Chan 37	APP CRS 126°	Rwy Ldg TDZE 1391 Apt Elev 1391
---	------------------------	---

VOR/DME RWY 13

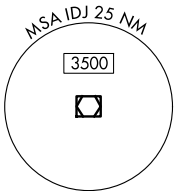
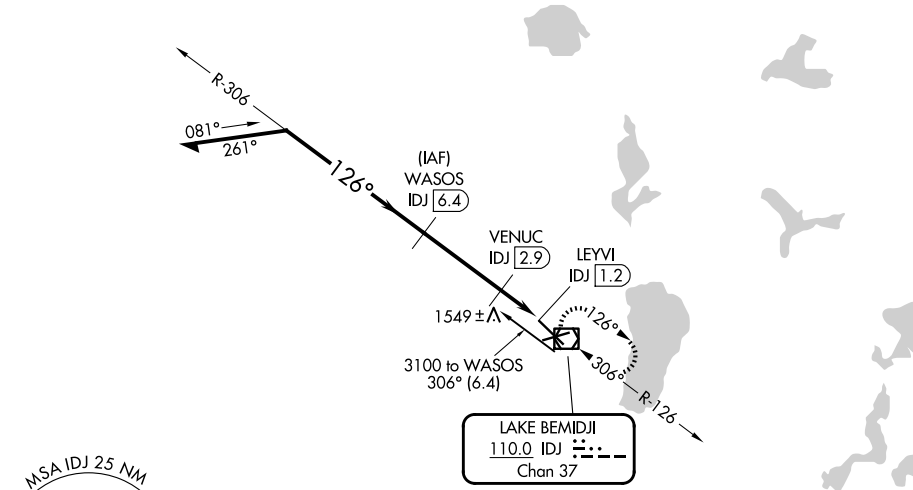
BEMIDJI RGNL (BJI)

NA When local altimeter setting not received, use Park Rapids altimeter setting and increase all MDA 100 feet, increase S-13 Cat C and D visibility 1/4 mile. VDP NA with Park Rapids altimeter setting. For inoperative MALSRS, increase S-13 Cat A and B visibility to 1 mile and Cat C and D visibility to 1 1/2 mile. For inoperative MALSRS when using Park Rapids altimeter setting, increase S-13 Cat A and B visibility to 1 mile and Cat C and D visibility to 1 3/8 mile. Helicopter visibility reduction below 3/4 SM not authorized.

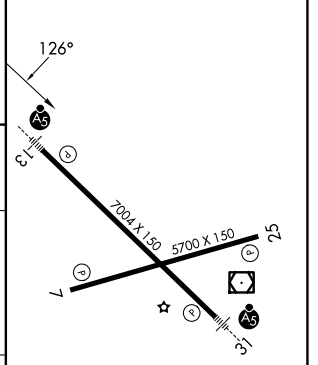
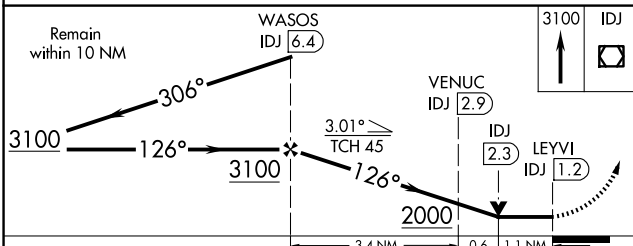
MALSRS
MISSED APPROACH:
Climb to 3100 direct IDJ VOR/DME and hold, continue climb-in-hold to 3100.

AWOS-3 119.275	MINNEAPOLIS CENTER 134.75 251.1	UNICOM 122.8 (CTAF)
--------------------------	---	-------------------------------

RADAR REQUIRED



ELEV 1391	D TDZE 1391
-----------	--------------------



CATEGORY	A	B	C	D
S-13	1800-3/4 409 (500-3/4)			
CIRCLING	1840-1 449 (500-1)	1860-1 469 (500-1)	1860-1 1/2 469 (500-1 1/2)	1960-2 569 (600-2)

HIRL Rwy 13-31
MRL Rwy 7-25
REIL Rwy 7 and 25

NC-1, 16 APR 2026 to 14 MAY 2026

NC-1, 16 APR 2026 to 14 MAY 2026