

| | | | |
|--|------------------------|---|-------------|
| WAAS CH 99739 W12A | APP CRS 124° | Rwy Idg TDZE 41 Apt Elev 42 | 3499 |
|--|------------------------|---|-------------|

RNAV (GPS) RWY 12

TAUNTON MUNI/KING FLD (TAN)

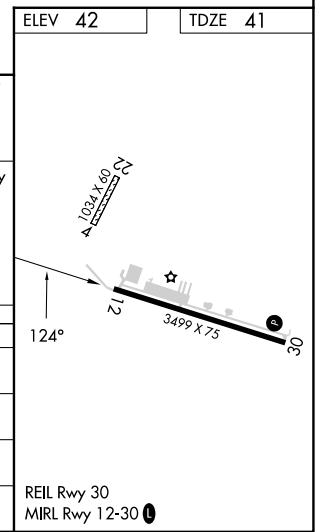
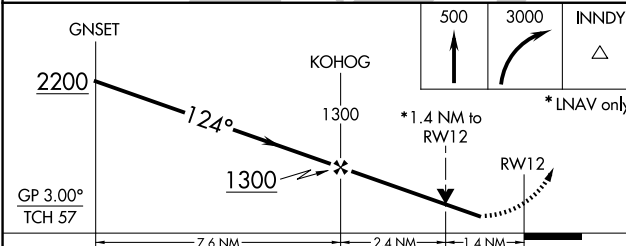
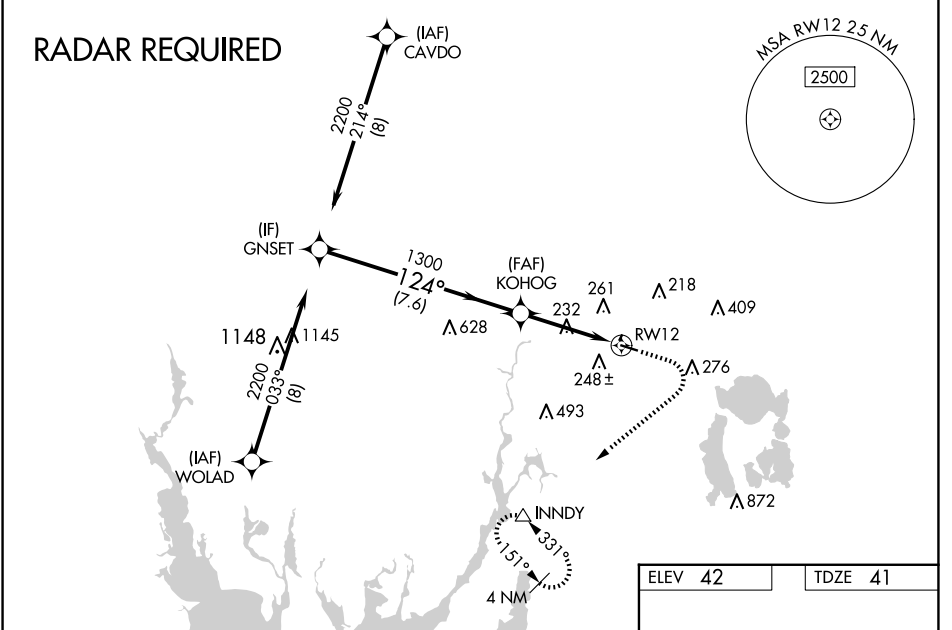
⚠ Circling NA to Rwy 4 and 22. For uncompensated Baro-VNAV systems, LNAV/VNAV NA below -3°C (27°F) or above 54°C (130°F). Baro-VNAV NA when using New Bedford altimeter setting. DME/DME RNP-0.3 NA. Rwy 12 helicopter visibility reduction below ¼ SM NA. When local altimeter setting not received, use New Bedford altimeter setting and increase LPV DA to 425 feet, LNAV/VNAV DA to 448 feet and all MDA 40 feet, increase LPV and LNAV/VNAV visibilities all Cats ½ SM, increase LNAV Cat C/D visibility ½ SM, and increase Circling Cat D visibility ¼ SM.

MISSED APPROACH: (Do not exceed 210K until INNDY) Climb to 500 then climbing right turn to 3000 direct INNDY and hold, continue climb in hold to 3000.

ASOS
132.675

PROVIDENCE APP CON*
128.7 269.525

UNICOM
122.7 (CTAF) 0



| CATEGORY | A | B | C | D |
|-------------------|----------------------|----------------------|------------------------------|------------------------------|
| LPV DA | | 391-1 1/8 | 350 (400-1 1/8) | |
| LNAV/VNAV DA | | 414-1 1/4 | 373 (400-1 1/4) | |
| LNAV MDA | 540-1 | 499 (500-1) | 540-1 3/8 | 499 (500-1 3/8) |
| C CIRCLING | 560-1 518 (600-1) | 580-1 538 (600-1) | 660-1 3/4 618 (700-1 3/4) | 760-2 1/4 718 (800-2 1/4) |

NE-1, 16 APR 2026 to 14 MAY 2026

NE-1, 16 APR 2026 to 14 MAY 2026