

GATEWAY ONE DEPARTURE
(GATWY1.TWILA) 08NOV18

ATIS
128.0
CLNC DEL
120.2 (when tower closed)
GND CON
120.2
REGIONAL TOWER ★
126.0 239.0
ST LOUIS DEP CON
124.2 353.9

TOP ALTITUDE:
ASSIGNED BY ATC

TAKEOFF MINIMUMS
Rwys 11, 17, 29, 35: Standard.

ST. LOUIS
117.4 STL :::::
Chan 121

BIBLE GROVE
109.0 BIB :::::
Chan 27

TERRE HAUTE
115.3 TTH :::::
Chan 100

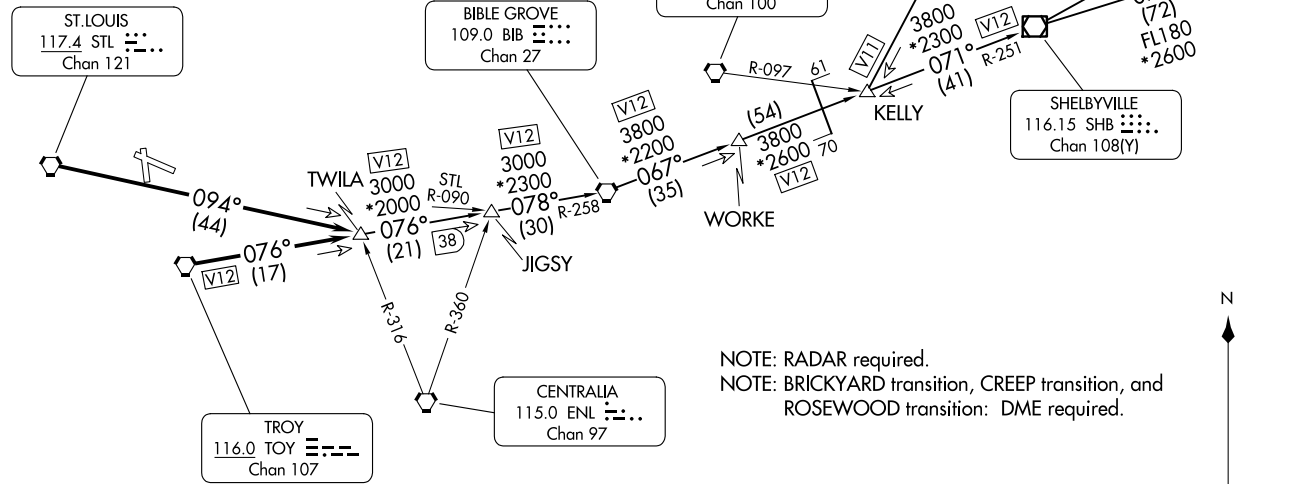
BRICKYARD
116.3 VHP :::::
Chan 110

ROSEWOOD
117.5 ROD :::::
Chan 122

SHELBYVILLE
116.15 SHB :::::
Chan 108(Y)

CENTRALIA
115.0 ENL :::::
Chan 97

TROY
116.0 TOY :::::
Chan 107



NOTE: RADAR required.
NOTE: BRICKYARD transition, CREEP transition, and ROSEWOOD transition: DME required.



(CONTINUED ON FOLLOWING PAGE)

NOTE: Chart not to scale.

(GATWY1.TWILA) 24025
GATEWAY ONE DEPARTURE

AL-5178 (FAA)

ST LOUIS RGNL (ALN)
ALTON/ST. LOUIS, ILLINOIS

ALTON/ST. LOUIS, ILLINOIS
ST LOUIS RGNL (ALN)



DEPARTURE ROUTE DESCRIPTION

Climb on assigned heading for vector to appropriate route, maintain 2500 or assigned altitude, thence. . . .

. . . .from over TOY VORTAC on TOY R-076 or over STL VORTAC on STL R-094 to TWILA INT. Then on (transition), expect clearance to filed altitude 10 minutes after departure.

BIBLE GROVE TRANSITION (GATWY1.BIB): From over TWILA on TOY R-076 to JIGSY, then on BIB R-258 to BIB VORTAC.

BRICKYARD TRANSITION (GATWY1.VHP): From over TWILA on TOY R-076 to JIGSY, then on BIB R-258 to BIB VORTAC, then on BIB R-067 to WORKE, then on BIB R-067 and SHB R-251 to KELLY, then on VHP R-209 to VHP VORTAC.

CREEP TRANSITION (GATWY1.CREEP): From over TWILA on TOY R-076 to JIGSY, then on BIB R-258 to BIB VORTAC, then on BIB R-067 to WORKE, then on BIB R-067 and SHB R-251 to KELLY, then on SHB R-251 to SHB VOR/DME, then on SHB R-075 to CREEP.

JIGSY TRANSITION (GATWY1.JIGSY): From over TWILA on TOY R-076 to JIGSY.

ROSEWOOD TRANSITION (GATWY1.ROD): From over TWILA on TOY R-076 to JIGSY, then on BIB R-258 to BIB VORTAC, then on BIB R-067 to WORKE, then on BIB R-067 and SHB R-251 to KELLY, then on SHB R-251 to SHB VOR/DME, then on SHB R-063 and ROD R-250 to ROD VORTAC.

EC-3, 16 APR 2026 to 14 MAY 2026

EC-3, 16 APR 2026 to 14 MAY 2026