

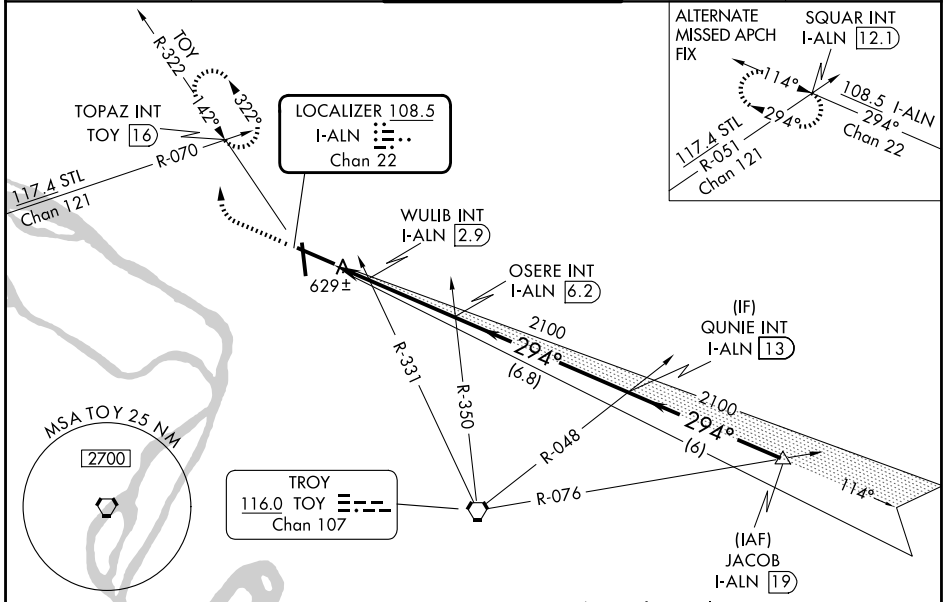
LOC/DME I-ALN 108.5 Chan 22	APP CRS 294°	Rwy Ldg TDZE Apt Elev	8099 531 544
--	------------------------	-----------------------------	---

ILS or LOC RWY 29

ST LOUIS RGNL (ALN)

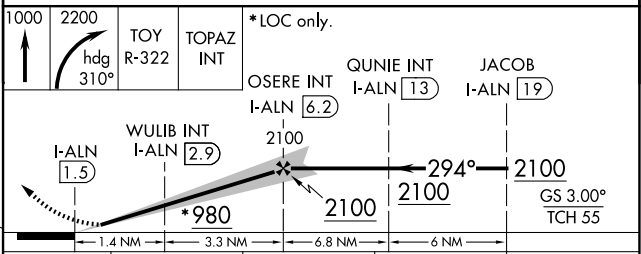
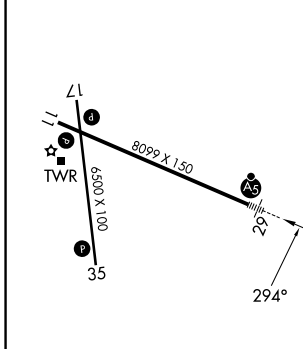
<p>For inop ALS, increase WULIB fix minimums S-LOC 29 Cats C/D visibility to 1 SM.</p>	<p>MALS R</p>	<p>MISSED APPROACH: Climb to 1000 then climbing right turn to 2200 on heading 310° and on TOY VORTAC R-322 to TOPAZ INT/TOY 16 DME and hold.</p>

ATIS 128.0	ST LOUIS APP CON 124.2 353.9	REGIONAL TOWER* 126.0 (CTAF) 239.0	GND CON 120.2	UNICOM 122.95
----------------------	--	--	-------------------------	-------------------------



ELEV 544	D	TDZE 531
----------	----------	----------

Procedure NA for arrivals at JACOB on V12 northeast bound.



REIL Rwy 11	HIRL Rwy 11-29	MIRL Rwy 17-35			
FAF to MAP 4.8 NM					
Knots	60	90	120	150	180
Min:Sec	4:48	3:12	2:24	1:55	1:36

CATEGORY	A	B	C	D
S-ILS 29	731-1/2 200 (200-1/2)			
S-LOC 29	980-1/2	449 (500-1/2)	980-7/8	449 (500-7/8)
CIRCLING	1000-1	456 (500-1)	1160-13/4	1200-2
			616 (700-13/4)	656 (700-2)
WULIB FIX MINIMUMS (DUAL VOR RECEIVERS OR DME REQUIRED)				
S-LOC 29	880-1/2	349 (400-1/2)	880-5/8	349 (400-5/8)
CIRCLING	1000-1	456 (500-1)	1160-13/4	1200-2
			616 (700-13/4)	656 (700-2)

EC-3, 16 APR 2026 to 14 MAY 2026

EC-3, 16 APR 2026 to 14 MAY 2026