

WAAS CH 61125 W11A	APP CRS 114°	Rwy Ldg TDZE Apt Elev	4460 96 103
--	------------------------	-----------------------------	--

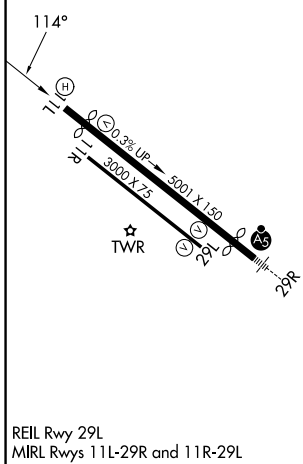
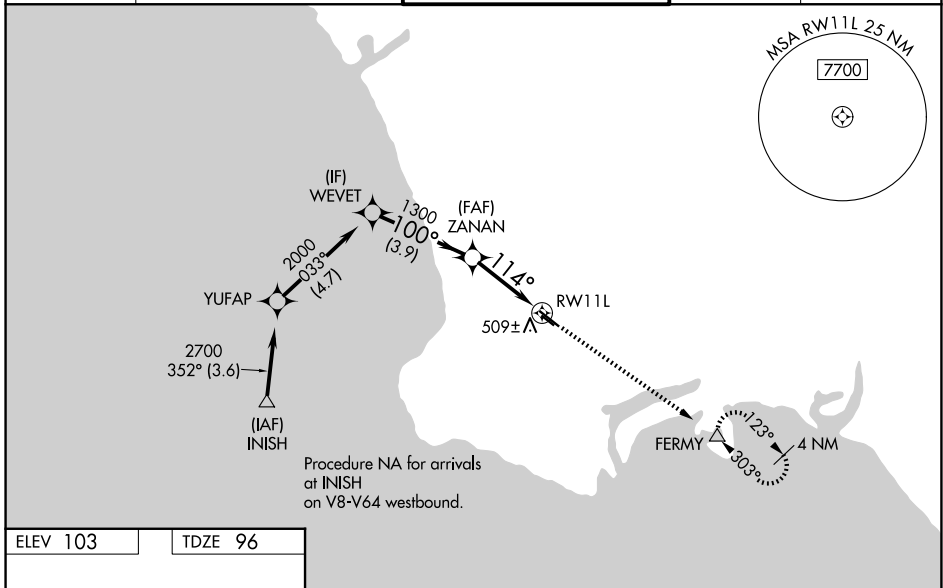
RNAV (GPS) RWY 11L

ZAMPERINI FLD (TOA)

⚠ For uncompensated Baro-VNAV systems, LNAV/VNAV NA below 3°C (38°F) or above 54°C (130°F). Circling NA southwest of Rwy 11R-29L. Baro-VNAV and VDP NA when using Los Angeles Intl altimeter setting. DME/DME RNP-0.3 NA. When local altimeter setting not received, except for operators with approved weather reporting service, use Los Angeles Intl altimeter setting: increase LPV DA to 390 feet and LNAV/VNAV DA to 714 feet and all MDA 40 feet; increase LNAV/VNAV all Cats visibility, LNAV Cat C visibility and Circling Cat C visibility 1/8 SM. Rwy 11L helicopter visibility reduction below 3/4 SM NA.

MISSED APPROACH: Climb to 2700 direct FERMV and hold, continue climb-in-hold to 2700.

ATIS 125.6	SOCAL APP CON 124.3 363.2 (11L, 11R) 127.2 269.6 (29L, 29R)	TORRANCE TOWER* 133.075 257.8 (N) 124.0 (CTAF) 0 257.8 (S)	GND CON 120.9	UNICOM 122.95
----------------------	---	---	-------------------------	-------------------------



VGSI and RNAV glidepath not coincident (VGSI Angle 3.50/TCH 10).

	WEVET	ZANAN		FERMV
	2000	1300		2700
	100°	114°		
	3.9 NM	1.7 NM	1.5 NM	
	GP 3.43°			
	TCH 59			
	*1.5 NM to RWY 11L			
	*LNAV only.			
CATEGORY	A	B	C	D
LPV DA	366-7/8 270 (300-7/8)			NA
LNAV/VNAV DA	690-13/4 594 (600-13/4)			NA
LNAV MDA	640-1	544 (600-1)	640-15/8 544 (600-15/8)	NA
CIRCLING	640-1 537 (600-1)	680-1 577 (600-1)	680-15/8 577 (600-15/8)	NA

SW-3, 16 APR 2026 to 14 MAY 2026

SW-3, 16 APR 2026 to 14 MAY 2026