

WAAS CH 56425 W29A	APP CRS 294°	Rwy Ldg TDZE Apt Elev	4461 97 103
--	------------------------	-----------------------------	--

RNAV (GPS) RWY 29R

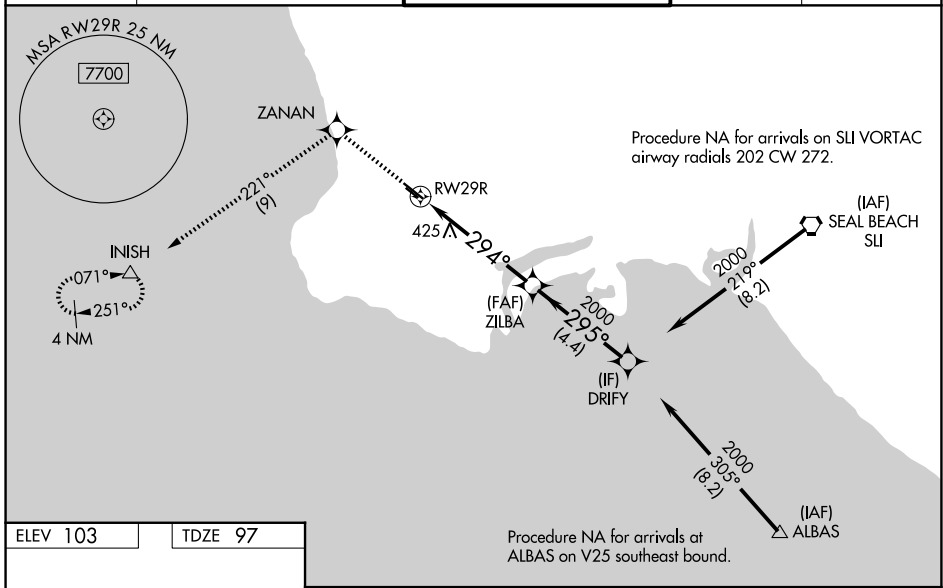
ZAMPERINI FLD (TOA)

▼ For uncompensated Baro-VNAV systems, LNAV/VNAV NA below 3°C (38°F) or above 54°C (130°F). Circling NA southwest of Rwy 11R-29L. DME/DME RNP-0.3 NA.
▲ For inop ALS, increase LPV all Cats visibility to 7/8 SM. For inop ALS when using Los Angeles Infil altimeter setting, increase LPV all Cats visibility to 5/8 SM, LNAV/VNAV all Cats visibility to 2 SM, and LNAV Cat C visibility to 1 3/4 SM. Baro-VNAV and VDP NA when using Los Angeles Infil altimeter setting. When local altimeter setting not received, except for operators with approved weather reporting service, use Los Angeles Infil setting: increase LPV DA to 391 feet and LNAV/VNAV DA to 763 feet and all MDA 40 feet; increase LNAV/VNAV all Cats visibility and LNAV Cat C visibility 1/8 SM.

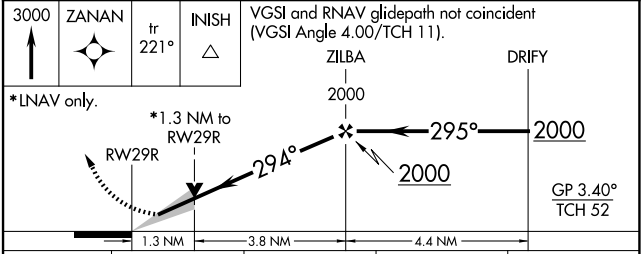
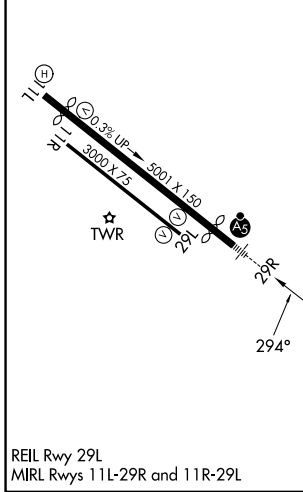
MALSRL

MISSED APPROACH: (Do not exceed 185 KIAS until ZANAN) Climb to 3000 direct ZANAN and on track 221° to INISH and hold, continue climb-in-hold to 3000.

ATIS 125.6	SOCAL APP CON 124.3 363.2 (11L, 11R) 127.2 269.6 (29L, 29R)	TORRANCE TOWER* 133.075 257.8 (N) 124.0 (CTAF) 0 257.8 (S)	GND CON 120.9	UNICOM 122.95
----------------------	---	---	-------------------------	-------------------------



ELEV 103	TDZE 97
----------	---------



CATEGORY	A	B	C	D
LPV DA	367-1/2		270 (300-1/2)	NA
LNAV/VNAV DA	739-1 1/2		642 (700-1 1/2)	NA
LNAV MDA	680-1/2	583 (600-1/2)	680-1 1/4 583 (600-1 1/4)	NA
CIRCLING	680-1	577 (600-1)	680-1 3/4 577 (600-1 3/4)	NA

SW-3, 16 APR 2026 to 14 MAY 2026

SW-3, 16 APR 2026 to 14 MAY 2026