

WAAS CH 82537 W24A	APP CRS 243°	Rwy Ldg 5799 TDZE 719 Apt Elev 722
--	------------------------	--

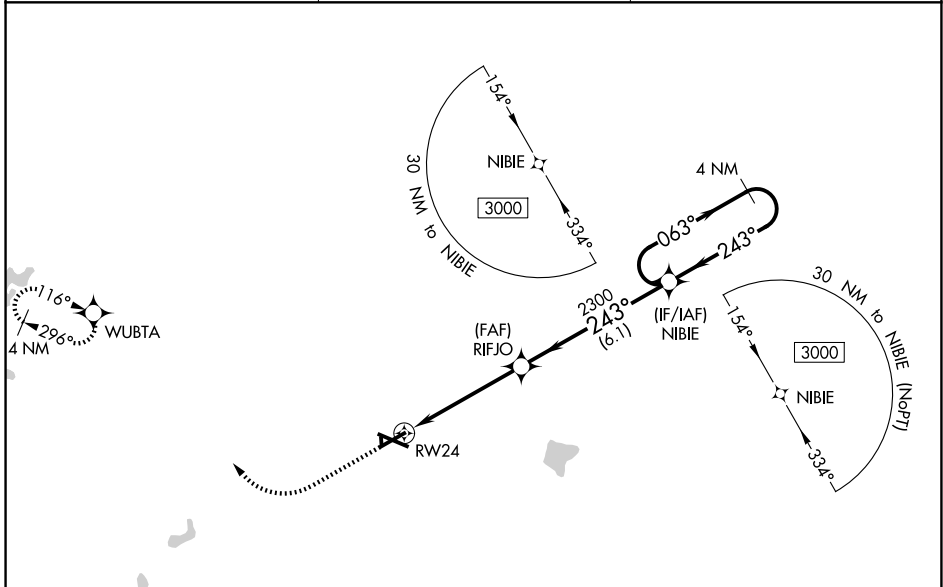
RNAV (GPS) RWY 24

COLES COUNTY MEML (MTO)

⚠ DME/DME RNP-0.3 NA. When local altimeter setting not received, use Champaign/Urbana altimeter setting and increase all DA 82 feet, increase all MDA 100 feet, increase LPV all Cats visibility $\frac{1}{8}$ mile, LNAV/VNAV all Cats, LNAV Cats C/D and Circling Cat D visibility $\frac{1}{4}$ mile. Baro-VNAV and VDP NA when using Champaign/Urbana altimeter setting. For uncompensated Baro-VNAV systems, LNAV/VNAV NA below -19°C (-2°F) or above 54°C (130°F). Circling NA to Rwy's 18 and 36.

MISSED APPROACH: Climb to 1200 then climbing right turn to 3000 direct WUBTA and hold.

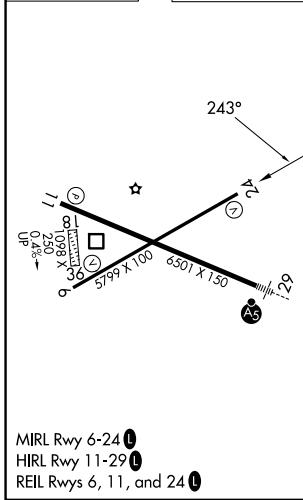
ASOS 118.475	CHAMPAIGN APP CON* 132.85 290.225	UNICOM 122.7 (CTAF)
------------------------	---	-------------------------------



EC-3, 16 APR 2026 to 14 MAY 2026

EC-3, 16 APR 2026 to 14 MAY 2026

ELEV 722	D	TDZE 719
----------	----------	----------



	1200	3000	WUBTA	
	↑	↷	✧	
	* LNAV only.		RIFJO	NIBIE
	*1.1 NM to RW24		2300	4 NM Holding Pattern
	RW24		2430	3000
	1.1 NM		3.7 NM	6.1 NM
	2300		2430	3000
	063°		243°	GP 3.00°
				TCH 46
CATEGORY	A	B	C	D
LPV DA	969- $\frac{7}{8}$		250 (300- $\frac{7}{8}$)	
LNAV/VNAV DA	1017-1		298 (300-1)	
LNAV MDA	1120-1	408 (500-1)	1120-1 $\frac{1}{8}$	408 (500-1 $\frac{1}{8}$)
CIRCLING	1160-1 438 (500-1)	1180-1 458 (500-1)	1240-1 $\frac{1}{2}$ 518 (600-1 $\frac{1}{2}$)	1380-2 658 (700-2)