

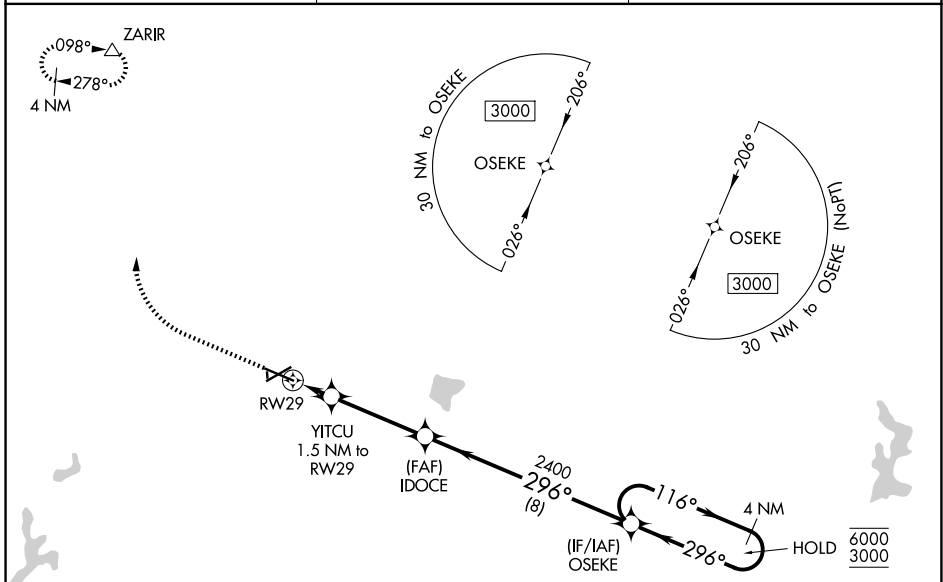
WAAS CH 93510 W29A	APP CRS 296°	Rwy Ldg TDZE Apt Elev	6501 718 722
--	------------------------	-----------------------------	---

RNAV (GPS) RWY 29

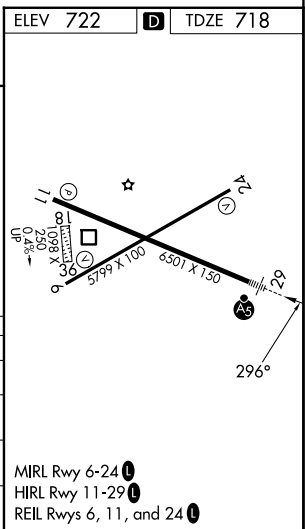
COLES COUNTY MEML (MTO)

RNP APCH.	MALSR	MISSED APPROACH: Climb to 2000 then climbing right turn to 3000 direct ZARIR and hold.
<p>⚠ Circling NA to Rwy 18 and 36. For uncompensated Baro-VNAV systems, LNAV/VNAV NA below -19°C or above 54°C. For inop ALS, increase LNAV/VNAV all Cats visibility to 7/8 SM and increase LNAV Cat C/D visibility to 1 SM.</p>		

ASOS 118.475	CHAMPAIGN APP CON ★ 132.85 290.225	UNICOM 122.7 (CTAF) ①
------------------------	--	---------------------------------



ELEV 722	D	TDZE 718	
2000	3000	ZARIR	4 NM Holding Pattern
* LNAV only.	YITCU 1.5 NM to RWY 29	IDOCE 2400	OSEKE
RWY 29	* 1 NM to RWY 29	* 1240	2400
1 NM	0.5	3.6 NM	8 NM
CATEGORY	A	B	C
LPV DA		918-1/2	200 (200-1/2)
LNAV/VNAV DA		1014-1/2	296 (300-1/2)
LNAV MDA	1080-1/2	362 (400-1/2)	1080-5/8 362 (400-5/8)
CIRCLING	1160-1 438 (500-1)	1180-1 458 (500-1)	1240-1 1/2 518 (600-1 1/2) 1380-2 658 (700-2)



MIRL Rwy 6-24 ①
HIRL Rwy 11-29 ①
REIL Rws 6, 11, and 24 ①

EC-3, 16 APR 2026 to 14 MAY 2026

EC-3, 16 APR 2026 to 14 MAY 2026